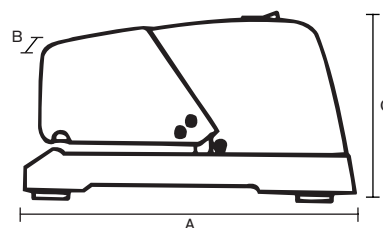


## Stapling productivity



### Rapid 100 Electric

<b>Stapling performance:</b>	Up to 50 sheets (80gsm)
<b>Magazine capacity:</b>	210 staples Rapid 66/6-8+ or 150 staples Rapid 44/6-8+
<b>Stapling depth:</b>	Adjustable up to 85mm
<b>Weight:</b>	3600g
<b>Optional extra:</b>	Pedal
<b>Voltage/frequency:</b>	100V/50-60Hz, 115V/50-60Hz, 220V/50Hz, 230V/50Hz, 240V/50Hz
<b>Dimensions:</b>	A: Length 270mm B: Width 130mm C: Height 150mm



### Your benefits

- **Functional** – suitable for offices (mail room, copying room) and industry.
- **Quality** – sturdy design for long service life (replaceable stapling head).
- **Flexible** – variable impact force and adjustable stapling depth.
- **Safe to use** – will not staple when stapling head guard is lifted.
- **Stable** – rests firmly on four rubber feet.
- **User-friendly** – simple front-loading magazine. Can be pedal-operated (pedal, optional extra).



A professional stapler suitable for large offices or industry.



The R100E can staple up to 50 sheets at a time. A reliable stapler for frequent and large-volume stapling.

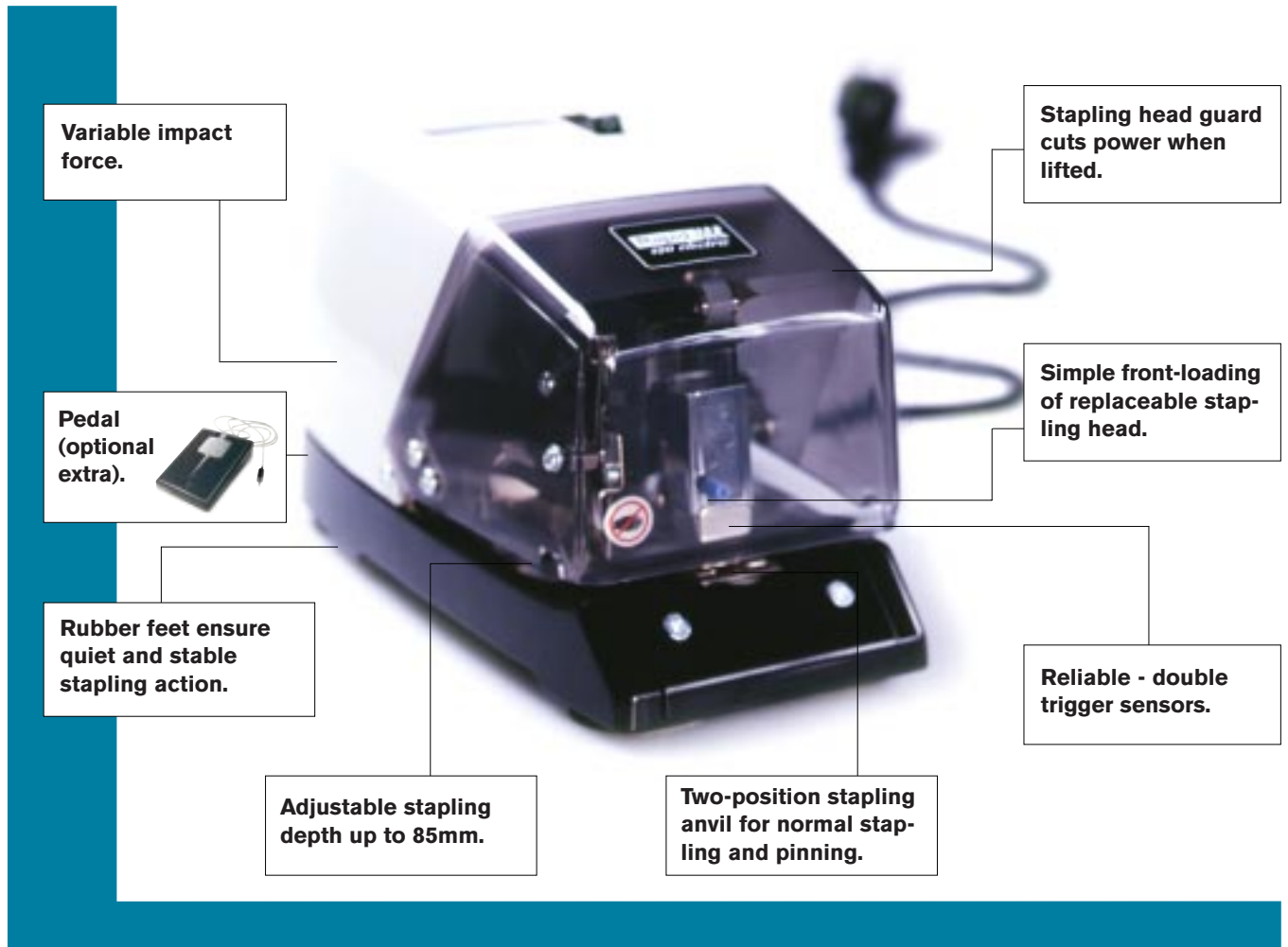


The durability of the robust R100E has made it a very popular stapler in the packaging industry.



The two-year guarantee covers material and production defects, provided the right staple is used, Rapid original staples.

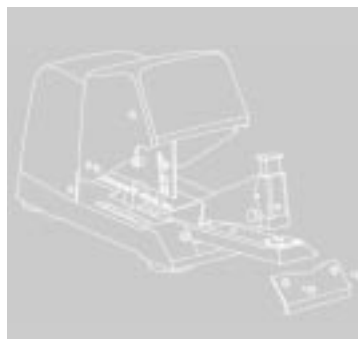
# R100 Electric



## Profitable efficiency

**ARE YOU FED UP WITH ELECTRIC STAPLERS THAT GO HAYWIRE? ARE YOU LOOKING FOR PEACE OF MIND AT WORK AND VALUE FOR MONEY?**

The R100E is the perfect choice for large-volume stapling, wherever productivity is valued. The R100E is a reliable classic with a sturdy design. It can staple 50 sheets together without any trouble and it has variable impact force. And like all other Rapid staplers, it is quality controlled to give you superior, long-lasting performance.

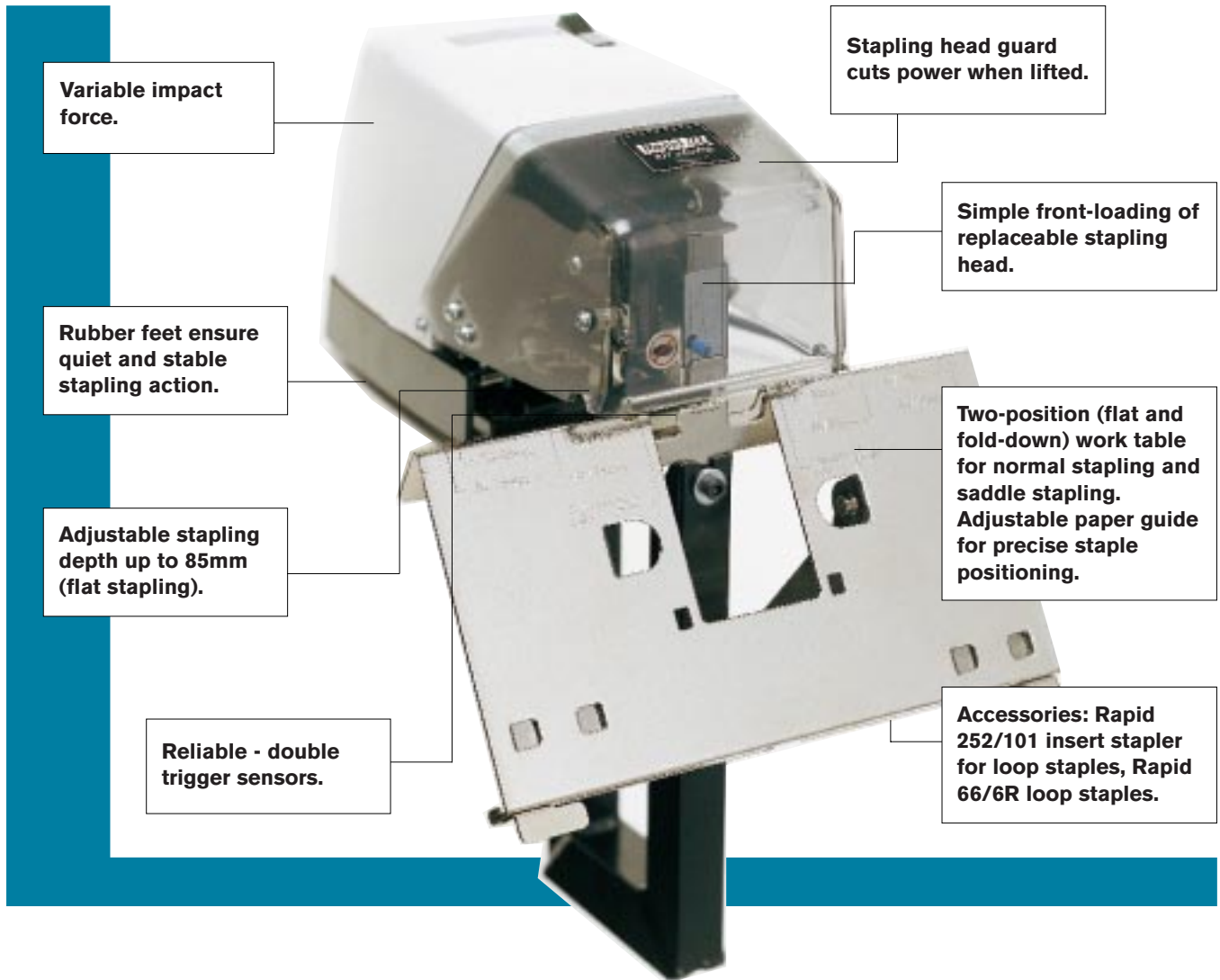


**Easy to replace stapling head. Spare parts available.**



**Simple front-loading. Safe to use – will not staple when the stapling head guard is up.**

# R101 Electric



## Two staplers in one

**RAPID HAS THE WIDEST AND BEST RANGE OF ELECTRIC STAPLERS ON THE MARKET. ALL OUR ELECTRIC STAPLERS MEET THE HUMAN REQUIREMENTS OF PROFESSIONAL USERS.**

The R101E is two staplers in one: It can staple brochures or folders, with the work table folded down, as speedily and easily as it staples loose sheets or stacks of paper in the flat position. A stapling head for loop staples is available as an optional extra.



**Easy to switch stapling heads. For loop stapling, use the Rapid 252 stapling head. Spare parts available.**



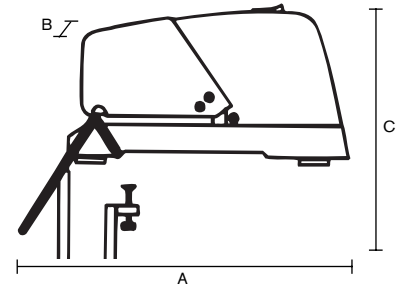
**Simple front-loading. Safe to use – will not staple when the stapling head guard is up.**

## Double functions



## Rapid 101 Electric

- Stapling performance:** Up to 50 sheets (80gsm) – flat and saddle stapling
- Magazine capacity:** 210 staples Rapid 66/6-8+ or 150 staples Rapid 44/6-8+
- Stapling depth:** Adjustable up to 85mm (flat stapling)
- Weight:** 6200g (fully equipped)
- Fitted with:** Integral pedal and work table
- Optional extra:** Rapid 252 stapling head for Rapid staples 66/6R
- Voltage/frequency:** 115V/50-60Hz, 220V/50Hz, 230V/50Hz, 240V/50Hz
- Dimensions:** A: Length 320mm  
B: Width 250mm  
C: Height 355mm



## Your benefits

- **Versatile** – staples documents, brochures, folders, loose sheets, packaging. Also does loop stapling (optional extra).
- **Functional** – two staplers in one for flat and saddle stapling.
- **Quality** – sturdy, well-proven design with replaceable stapling head for long service life.
- **Safe to use** – will not staple when stapling head guard is lifted.
- **Flexible** – adjustable stapling depth and variable impact force.
- **User-friendly** – front-loading magazine, automatic or pedal-operated stapling.



The powerful R101E, with its built-in work table, makes child's play of stapling heavy packaging (or up to 50 sheets).



Adjustable paper guide ensure precise staple positioning when saddle stapling.



The R101E is the perfect choice when versatility and operational reliability are a must.



The two-year guarantee covers material and production defects, provided the right staple is used, Rapid original staples.