

C9650

OKI
PRINTING SOLUTIONS



The hub of the office.
The heart of creative printing

C9650n
C9650dn
C9650hdn
C9650hdtm



A3+ / A3 / A4 PRINTS



COLOUR/MONO



1-20+ USERS



High Definition Color



C9000 Series



A versatile solution

High speed, high volume printer for high quality colour printing

The C9650 is the perfect addition to any business. This high performance, cost-effective colour printer has the speed, volume and flexibility to handle all the day's demands with ease – be it general office printing or creative graphics work.

Meeting a wide variety of business print needs, the C9650 can produce professional looking documents of all sizes, including large format spreadsheets, A4 booklets with heavyweight covers, 1.2m long Gant charts and oversize A3 designs.

With this outstanding versatility comes the utmost reliability. Designed by OKI Printing Solutions, the leaders in business printing, the C9650 incorporates advanced technology that ensures smooth, trouble free working. High levels of control are also built in to provide essential network security and prevent unauthorised use.

The C9650. The heart of creative printing.



QUICK OVERVIEW



1-20+ USERS



RANGE OF MEDIA HANDLING

Excellent media handling. 64–300gsm, A6–A3+



HIGH PRINT SPEED

Produces perfect colour and print quality, fast



OPERATOR PANEL

Remarkably easy to control, print and re-fill



SECURITY & CONTROL

Protects data and prevents unauthorised use



SINGLE PASS PRINTING

Designed for smooth, trouble free printing



FLEXIBILITY

**Handles multiple media.
Meets the day's demands**

Whatever the printing task, the C9650 has the capacity to handle it. Offering extreme flexibility in terms of paper size and weight and enabling creative in-house printing on a wide range of media. Print on A6 paper right up to oversized A3 sheets, or on banners up to 1.2m in length. Use heavy paper stock of up to 300gsm for booklet covers, packaging, point of sale and other print items. This extreme flexibility also extends to finishing, with a number of options available, including saddle-stitch, fold, staple and hole-punch to give documents that professional touch.

Four models are available, including duplex versions for easy double-sided printing including booklets and a top of the range model with additional paper trays for volume printing and easy changing of media.



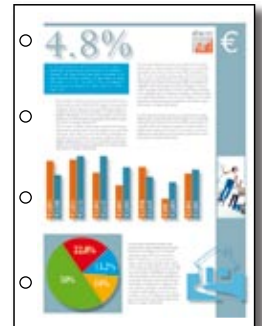
Folded and stapled booklet



Corner stapling



Duplex printing



Four-hole punch



PERFORMANCE

**Exceptional colour.
High performance printing**

The C9650 produces perfect colour and print quality, every time. Excellent print speeds of 36ppm colour and 40ppm mono will maximise the productivity of the workgroup, keeping the work flowing. Integrated duplex printing will bring savings in both operator time and paper usage.

The C9650 offers highly accurate colour results, incorporating Graphic Pro colour management which provides the tools to download colour profiles to the printer's hard disk for specific colour matching. The printer also benefits from High Definition Color technology for premium print performance.

The unique combination of ProQ2400 Multi-level technology and High Definition Toner gives a better level of detail, greater colour depth, reduced grain and a high gloss feel. This means exceptional print results, each and every time.



MANAGEMENT AND CONTROL

Protect the data. Control the colour

In a busy office, confidentiality and unauthorised use are important issues. The C9650 has the essential controls in place to safeguard documents and to monitor and control printing costs.

Security features such as Secure Erase, Data Encryption and Password Protection all help protect confidential data and prevent unauthorised access.

Print Control enables network administrators to manage colour usage, set limits and keep costs in check.



Offset sorting



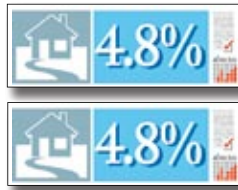
A3 Posters



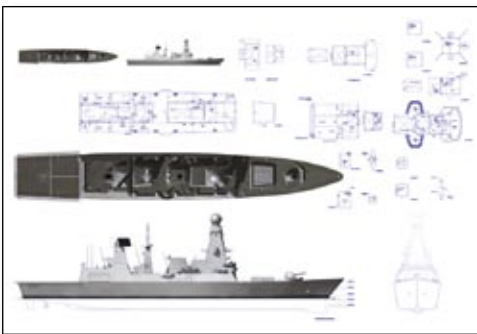
Banners up to 1.2m long



Business and loyalty cards



DL postcards



Engineering plans



CD Solutions



Packaging

Usability

Remarkably easy to control and print

Everything about the C9650 has been designed with the user in mind – from setting controls to changing consumables. Paper can be reloaded whilst the C9650 is printing from a different tray, so that print jobs are never interrupted.

The informative display panel is clear and simple to use, allowing users to perform seemingly complex print and finishing tasks with surprising ease, especially with the help of Template Manager 2006 that enables the creation of professional looking documents in-house.

Reliability

Designed to handle the workload. Built to keep working

The C9650 enjoys award-winning LED single-pass print technology. This robust mechanism has fewer moving parts than laser devices – offering proven reliability and allowing the smooth handling of a wide range of media.

The unique Auto Media Detect feature automatically detects different media settings, saving the user from manually resetting the printer when changing paper types and allowing successful, reliable printing, all day, every day.

HIGH DEFINITION COLOR



Technology without equal. Printing without effort

High Definition Color is OKI Printing Solutions' own unique collection of market defining hardware and software technologies. Together, these components deliver unsurpassed colour printing... simply, intelligently, perfectly.

As the specialists in business printing solutions and leaders in colour printing, we can be trusted to deliver. Great colour starts with OKI Printing Solutions.

UTILITY SUITE



Unlock printing power and maintain business control

The C9000 Series Utility Suite is a unique set of software designed to help users get the most out of their printer. Below are four of the advanced utilities that deliver increased printing power and management control. For a complete list of utilities refer to the product specification table overleaf.

Template Manager*

This powerful software program makes life easier in the office by providing ready-made templates for many kinds of stationery and promotional materials such as labels, business cards, banners & CD/DVD labelling. The unique Editing Suite allows the freedom to create new templates for specific media or vertical industry specific documents and to make it even easier the software automatically matches the document with the correct media. These templates can also be shared across networks for design/brand consistency.

PrintSuperVision*

This system allows IT support staff to monitor all business printers within the firewall, regardless of printer make. Access is given to networked printer

data for monitoring, reporting and managing networked printers. The user interface to this system is web browser based, making it simple to use.

Print Control

Print Control is a job accounting and reporting program which enables network administrators to track printer usage and control costs. This easy to use utility captures details such as number of printouts, whether colour or mono, the paper type and size and the consumables used. Printer access can be restricted to authorised individuals or groups, and pre-defined cost limits can be set, denying further access once these print limits have been reached.

Document Security

The C9650 is supplied with a series of tools to help protect and secure confidential documents. Data can be encrypted within the driver to prevent files being reprinted by others and a PIN code can be applied to a print job to ensure only those with access can print. In addition, the secure erase function protects documents from being recovered and re-printed from the internal hard disk.

*Utility available with Microsoft Windows only

THE C9650 ACCESSORIES

	C9650n	C9650dn	C9650hdn	C9650hdtn
2nd/3rd paper tray		○(42831303)		•
2nd/3rd lockable paper tray			○(01216601)	
Duplex	○(42797203)		•	
High Capacity Feeder		○(42831503)		•
Cabinet		○(09004256)		N/A
Memory - 256MB			○(01182901)	
Memory - 512MB			○(01182902)	
Hard Disk Drive	○(01163803)			•
4 Tray Finisher		○(01166701) High capacity feeder required		○(01166701)
5 Tray Finisher		○(01166801) High capacity feeder & 2nd tray required		○(01166801) 2nd tray required
Finisher-Punch Unit (2 hole)		○(42872901) Finisher unit required		
Finisher-Punch Unit (4 hole)		○(42872903) Finisher unit required		
Finisher-Punch Unit (4 hole, Sweden)		○(42872904) Finisher unit required		

• Standard ○ Optional (Order number)

The C9650 Colour and Mono Printer

	C9650n	C9650dn	C9650hdn	C9650hdtm
Order number	01206101	01206201	01206301	01206401
Speed & throughput	A4 Print speed	36ppm colour, 40ppm mono		
	A3 Print speed	19ppm colour, 21ppm mono		
	Time to first print	10.5 seconds colour, 9 seconds mono		
	Warm up time	85 seconds or less from power on		
	Processor speed	PowerPC 750 800MHz		
Print quality	Resolution	ProQ2400 Multi-level technology, 1200 x 600 dpi		
	Enhancements	Auto Colour Balance, Auto Registration, Auto Media Detect		
Typefaces	Printer fonts	86 scalable PCL fonts, 1 bitmap font, 10 TrueType fonts, 136 Adobe PostScript Type 1 fonts		
Compatibility	Printer languages	PCL5c, PCLXL (Colour), Adobe PostScript 3 with direct PDF Printing (v1.6), SIDM		
	Connectivity	IEEE 1284 Bi-directional Parallel and Hi-Speed USB 2.0, 10Base-T/100Base-TX/1000Base-T Ethernet		
	OS Compatibility	Windows Vista (32 bit & 64 Bit versions) / 2000 Workstation (SP3 or later SP) / 2000 Professional (SP3 or later SP) / 2000 Server (SP3 or later SP) / 2000 Advanced Server (SP3 or later SP) / XP Professional / XP Professional x64 / XP Home / 2003 server / 2003 Server x64 / Windows 2000 Server (ServicePack4) + Citrix MetaFrame XP Presentation Server Feature Release 4 / Server 2003 Standard Edition + Citrix MetaFrame XP Presentation Server Feature Release 4, Mac OS X PowerPC 10.2.8 or later, Mac OS X Intel 10.4.4 or later		
	Network & protocols	All major network protocols supported via ethernet card with internal web server for printer and network card set-up and management. TCP/IP :- ARP, RARP, IPV4/V6, ICMPv4/v6, TCP, UDP, LPR, FTP, TELNET, HTTP(IPP), BOOTP, DHCP, SNMPv1/v3, DNS, DDNS, UPnP, Bonjour, WINS, SSL/TLS, SMTP, POP3, SNT, WSDPrint, JetDirect protocols. Netware 3.x, 4.x, 5.x and 6 with full NDS and NDPS support:- PServer, RPrinter, NDPS supported via dedicated OKI NDPS Gateway. EtherTalk:- ELAP, AARP, DDP, AEP, NBP, ZIP, RTMP, ATP, PAP. NetBEUI:- SMB, NetBIOS. Other:EAP		
	Advanced networking and security	IPV6, 802.1x authentication, SNMP V3, SSL3/TLS HTTPS encryption, Secure Erase*, Data Encryption*, MAC filtering, IP filtering, Secure Print*		
Barcode support	Barcode with Checksum support			
Utility Suite	Print Control Server (Windows only), Print Control Client, PrintSuperVision.net (Windows Only), Template Manager (Windows only), Storage Device Manager* (Windows only), Profile Assistant*, Color Correct, PS Gamma Adjuster			
Memory	Std RAM	512MB		
	Max RAM	1024MB (Optional 256MB, 512MB DIMMs)		
	Hard Disk Drive	Optional 40GB	Standard 40GB	
Paper handling	Paper capacity tray 1	530 sheets of 80gsm. Paper sizes: A3, A3 Wide (up to 328 x 457mm), A4, A5, A6		
	Paper capacity optional 2nd/3rd tray	530 sheets of 80gsm. Paper sizes: A3, A3 Wide (up to 328 x 457mm), A4, A5, A6		
	Paper capacity of Multi-purpose tray	230 sheets of 80gsm. Paper sizes: A3, A3 Wide (up to 328 x 457mm), A4, A5, A6, Custom size up to 1200mm length including banners		
	High Capacity Feeder	Optional (1,590 sheets)	Standard	
	Standard tray paper weight	64 – 216gsm		
	Multi-purpose tray paper weight	64 – 300gsm		
	Duplex	Optional	Standard (64 – 188gsm)	
	Paper output	500 sheets face down tray, 200 sheets face up tray		
	Operating conditions	Temperature/Humidity	10°C to 32°C (17°C to 27°C recommended) / 20% to 80% RH (50% to 70% RH recommended)	
Storage		-20°C to 45°C, 10% to 90%RH		
Power requirements	Power supply	Single phase 220VAC to 240VAC, frequency 50Hz +/- 2Hz		
	Power consumption	Typical 750W, Peak 1500W, Idle 200W (average), Power Save <26W		
Noise level	Operating: 54dB(A) or less, Standby: 42dB(A) or less, Power save: 28dB(A) after 30 mins			
Dimensions (HxWxD)	471 x 654.5 x 623mm		873 x 654.5 x 623mm	
Weight	76kg**	81kg**	133kg**	
Duty cycle	Printer duty (max)	150,000 pages/month		
	Printer duty (average)	5,000 to 15,000 pages per month		
Warranty	Pan European 1 year on-site			

*Hard Disk Drive required. ** Includes toners, drums, belts & fuser.

Consumables Information: For the protection of your printer, and in order to ensure that you benefit from its full functionality, this model has been designed to operate only with genuine OKI Printing Solutions toner cartridges. These can be identified by the OKI trademark. Any other toner cartridge may not operate at all, even if it is described as "compatible", and if it does work, your printer's performance and print quality may be degraded.

Description	Life(pages) ¹	Order Numbers			
Toner cartridge	15,000	Cyan: 42918915	Magenta: 42918914	Yellow: 42918913	Black: 49218916
Toner rainbow pack	15,000	43112702			
Image drum	30,000	Cyan: 42918107	Magenta: 42918106	Yellow: 42918105	Black: 42918108
Transfer belt	100,000	42931603			
Fuser unit	100,000	42931703			
Waste toner box	30,000	42869403			
Finisher staples	15,000	42937603			

¹All toners: A4 pages @ 5%. Printer shipped with 7,500 pages @ 5%. All drums: A4 pages average life. Specification subject to change without notice. All trademarks acknowledged.

OKI EUROPE LTD.
 Central House, Balfour Road
 Hounslow, Middlesex TW3 1HY
 United Kingdom
 T +44(0) 20 8219 2190
 F +44(0) 20 8219 2199
WWW.OKIPRINTINGSOLUTIONS.COM

