

you can  
**Canon**

# Digital Still Compact Cameras



PowerShot and Digital IXUS cameras feature the very best in Canon technologies and precision optics, all working together to deliver stunning results, shot after shot.

## THE POWER BEHIND EVERY SHOT

**DIGIC II** **DIGIC III** Canon's revolutionary image processors: DIGIC II and the next-generation DIGIC III, lie at the core of every PowerShot and Digital IXUS camera. The massive processing capacity of DIGIC III paves the way for advanced features such as Face Detection Technology and Red-Eye Correction\*, while exceptional processing speed delivers outstanding responsiveness, fast and accurate auto focus and extended continuous shooting. Linking all key camera functions for maximum efficiency, all DIGIC processors achieve brilliant image detail, clarity and colour reproduction, while delivering long, high quality movies and more shots from a single charge.



Red-Eye Correction\*

\* Available on selected models only.

## iSAPS INTELLIGENT SCENE ANALYSIS BASED ON PHOTOSPACE

Like a built-in photographer's assistant, iSAPS is determining the optimal settings for each image even before you take a shot. It analyses the scene using PhotoSpace – an in-camera library of photographic data about the way people take pictures. It then controls the exposure, focus and white balance to ensure you get the best from every shot.



Canon Original Image



Pin-sharp clarity on the smallest detail

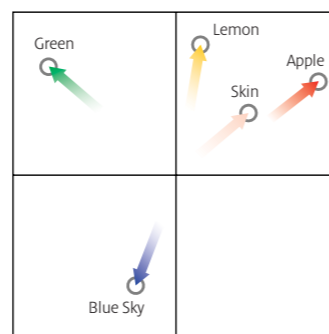
## MAKE MORE OF THE MEGAPIXELS

Canon PowerShot and Digital IXUS cameras are equipped with a range of CCD sensor sizes: from 5.0 Megapixels for detailed, photolab quality prints up to A4 size – all the way to 12.1 Megapixels – for poster prints up to A2.

## CAPTURE THE MEMORY

Canon Digital Still Cameras take photos that match the scene as you remember it. Simply being accurate is not enough. Pictures need to capture everything from ambience to stark reality. Rendering an image is a combination of exposure, colour balance and subject recognition.

Canon digital cameras render images that match the feelings you experienced when you pressed the shutter button. Exposure is accurate whatever the lighting conditions, even with off-centre subjects and low light. Colours appear as you remember them – blue skies stay blue, green leaves are green and skin tones remain beautifully natural.

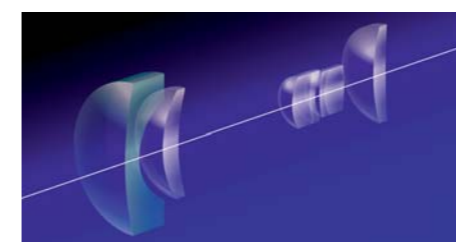


Colour Reproduction based on memory colours

# Advanced Lens Technology

With over 60 years of optical engineering experience, Canon continues to develop technologies that challenge the theoretical limits of lens performance.

Pushing the limits is a Canon tradition. Our many technological breakthroughs over the years include the world's first fluorite lens elements and the first zoom lenses with optical Image Stabilization. A passion for innovation has seen Canon register more zoom-lens design patents in Japan than any other company. Unlike other manufacturers who use off-the-shelf components, Canon designs and produces every detail of its lenses using only the very best Canon materials, know-how and machinery. Only Canon makes Canon lenses.



The Digital IXUS 860 IS features a compact 3.8x wide-angle (28mm equivalent) optical zoom lens that consists of 7 elements in 5 groups (including 1 double-sided UA lens)

## ULTRA-THIN PERFORMANCE LENSES

**UA Lens** Selected Digital IXUS cameras incorporate Canon's unique UA (Ultra-high refractive index Aspherical) lens technology to maintain seductively slender profiles without compromising on image quality and performance.

## FAST AND QUIET ZOOMING

**ULTRASONIC** An Ultrasonic Motor on the PowerShot S5 IS ensures super-fast, near-silent zooming for stills or movie clips<sup>1</sup>. This highly efficient motor powers the zoom lens in and out smoothly, quietly and swiftly, so photographers can compose pictures at the spur of a moment. Its hushed zoom action is also great for movies, since it won't be heard on the sound track.

<sup>1</sup> Noise and speed levels automatically reduce when shooting in movie mode.

# Total anti-blur solution

## OPTICAL IMAGE STABILIZER

Any slight shake while hand-holding a camera can cause blurred photos. Canon's optical Image Stabilizer (IS) technology ensures crisp, clear images by detecting and correcting this camera shake. The camera is able to microscopically adjust its own lens with absolute accuracy up to 4,000 times every second, so the image you see is the image you capture. Image Stabilizer is especially useful at full zoom, which exaggerates camera movements, and in low-light settings that call for slower shutter speeds.



## ISO 800 ISO 1600 ISO 3200 NR EXTENDED ISO SHOOTING

With light sensitivity of up to ISO 1600\*, Canon Digital Still Cameras allow shooting in extremely low light conditions without a flash; great for maintaining a scene's ambience. When slow shutter speed risks camera shake, Auto ISO Shift alerts you and lets you boost ISO with the press of a button to instantly counteract potential blurring. For clean results at high ISO settings, Noise Reduction Technology harnesses the power of DIGIC III to suppress grain and speckle. The Digital IXUS 960 IS, PowerShot G9 and PowerShot A650 IS even have a super high-speed Special Scene Mode that increases sensitivity to ISO 3200\*\* for near-dark conditions.

\* High ISO settings are only available on selected camera models. Please refer to the technical specifications for details.  
\*\* Recording pixels fixed at 1600 x 1200.



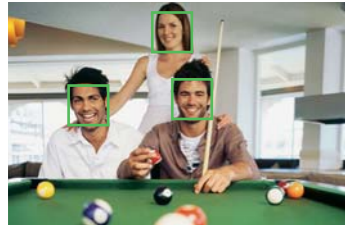
Without IS



With IS

# Creativity you control

Canon Digital Still Cameras are packed with user-friendly functions to help you get the best from the technology inside. Flexible focusing options, give you as much or as little control as you like – for precise results time after time.



## Face Detection Technology

### FACE DETECTION AF/AE/FE\*

Utilising the power of DIGIC III, Canon's Face Detection Technology ensures superb people shots by automatically detecting subjects in the frame and setting the correct focus, flash level and exposure.

## AiAF

### ARTIFICIAL INTELLIGENCE AUTO FOCUS

Automatically detects the closest object from nine fixed focusing areas and gives the optimum focus and exposure, even when your subject is off-centre.

## FlexiZone AF/AE CONTROL

### FLEXIZONE AF/AE CONTROL\*

FlexiZone AF/AE control lets you manually move the focus point to almost anywhere in the frame. Perfect focus and exposure is then assured.

\* Featured on selected models only, please see specifications for details.



Custom Color

### COLOURS THAT CAPTIVATE

Add a personal touch to your image or movie with Canon's My Colors<sup>1</sup>. Choose from vivid blue for the sky, antique sepia for the portrait or classic black and white for the landscape. These creative options and many more – normally available only on a computer – can be applied directly from your camera, before or after the shot<sup>1</sup>.

<sup>1</sup> My Colors settings vary on selected models. Please refer to the technical specifications for details.

### SHOOTING MODES<sup>1</sup> :

#### A MODE FOR EVERY MOMENT

Canon Digital Still Cameras feature a huge range of preset automatic and creative shooting modes to help you get the most from every shot.

- AUTO
- PORTRAIT
- LANDSCAPE
- NIGHT SNAPSHOT
- SPORTS
- APERTURE PRIORITY
- SHUTTER SPEED PRIORITY
- CUSTOM
- PROGRAM
- MANUAL
- MOVIE
- STITCH ASSIST

<sup>1</sup> Shooting modes and Special Scene Modes vary on selected models. Please refer to the technical product specifications for details.

### SCN SPECIAL SCENE

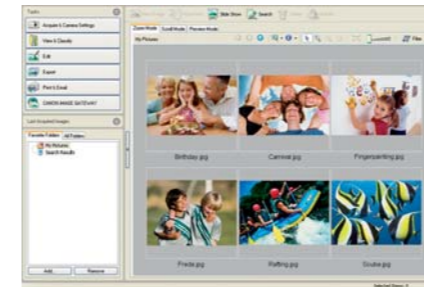
This mode has automatically stored presets for shooting various scenes. You can select them to ensure the most appropriate settings, without having to use the manual controls.

- BEACH
- INDOOR
- FIREWORKS
- UNDERWATER
- FOLIAGE
- SNOW
- KIDS & PETS
- NIGHT SCENE
- AQUARIUM
- COLOR SWAP
- COLOR ACCENT
- ISO 3200<sup>2</sup>
- CREATIVE LIGHT EFFECT

<sup>2</sup> Recording pixels fixed at 1600 x 1200.

# Easy sharing & printing

Great photos deserve to be shared. Canon Digital Still Cameras and supplied software make it easier than ever to set your images free.



### COMPREHENSIVE SOFTWARE

With Canon's outstanding supplied image management software you can edit and organise photos and movies or create albums of favourite images. ZoomBrowser EX (for Windows) and ImageBrowser (for Macintosh) allow you to transfer, browse, archive and retouch your photos with ease. Make dynamic slideshows or print photos in a variety of sizes, all with easy step-by-step selections. Add an extra dimension with sound effects, music or commentary. You can also resize images for sending via e-mail. With Photostitch, up to 26 separate images can be joined to create a single, seamless wide-format picture.

## CANON iMAGE GATEWAY

### CANON IMAGE GATEWAY

Open up a world of online digital photography with CANON iMAGE GATEWAY<sup>1</sup>. Register your new Canon digital product today and start enjoying 100MB of online space for sharing photos with friends and family. Create themed photo albums with customised layouts and backgrounds. Order photo prints directly from your online photo album. Get hints, tips and ideas, plus customise your camera with great start-up images and sounds. With CANON iMAGE GATEWAY, you can. [www.cig.canon-europe.com](http://www.cig.canon-europe.com)

<sup>1</sup> Not available in all regions.

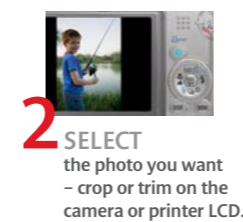


### DIRECT PRINTING

With PictBridge support and the Print/Share button found on all current Canon Digital Still Cameras, getting quality photo prints of your favourite shots is as simple as 1. Connect, 2. Select, and 3. Print. Connect to any Canon SELPHY Compact Photo Printer or PIXMA printer, select the desired image, push 'Print/Share' and within seconds you'll be passing around a lab-quality photo print.



OR



To make direct printing even easier, all current Canon Digital Still Cameras have a Print/Share button that illuminates when ready and automatically prints the selected image when pressed.

# PowerShot

## The power of PowerShot

Creative control – as much or as little as you like. Whether you're new to digital photography or looking to explore your creative side, PowerShot lets you move at your own speed.

From manual to fully automatic – and everywhere in between – you have the flexibility to take charge when you want to and let the camera take over when you don't.

Each model in the PowerShot range is packed with features and functions to make it versatile and easy to use.

Preset automatic shooting modes – like Fireworks, Snow and Night Snapshot – are quick to select, leaving you free to focus on capturing the moment. A wide range of optional accessories lets you stretch your creative limits when you're ready.

Putting you in control. That's the power of PowerShot.

## Imaging excellence

Achieve peak performance with the top-of-the-range PowerShot G9.

The new PowerShot G9 leads Canon's compact digital camera range with good reason. Features normally found only on SLR cameras give it the convenience of a compact with the performance of a pro.

RAW image recording captures maximum data for greater editing flexibility. A large 1/1.7" CCD sensor handles a

whopping 12.1 Megapixels. With add-on accessories like Canon lenses and Speedlite flashes, the PowerShot G9 can be made ready for any task in no time at all.

### "It's along for the ride."

Even a professional can't carry her gear everywhere. When photographer Suzie Geenen is looking for adventure, she takes off with the PowerShot S-series. "Sometimes I just want to take a break and get away from it all. All except my camera! That's when I need compact size with high-spec features. And that's when I reach for PowerShot."



### PowerShot G9



Achieve peak performance. Capturing an impressive 12.1 Megapixels with a 1/1.7" sensor, the PowerShot G9 is the perfect partner for advancing photographers. Flexible control, RAW image recording and a versatile range of accessories set new standards in compact photography.

- Optical Image Stabilizer lens with SR coating
- RAW mode recording and enhanced RAW Image Task for total post-shoot control
- DIGIC III and iSAPS for fast response, superb image quality and advanced noise reduction
- Face Detection AF/AE/FE with Face Select and Track plus Red-Eye Correction in playback
- 9-point AiAF and FlexiZone AF/AE including AF frame-size selection
- High resolution Pure-Color LCD II with wide-viewing angle and anti-glare coating
- ISO 1600 and Auto ISO Shift
- Full manual control with x2 custom settings and Time Lapse movies
- Optional lens and case accessories plus Canon EX Speedlite flash range\* with wireless flash control

\* See specifications for details



### PowerShot S5 IS



Featuring a 12x optical zoom lens with Image Stabilizer, Face Detection Technology and extensive movie options, the PowerShot S5 IS excels in any situation. Full manual functions and Speedlite flash compatibility give you complete shooting versatility.

- Optical Image Stabilizer, fast Ultrasonic Motor and UD lens
- Extra long\* VGA movies with Photo in Movie function and stereo sound
- DIGIC III and iSAPS for fast response, superb image quality and advanced noise reduction
- Face Detection AF/AE/FE for outstanding people shots plus Face Detection AF/AE in movies
- Red-Eye Correction in playback
- High ISO 1600 and Auto ISO Shift for flash-free indoor and low light shooting
- Large high-resolution vari-angle LCD
- 0cm Super Macro and Custom mode
- Accessory system includes wide/tele/close-up lenses, lens hood and Canon Speedlite flash range\*\*

\* Depending on memory card used  
\*\* See specifications for details



### PowerShot SX100 IS



Get in on the action with a remarkable 10x optical zoom lens. The compact and friendly PowerShot SX100 IS keeps your subject blur-free and in focus with enhanced Face Detection Technology and optical Image Stabilizer. Clear, simple controls make photography easy and flexible for the whole family.

- Optical Image Stabilizer for steady shots in low light and at full zoom
- DIGIC III for lightning-fast response, outstanding image quality and advanced noise reduction
- Enhanced Face Detection Technology with New Face Selector button and Red-Eye Correction in playback
- Large, wide-view LCD with Night Display
- Full manual control plus My Colors\* for in-camera photo effects
- Extra telephoto reach with Digital Tele-Converter & Safety Zoom
- Clear, simple button layout and control wheel for enhanced usability
- Optional high-power flash and ISO 1600 for low-light shooting
- 1cm Macro mode for close-up focusing
- Smooth VGA and Long Play movies with sound (30 fps)

\* See specifications for details





## PowerShot A650 IS



Take your creative vision to a new level with the swivel-screen PowerShot A650 IS. Get stunning results with 12.1 Megapixels and a 6x optical zoom lens with optical Image Stabilizer, plus full manual control and add-on lens accessories to express your true creative vision.

- Optical Image Stabilizer for steady shots in low light and at full zoom
- DIGIC III and iSAPS for lightning-fast response, superb image quality and advanced noise reduction
- Face Detection AF/AE/FE with Red-Eye Correction in playback
- My Colors\* for in-camera photo effects
- Extra telephoto reach with Digital Tele-Converter & Safety Zoom
- Auto ISO Shift and ISO 1600 for blur-free, low-light shooting
- Smooth VGA movies (30 fps) plus new Long Play mode
- Accessory system includes wide/tele lenses, high-power flash and waterproof case
- Conveniently powered by AA batteries

\* See specifications for details



## PowerShot A720 IS



With 8 Megapixels and a 6x optical zoom with Image Stabilizer, the PowerShot A720 IS packs a powerful punch into an affordable package. Explore your creative instincts with features that give you as much control as you want - like ISO 1600 to continue flash-free shooting even after dark.

- Optical Image Stabilizer for steady shots in low light and at full zoom
- DIGIC III and iSAPS for lightning-fast response, superb image quality and advanced noise reduction
- Face Detection AF/AE/FE with built-in Red-Eye Correction in playback for great people shots
- My Colors\* for in-camera photo effects
- Extra telephoto reach with Digital Tele-Converter & Safety Zoom
- ISO 1600 for blur-free, low-light shooting
- Smooth VGA movies (30 fps) plus new Long Play mode
- Accessory system includes wide/tele/close-up lenses, high-power flash and waterproof case
- Conveniently powered by AA batteries

\* See specifications for details



## PowerShot A570 IS



The PowerShot A570 IS is ideal for creative photographers, pushing the boundaries with optional lens accessories and full manual exposure control. A 4x optical zoom with Image Stabilization and DIGIC III with Face Detection Technology help you find the perfect shot.

- Canon premium 4x optical zoom lens
- DIGIC III for lightning fast response, superb image quality and advanced noise reduction
- Face Detection Technology with Red-Eye Correction in playback for great people shots
- High ISO 1600 for flash-free indoor and low light shooting
- Wide range of shooting modes include full manual control
- Smooth 30 fps VGA and 60 fps QVGA movies with sound
- LCD with Night Display and optical viewfinder
- Complete range of optional accessories includes wide/tele/close-up lenses, slave flash and waterproof case
- PictBridge and dedicated Print/Share button for one-touch printing and uploading
- Conveniently powered by AA batteries



## PowerShot A560



Capture stunning portraits with the affordable PowerShot A560. Innovative Face Detection Technology makes it easy to shoot bright, sharp faces. Get the right shot indoors or in other low light conditions with High ISO 1600.

- Easy to use with popular Scene Modes on the Mode Dial and one-touch record/review button
- DIGIC III for lightning fast response, superb image quality and advanced noise reduction
- 9-Point AiAF and Face Detection AF/AE/FE for great people shots
- Red-Eye Correction in playback, using Face Detection Technology
- ISO 1600 and High ISO Auto for low light shooting
- LCD screen with Night Display and Grid Line Overlay
- My Colors\* photo effects
- Smooth 30 fps VGA and 60 fps QVGA movies with sound
- PictBridge and dedicated Print/Share button for one-touch printing and uploading
- Conveniently powered by AA batteries

\* See specifications for details



## PowerShot A550



The PowerShot A550 features ISO 800 so you can enjoy flash-free shooting indoors and in other low light situations. With 7.1 Megapixels and a 4x optical zoom, this compact performer offers a lot of camera for your money.

- Easy to use with popular Scene Modes on the Mode dial and one-touch record/review button
- Fast, sharp results with DIGIC II, iSAPS and 9-point AiAF
- LCD with Night Display and selectable Grid Line Overlay
- 13 versatile shooting modes plus My Colors\* in-camera photo effects
- Smooth 30 fps VGA and 60 fps QVGA movies with sound
- ISO 800 and High ISO Auto for flash-free indoor and low light shooting
- PictBridge and dedicated Print/Share button for one-touch printing and uploading
- Conveniently powered by AA batteries

\* See specifications for details



## PowerShot A460



Compact, affordable and incredibly easy, the PowerShot A460 is the ideal take-everywhere camera for users of any age. Choose from 3 attractive colours\* and add an extra dash of fun to life's special moments.

- Fast, superb results with DIGIC II, iSAPS and 5-point AiAF
- 12 shooting modes include 8 easy-to-use Special Scene Modes
- My Colors\*\* in-camera photo effects
- Record VGA movie clips with sound for in-camera, PC or TV playback
- LCD with selectable Grid Line Overlay for easy composition
- 1cm Super Macro mode for sharp close-ups
- 3 attractive colour options\*
- Easy direct printing and uploading with Print/Share button and PictBridge compatibility
- Conveniently powered by AA batteries

\* Some colour variations may not be available in some regions  
\*\* See specifications for details



# DIGITAL IXUS

For more than a decade, IXUS has been changing our perception of what a camera should be. Today, the iconic IXUS has come to symbolize Canon design excellence, pure and simple.

Classic styling and cutting-edge performance have made the IXUS range of compact digital cameras one of the most successful ever. Canon first hit upon this winning combination in 1996. In the years that have followed, IXUS has constantly re-invented itself, but always stayed true to its original vision: achieving the ideal balance of form and function.

Whichever model you choose, the IXUS label ensures you'll find high-performance lenses, Canon's Visionary Technologies and an ultra-compact design that is often copied, but never equalled.

## Tantalizing titanium

Tough yet sophisticated. That's the allure of titanium. The Digital IXUS 960 IS perfectly embodies both.

High tech meets high life in the new Digital IXUS 960 IS. Designed in titanium for strength and style, this elegant IXUS features an astounding 12.1 Megapixels and a 3.7x optical zoom lens.

with Face Detection Technology provides unprecedented power. Advanced technology wrapped in the most exclusive design - welcome to the ultimate IXUS experience.

Optical Image Stabilizer, ISO 1600 and Auto ISO Shift present a total anti-blur solution, and Canon's latest DIGIC III processor



"I never noticed before."

When she's not studying business, Thirsa Kruithof is studying the world around her. The optical Image Stabilizer on her Digital IXUS 850 IS keeps every detail clear when she gets up close. "I love to zoom in and look at the stuff most people never even notice. Seeing something new, that's the fun part."



### DIGITAL IXUS 960 IS



The pinnacle of sophisticated design, the Digital IXUS 960 IS delivers aesthetic and technical excellence. 12.1 Megapixels, a 3.7x optical Image Stabilizer lens and Face Detection Technology unite in a titanium body for the ultimate IXUS experience.

- Exclusive titanium body with Touch Control Dial
- 3.7x optical zoom UA lens with optical Image Stabilizer (IS)
- Total anti-blur solution with ISO 1600, Auto ISO Shift and IS
- DIGIC III processor and iSAPS for lightning fast response, superb image quality and advanced noise reduction
- Face Detection AF/AE/FE and Red-Eye Correction in playback
- Large, high resolution PureColor LCD with wide viewing angle plus real-image optical viewfinder
- ISO 3200 and My Colors photo effects
- Extensive movie options with high resolution XGA, VGA with Long Play (LP) and Time Lapse Movie
- Safety Zoom and Digital Tele-Converter for extra telephoto reach
- Optional waterproof and soft leather cases



### DIGITAL IXUS 950 IS



Advanced technologies including a powerful 4x optical zoom UA lens with optical Image Stabilizer are packed within the sleek curves of the Digital IXUS 950 IS. Face Detection Technology and Red-Eye Correction deliver great results with every snapshot.

- Three-tone curvature design and Touch Control Dial
- 4x optical zoom UA lens with optical Image Stabilizer (IS)
- Total anti-blur solution with ISO 1600, Auto ISO Shift and IS
- DIGIC III processor and iSAPS for lightning fast response, superb image quality and advanced noise reduction
- Face Detection AF/AE/FE and Red-Eye Correction in playback
- Large, high resolution PureColor LCD with wide viewing angle plus real-image optical viewfinder
- My Colors photo effects
- Long\* 30 fps VGA movies including Time Lapse Movie
- Shortcut button for instant access to favorite functions
- Optional waterproof and soft leather cases

\* Depending on memory card speed and capacity



### DIGITAL IXUS 860 IS



The compact camera for the serious photographer, the 8.0 Megapixel Digital IXUS 860 IS combines photographic prowess with compelling design. A 3.8x wide-angle Image Stabilizer lens captures every detail of panoramic vistas and large group shots.

- Wide-angle (28mm) 3.8x optical zoom with optical Image Stabilizer (IS)
- Total anti-blur solution with ISO 1600, Auto ISO Shift and IS
- Striking modern design with Touch Control Dial
- DIGIC III processor and iSAPS for lightning fast response, superb image quality and advanced noise reduction
- Face Detection AF/AE/FE and Red-Eye Correction in playback
- High resolution PureColor LCD with wide viewing angle
- Safety Zoom and Digital Tele-Converter for extra telephoto reach
- My Colors photo effects
- Extensive movie options including VGA (30 fps) with Long Play (LP) and Time Lapse Movie
- Optional waterproof and soft leather cases





Frans Pegt - 'Hidden Passage'



### DIGITAL IXUS 75

71 MEGA PIXELS | 3x OPTICAL ZOOM | DIGIC III | 3.0" LCD | 17 SHOOTING MODES

From its bold 'black circle' design motif to innovative, touch-sensitive controls, the Digital IXUS 75 is styled to stand out. An extra large 3.0" LCD, Canon's DIGIC III processor and a host of advanced features ensure equally stunning performance.

- Cutting edge design incorporating accents of black and Touch Control Dial
- Compact 3x optical zoom UA lens
- DIGIC III and iSAPS for fast response times, superb image quality and advanced noise reduction
- Face Detection AF/AE/FE and Red-Eye Correction in playback
- High resolution PureColor LCD with wide viewing angle
- High ISO 1600 and Auto ISO Shift - ideal for parties, restaurants and other low light environments
- My Colors photo effects
- Long\* 30 fps VGA movies including Time Lapse Movie
- Shortcut button and dedicated Playback button for quick image review

\* Depending on memory card speed and capacity

ISO 1600 | UA Lens | Face Detection Technology | Red-eye Correction | Hi-Speed USB | Print/Share Button | PictBridge | CANON iMAGE GATEWAY



### DIGITAL IXUS 70

71 MEGA PIXELS | 3x OPTICAL ZOOM | DIGIC III | 2.5" LCD | 17 SHOOTING MODES

Inspired by the timeless appeal of the very first IXUS, the Digital IXUS 70 is a masterpiece of minimalist design. Equipped with precision optics and leading technologies, this seductively slim camera offers exceptional performance to match its breathtaking looks.

- Sharp, minimalist design with slender all-metal body
- Compact 3x optical zoom UA lens
- DIGIC III and iSAPS for fast response times, superb image quality and advanced noise reduction
- Face Detection AF/AE/FE and Red-Eye Correction in playback
- High resolution PureColor LCD with wide viewing angle
- High ISO 1600 and Auto ISO Shift - ideal for parties, restaurants and other low light environments
- My Colors photo effects
- Long\* 30 fps VGA movies including Time Lapse Movie
- Shortcut button for instant access to favorite functions

\* Depending on memory card speed and capacity

ISO 1600 | UA Lens | Face Detection Technology | Red-eye Correction | Hi-Speed USB | Print/Share Button | PictBridge | CANON iMAGE GATEWAY

## Features

The result of decades of research, every Canon digital camera incorporates a wealth of features. To make it easy to distinguish between models, a summary of key features is listed in the chart below.

### Feature Compatibility Chart

	POWERSHOT	PowerShot G9	PowerShot S5 IS	PowerShot SX100 IS	PowerShot A650 IS	PowerShot A720 IS	PowerShot A570 IS	PowerShot A560	PowerShot A550	PowerShot A460	DIGITAL IXUS	Digital IXUS 960 IS	Digital IXUS 950 IS	Digital IXUS 860 IS	Digital IXUS 75	Digital IXUS 70
Megapixels		12.1	8.0	8.0	12.1	8.0	7.1	7.1	7.1	5.0		12.1	8.0	8.0	7.1	7.1
Optical Zoom		6x	12x	10x	6x	6x	4x	4x	4x	4x		3.7x	4x	3.8x	3x	3x
Optical Image Stabilizer (IS)		●	●	●	●	●	●					●	●	●		
USM																
DIGIC III		●	●	●	●	●	●					●	●	●	●	●
DIGIC II								●	●							
LCD Monitor		3.0"	2.5"	2.5"	2.5"	2.5"	2.5"	2.0"	2.0"			2.5"	2.5"	3.0"	3.0"	2.5"
Vari-angle LCD Monitor																
Shooting Modes		25	22	18	21	19	19	14	13	12		18	18	17	17	17
FlexiZone AF/AE		●	●	●	●	●	●	●	●			●	●	●	●	●
9-point AiAF		●		●	●	●	●	●	●			●	●	●	●	●
5-point AiAF										●						
Face Detection Technology		●	●	●	●	●	●	●	●			●	●	●	●	●
Red-Eye Correction		●	●	●	●	●	●	●	●			●	●	●	●	●
ISO 800		●	●	●	●	●	●	●	●			●	●	●	●	●
ISO 1600		●	●	●	●	●	●	●	●			●	●	●	●	●
ISO 3200 (Special Scene Mode) <sup>1</sup>		●	●	●	●	●	●	●	●			●	●	●	●	●
Digital Tele-Converter		●	●	●	●	●	●	●	●			●	●	●	●	●
Safety Zoom		●	●	●	●	●	●	●	●	●		●	●	●	●	●
My Colors		●	●	●	●	●	●	●	●	●		●	●	●	●	●
VGA (30 fps) movies		●	●	●	●	●	●	●	●	●		●	●	●	●	●
XGA (15 fps) movies		●	●	●	●	●	●	●	●	●		●	●	●	●	●
Time Lapse Movies		●	●	●	●	●	●	●	●	●		●	●	●	●	●
Widescreen (16:9) still image recording		●	●	●	●	●	●	●	●	●		●	●	●	●	●
PictBridge & Direct Print		●	●	●	●	●	●	●	●	●		●	●	●	●	●
Print/Share button		●	●	●	●	●	●	●	●	●		●	●	●	●	●
USB 2.0 Hi-Speed		●	●	●	●	●	●	●	●	●		●	●	●	●	●
CANON iMAGE GATEWAY		●	●	●	●	●	●	●	●	●		●	●	●	●	●
Optional Tele/Wide Converter lens		●	●	●	●	●	●	●	●	●		●	●	●	●	●
Optional Waterproof case		●	●	●	●	●	●	●	●	●		●	●	●	●	●

<sup>1</sup> Recording pixels fixed at 1600 x 1200.

Ilona van Genderen Stort - 'Pride of Asparagus'



# SELPHY

COMPACT PHOTO PRINTER

## My world, My prints, My way

What if the moments of your life could be printed in full photo-lab quality at any moment of the day? SELPHY Compact Photo Printers can help you produce prints with vibrant colours and crisp details, straight from your camera.

## Home and away

Beautiful photo prints are always at your fingertips with the SELPHY ES2.

Elegantly designed and practical, too. That's the secret of SELPHY. With an optional battery pack and easy-carry handle, SELPHY ES2 is always ready to go. Get durable, lab-style photo prints direct from your camera or mobile phone no matter where you are.

With Auto Image and Red-Eye Correction, your photos don't just look good, they look even better than on screen.

A protective coating guards against splashes and sticky fingers – and keeps prints bright, rich and vivid for up to 100 years\*.

Integrated ink-and-paper cassettes with a 50-sheet capacity mean replacement is simple and infrequent. SELPHY's Easy Scroll Wheel provides an easy and intuitive interface alongside a 3.0" tilting LCD screen.

\* See specifications for details

## “It's all about sharing.”

As a mother of one, Ans van den Waardenburg knows that babies don't stay that way for long. But, thanks to her SELPHY ES1, precious moments can last a lifetime. “My parents are really the ones who love it most. We always make prints on the spot. So after every visit, they can take their granddaughter home with them.”



## SELPHY ES2

Experience the freedom of choice with the SELPHY ES2. Print effortlessly from a wide variety of sources: computer, camera, even your mobile phone. Choose your layout, correct red eye and apply creative effects. Share the fun – at home or on the go.

- Unique integrated Ink and Media cassette, the “Easy Photo Pack”
- Compact, vertical design with carry handle, 3.0" tilting colour LCD and Easy-Scroll Wheel
- Superior quality prints with DIGIC II
- Image Optimize function automatically detects and optimises faces
- Print from mobile phones\*
- Optional battery pack for printing away from home
- Creative Print button to add frames, clip art, fun layouts and more
- Apply Image and My Colors photo effects, automatic Red-Eye Correction, or trim images
- 100-year\*\* print with instantly dry, durable coating
- Quick start-up

\* With IrDA or optional Bluetooth® adaptor  
\*\* See specifications for details



## SELPHY ES20

The vertical design of the SELPHY ES20 is the perfect fit for any interior and simply a joy to use. Just slide in an Easy Photo Pack and begin exploring a wide range of creative options for personalised, lab-quality prints that will delight family and friends.

- Unique integrated Ink and Media cassette, the “Easy Photo Pack”
- Compact, vertical design with carry handle and 2.5" colour LCD
- Superior quality prints with DIGIC II
- Image Optimize function automatically detects and optimises faces
- Print from mobile phones\*
- Creative Print button to add frames, clip art, fun layouts and more
- Apply My Colors photo effects, automatic Red-Eye Correction, or trim images
- 100-year\*\* print with instantly dry, durable coating
- Quick start-up

\* With optional Bluetooth® adaptor  
\*\* See specifications for details



Frans Pegt – ‘Harvest Day’



## SELPHY CP750

SELPHY CP750 is the perfect accessory for your digital camera. Create photolab-quality prints right in your own home. Or use the optional battery pack for instant prints on the move. Advanced features make printing more flexible and enjoyable for everyone.

- Ultra-compact photo printer
- Optional battery pack for printing away from home
- Print direct from compatible cameras, mobile phones\* and most memory cards\*\*
- High-quality 100-year\*\* prints with instantly dry, durable coating
- Large 2.4" colour LCD display for easy viewing
- Quick start-up and fast 58-second prints\*\*
- Red-Eye Correction function in printer
- Image Trim and My Colors functionality for artistic prints
- Stylish design with retractable USB cable
- Convenient ink/paper packs in a range of sizes\*\*

\* With IrSimple (high-speed IrDA protocol) or optional Bluetooth® adaptor  
\*\* See specifications for details



## SELPHY CP740

A compact photo printer the whole family can enjoy. The SELPHY CP740 makes printing at home fun and affordable. Advanced features bring out the best in your photos. With a range of different print sizes, the results you want are always close at hand.

- Affordable home photo printing
- Easy and fun for the whole family to enjoy
- Print direct from compatible cameras, mobile phones\* and most memory cards\*\*
- High-quality 100-year\*\* prints with instantly dry, durable coating
- User-friendly 2.0" colour LCD display
- Quick start-up and fast 58-second prints\*\*
- Red-Eye Correction function in printer
- Compact design with retractable USB cable
- Convenient ink/paper packs in a range of sizes\*\*

\* With optional Bluetooth® adaptor  
\*\* See specifications for details



Spencer Newbury – 'Look What I've Got!'

## Print perfect photos in seconds

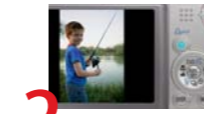


**1** CONNECT your camera directly to your printer.

OR



INSERT your memory card.



**2** SELECT the photo you want – crop or trim on the camera or printer LCD.



**3** PRINT your pictures in a variety of sizes.



To make direct printing even easier, all current Canon Digital Still Cameras have a Print/Share button that illuminates when ready and automatically prints the selected image when pressed.



## The choice is yours




Not everyone wants a standard size print. Thankfully the SELPHY Compact Photo Printers are extremely accommodating. Choose from bordered and borderless postcard size, 100 x 200mm wide size<sup>1</sup>, credit card size prints, stickers and even mini-stickers<sup>1</sup>. Canon Digital Still Cameras give you the option to rotate the image 90 degrees or crop/zoom in on details – and with the latest Canon models you can also create ID Photo Prints and Movie Prints<sup>2</sup>.

<sup>1</sup> SELPHY CP750 and SELPHY CP740 only.  
<sup>2</sup> Options depend on camera, printer, printer tray and printing standard chosen.  
<sup>3</sup> SELPHY ES2 and SELPHY ES20 only.









## SELPHY Print Media and Accessories



### Print Media for SELPHY ES2 and SELPHY ES20

 <p><b>Postcard paper (100 x 148mm)</b></p> <ul style="list-style-type: none"> <li>Integrated ink &amp; paper cassette for 50 postcard size prints (Easy Photo Pack E-P50)</li> <li>Integrated ink &amp; paper cassette for 100 postcard size prints (Easy Photo Pack E-P100)</li> </ul>	 <p><b>B/W Postcard paper (100 x 148mm)</b></p> <ul style="list-style-type: none"> <li>Integrated ink &amp; paper cassette for 25 black &amp; white postcard size prints (Easy Photo Pack E-P25BW)</li> </ul>	 <p><b>L-size paper (89 x 119mm)</b></p> <ul style="list-style-type: none"> <li>Integrated ink &amp; paper cassette for 50 L-size prints (Easy Photo Pack E-L50)</li> <li>Integrated ink &amp; paper cassette for 100 L-size prints (Easy Photo Pack E-L100)</li> </ul>
 <p><b>Credit card size paper (54 x 86mm)</b></p> <ul style="list-style-type: none"> <li>Integrated ink &amp; paper cassette for 25 credit card size prints (Easy Photo Pack E-C25)</li> </ul>	 <p><b>Credit card size stickers (54 x 86mm)</b></p> <ul style="list-style-type: none"> <li>Integrated ink &amp; paper cassette for 25 credit card size stickers (Easy Photo Pack E-C25L)</li> </ul>	

### Print Media for SELPHY CP750 and SELPHY CP740

 <p><b>Postcard size (100 x 148mm)</b></p> <ul style="list-style-type: none"> <li>36 sheets incl. ink cassette (KP-36IP)</li> <li>72 sheets value pack containing two sets of KP-36IP (KP-72IP)</li> <li>108 sheets value pack containing three sets of KP-36IP (KP-108IP)</li> </ul>	 <p><b>L-size paper (119 x 89mm)</b></p> <p>36 sheets, incl. ink cassette (KL-36IP)</p>	 <p><b>Credit card size paper (86 x 54mm)</b></p> <p>36 sheets, incl. ink cassette (KC-36IP)</p>
 <p><b>Credit card size stickers (86 x 54mm)</b></p> <p>18 sheets, incl. ink cassette (KC-18IF)</p>	 <p><b>Mini stickers</b></p> <p>18 sheets of mini-sticker paper (8 stickers per sheet), incl. ink cassette (KC-18IL)</p>	 <p><b>Wide size paper (100 x 200mm)</b></p> <p>24 sheets, incl. ink cassette (KW-24IP)</p>

## Accessories

 <p>Bluetooth® Adapter BU-20</p>  <p>CP Printer Carrying Case DCC-CP1</p>	<table border="1"> <thead> <tr> <th></th> <th>SELPHY ES2</th> <th>SELPHY ES20</th> <th>SELPHY CP750</th> <th>SELPHY CP740</th> </tr> </thead> <tbody> <tr> <td>Battery Pack (NB-CP2L)</td> <td></td> <td></td> <td></td> <td></td> </tr> <tr> <td>Battery Pack (NB-ES1L)</td> <td>●</td> <td></td> <td></td> <td></td> </tr> <tr> <td>Carrying Case (DCC-CP1)</td> <td></td> <td></td> <td>●</td> <td>●</td> </tr> <tr> <td>Bluetooth® Adapter (BU-20)</td> <td>●</td> <td>●</td> <td>●</td> <td>●</td> </tr> <tr> <td>Paper cassette for L-size paper (PCL-CP200)</td> <td></td> <td></td> <td>●</td> <td>●</td> </tr> <tr> <td>Paper cassette for Postcard size paper (PCP-CP200)</td> <td></td> <td></td> <td>●</td> <td>●</td> </tr> <tr> <td>Paper cassette for credit card size paper (PCC-CP100) / wide size paper (PCW-CP100)</td> <td></td> <td></td> <td>●</td> <td>●</td> </tr> </tbody> </table>		SELPHY ES2	SELPHY ES20	SELPHY CP750	SELPHY CP740	Battery Pack (NB-CP2L)					Battery Pack (NB-ES1L)	●				Carrying Case (DCC-CP1)			●	●	Bluetooth® Adapter (BU-20)	●	●	●	●	Paper cassette for L-size paper (PCL-CP200)			●	●	Paper cassette for Postcard size paper (PCP-CP200)			●	●	Paper cassette for credit card size paper (PCC-CP100) / wide size paper (PCW-CP100)			●	●
	SELPHY ES2	SELPHY ES20	SELPHY CP750	SELPHY CP740																																					
Battery Pack (NB-CP2L)																																									
Battery Pack (NB-ES1L)	●																																								
Carrying Case (DCC-CP1)			●	●																																					
Bluetooth® Adapter (BU-20)	●	●	●	●																																					
Paper cassette for L-size paper (PCL-CP200)			●	●																																					
Paper cassette for Postcard size paper (PCP-CP200)			●	●																																					
Paper cassette for credit card size paper (PCC-CP100) / wide size paper (PCW-CP100)			●	●																																					



# Camera Accessories

## Soft Cases

Your new camera looks great – and you want to keep it that way. The cases in Canon's range not only protect your new investment; they look sharp, help keep you organised and help keep your camera close beside you – wherever you are. Because Canon cameras are used in so many different ways and in so many different environments, Canon has produced a range of different cases. Each is made with different materials and styles, each with a different purpose and mood in mind.

### CUSTOM CASES

Canon's custom cases are specifically designed to fit the camera. Most of them include a convenient pocket for spare memory cards and batteries, putting an end to fumbling about in the bottom of packs and bags.

 <p><b>DCC-700</b></p> <p>Protective soft case with memory card pocket. For PowerShot A650 IS and PowerShot SX100 IS.</p>	 <p><b>DCC-90</b></p> <p>Protective, close fitting soft case. For PowerShot S5 IS.</p>
 <p><b>DCC-80</b></p> <p>Soft case with space for a spare set of AA-sized batteries and memory card. For PowerShot A720 IS/A570 IS/A560/A550.</p>	 <p><b>DCC-400</b></p> <p>Protective, slim soft case. For PowerShot A460.</p>



Julie Stadler – 'Hello Sunshine!'



## LEATHER CASES

The perfect camera deserves the perfect jacket: beautifully stitched leather cases for your Digital IXUS or PowerShot G-series.

Michiel Ottho - 'Jumping Croc'



### DCC-70

Stylish soft leather case. For Digital IXUS 960 IS/ Digital IXUS 950 IS/Digital IXUS 860 IS.



### DCC-60

Stylish soft leather case. For Digital IXUS 75 and Digital IXUS 70.



### SC-DC55A

Retro styled leather case. For PowerShot G9.



### DCC-600

Stylish soft leather case with space for additional memory card. For PowerShot G9.

## Water-resistant Housings

Canon's inspired range of underwater and all-weather cases are sure to quicken the pulse of photographers with a passion for the outdoors. From surfing to diving, skiing to snorkelling; Canon gives you the freedom to fully explore your outdoor passions.



### WP-DC21

Waterproof Case (40m). For PowerShot G9.



### WW-DC1

Waterproof Case Weight.

### WATERPROOF

With protection to a depth of up to 40 metres, Canon's waterproof cases are an exciting addition to any scuba diver or snorkeller's kit. Cases include anti-fog, double-glass lens windows<sup>1</sup> and a flash diffusion plate<sup>1</sup> to reduce the 'snow' effect caused by reflections off underwater particles. Big, robust coloured buttons allow easy operation even when wearing gloves.

<sup>1</sup> Depending on model

### COMPENSATION WEIGHTS

All divers know the importance of buoyancy compensation - the ability to adjust your weight underwater so that you neither rise to the surface nor sink to the bottom. A specially balanced and secure compensating weight system has been specifically designed to reduce the combined buoyancy of camera and case, so you and your camera are always operating at the same level.

## Conversion Lenses

A great benefit of digital photography is that the camera's LCD monitor shows exactly what the camera 'sees'. This opens the way for the use of conversion lenses, because you can see how additional lenses will affect the shot. Each lens in this exciting range is built with the exacting precision found in every Canon lens, to deliver superb quality as well as versatility.

### WIDE ANGLE CONVERTER LENSES

Wide angle conversion lenses expand your frame so you get more in the shot - perfect for group shots and landscapes. They also help create unconventional perspectives on every-day subjects, giving photographs a strong sense of separation between subject and background.



Get a better sense of space with wide angle lenses

### TELE CONVERTER LENSES

Tele converters bring distant subjects right up close, making them perfect for wildlife and sports photography. Use a tele converter lens to take portraits from a discreet distance and capture natural, un-self-conscious expressions.



Close in on the action with a tele converter lens

### CLOSE-UP CONVERTER LENSES

Close-up converters allow you to fill your frame with tiny objects, and to emphasise your subject with the shallow depth of field inherent with their use. Get right in close and capture the beauty of nature's miniature world: the patterned wing of a butterfly, the morning dew collected on spider's web, a flower petal's brilliant burst of colour.



Fill the frame with subject detail for greater impact with a close-up lens



# Digital Still Compact Cameras Specifications Chart



DIGITAL CAMERA		<b>PowerShot G9</b>	<b>PowerShot S5 IS</b>
IMAGE SENSOR	<b>Type</b>	1/1.7" CCD	1/2.5" CCD
	<b>Effective Pixels</b>	Approx. 12.1M	Approx. 8.0M
IMAGE PROCESSOR	<b>Type</b>	DIGIC III with iSAPS technology	DIGIC III with iSAPS technology
LENS	<b>Focal Length</b>	7.4 - 44.4mm (35mm equivalent: 35 - 210mm)	6.0 - 72.0mm (35mm equivalent: 36 - 432mm)
	<b>Zoom</b>	Optical 6x. Digital approx. 4x (with Digital Tele-Converter approx. 1.5x or 2.0x and Safety Zoom <sup>1)</sup> ) <sup>2</sup> Combined approx. 24x	Optical 12x. Digital approx. 4x (with Digital Tele-Converter approx. 1.6x or 2.0x and Safety Zoom <sup>1)</sup> ) <sup>2</sup> Combined approx. 48x
	<b>Maximum f/number</b>	f/2.8 - f/4.8	f/2.7 - f/3.5
	<b>Construction</b>	9 elements in 7 groups (1 double-sided aspherical element)	11 elements in 9 groups (1 aspherical element, 1 UD element)
	<b>Image Stabilisation</b>	YES (shift-type)	YES (shift-type)
FOCUSING	<b>Ultrasonic Motor (USM)</b>	—	YES, zoom
	<b>Type</b>	TTL	TTL
	<b>AF System/Points</b>	AI/AF (Face Detection / 9-point), 1-point AF (Any position is available, fixed centre or Face Select and Track)	Face Detection, 1-point AF (Any position is available or fixed centre)
EXPOSURE CONTROL	<b>AF Lock/AF Assist Beam</b>	On/Off Selectable / YES	On/Off Selectable / YES
	<b>Closest Focusing Distance</b>	1cm	0cm
	<b>Metering Modes</b>	Evaluative (linked to Face Detection AF frame), Centre-weighted average, Spot (centre or linked to Face Detection AF or FlexiZone AF frame)	Evaluative (linked to Face Detection AF frame), Centre-weighted average, Spot (centre or linked to Face Detection AF or FlexiZone AF frame)
SHUTTER	<b>AE Lock</b>	YES	YES
	<b>Exposure Compensation/AEB</b>	+/- 2 EV in 1/3 stop increments / 1/3 - 2 EV in 1/3 stop increments	+/- 2 EV in 1/3 stop increments / 1/3 - 2 EV in 1/3 stop increments
	<b>ISO Sensitivity<sup>3</sup></b>	AUTO, High ISO Auto, 80, 100, 200, 400, 800, 1600	AUTO, High ISO Auto, 80, 100, 200, 400, 800, 1600
WHITE BALANCE	<b>Settings</b>	Auto, Daylight, Cloudy, Tungsten, Fluorescent, Fluorescent H, Flash, Underwater, Custom1, Custom2	Auto, Daylight, Cloudy, Tungsten, Fluorescent, Fluorescent H, Flash, Custom
	<b>Viewfinder/Dioptr Correction</b>	Real-image zoom, optical viewfinder / YES	EVF (0.33" type), approx. 115,000 pixels / YES
VIEWFINDER	<b>Monitor/Coverage</b>	3.0" P-Si TFT, approx. 230,000 pixels / 100%	Vari-angle 2.5" Low temperature P-Si TFT, approx. 207,000 pixels / 100%
FLASH	<b>Modes</b>	Auto, Manual Flash On / Off	Auto, Manual Flash On / Off
	<b>Flash Exposure Lock</b>	YES	YES
	<b>Built-in Flash Range</b>	30cm - 4.0m (W) / 2.5m (T) (at ISO AUTO equivalent)	50cm - 5.2m (W) / 90cm - 4.0m (T) (at ISO AUTO equivalent)
	<b>External Flash</b>	E-TTL with EX series Speedlites <sup>4</sup> , Canon's High Power Flash HF-DC1	E-TTL with EX series Speedlites <sup>4</sup> , Canon's High Power Flash HF-DC1
SHOOTING	<b>Modes</b>	Auto, Program AE, Shutter priority AE, Aperture priority AE, Manual, Custom (2 modes), Stitch Assist, Movie, Special Scene (Portrait, Landscape, Night Scene, Sports, Night Snapshot, Kids & Pets, Indoor, Foliage, Snow, Beach, Fireworks, Aquarium, Underwater, ISO 3200 <sup>5</sup> , Color Accent, Color Swap)	Auto, Program AE, Shutter priority AE, Aperture priority AE, Manual, Custom, Portrait, Landscape, Night Snapshot, Sports, Stitch Assist, Movie, Special Scene (Indoor, Night Scene, Foliage, Snow, Beach, Fireworks, Aquarium, Color Accent, Color Swap), Super Macro
	<b>Photo Effects</b>	My Colors (My Colors Off, Vivid, Neutral, Sepia, Black & White, Positive Film, Lighter Skin Tone, Darker Skin Tone, Vivid Blue, Vivid Green, Vivid Red, Custom Color)	My Colors (My Colors Off, Vivid, Neutral, Sepia, Black & White, Positive Film, Lighter Skin Tone, Darker Skin Tone, Vivid Blue, Vivid Green, Vivid Red, Custom Color)
	<b>Drive Modes</b>	Single, Continuous, Self-Timer	Single, Continuous, Self-Timer
	<b>Continuous Shooting</b>	Approx. 1.5 fps <sup>6</sup> ; AF: Approx. 0.7 fps <sup>6</sup> ; LV: Approx. 0.8 fps <sup>6</sup> (until memory card becomes full) <sup>7</sup>	Approx. 1.5 fps <sup>6</sup> (until memory card becomes full) <sup>7</sup> ; AF/LV: Approx. 0.9 fps <sup>6</sup> (until memory card becomes full) <sup>7</sup>
RECORDING PIXELS / COMPRESSION	<b>Image Size</b>	(L)4000 x 3000, (M1)3264 x 2448, (M2)2592 x 1944, (M3)1600 x 1200, (S)640 x 480, (W)4000 x 2248. Resize in playback (M3, S, 320 x 240)	(L)3264 x 2448, (M1)2592 x 1944, (M2)2048 x 1536, (M3)1600 x 1200, (S)640 x 480, (W)3264 x 1832
	<b>Compression</b>	Superfine, Fine, Normal	Superfine, Fine, Normal
	<b>Movies</b>	(L)1024 x 768, 15 fps, (L2)640 x 480, 30 fps, (LP)640x480, 30 fps (M)320 x 240, 30 fps, (S)160 x 120, 15 fps (Time Lapse)640 x 480, 0.5/1 fps (Playback 15 fps)	(L)640 x 480, 30 fps, (LP)640 x 480, 30 fps, (M)320 x 240, 30/30 fps (S)160 x 120, 15 fps
	<b>Movie Length</b>	Up to 4GB or 1 hour (L1, L2 and M) <sup>7</sup> ; up to 3 mins (S) <sup>7</sup> ; up to 120 mins (Time Lapse) <sup>7</sup>	Up to 4GB or 1 hour <sup>7</sup>
FILE TYPES	<b>Still Image Type</b>	JPEG compression, (Exif 2.2 [Exif Print] compliant) / Design rule for Camera File system, RAW, Digital Print Order Format (DPOF) Version 1.1 compliant	JPEG compression, (Exif 2.2 [Exif Print] compliant) / Design rule for Camera File system, Digital Print Order Format (DPOF) Version 1.1 compliant
	<b>Movies</b>	AVI [Motion JPEG compression + WAVE (monaural)]	AVI [Motion JPEG compression + WAVE (stereo)]
	<b>Sound Files</b>	WAVE (monaural)	WAVE (stereo)
DIRECT PRINT	<b>Canon Printers</b>	Canon SELPHY Compact Photo Printers and Canon Inkjet Printers supporting PictBridge (ID Photo Print, Fixed Size Print and Movie Print supported on SELPHY CP & ES printers only)	Canon SELPHY Compact Photo Printers and Canon Inkjet Printers supporting PictBridge (ID Photo Print, Fixed Size Print and Movie Print supported on SELPHY CP & ES printers only)
	<b>PictBridge</b>	YES	YES
OTHER FEATURES	<b>Red-Eye Correction</b>	YES, in playback	YES, in playback
	<b>My Camera/My Category</b>	Start-up image and camera sounds customisation / Image tagging feature	Start-up image and camera sounds customisation / Image tagging feature
	<b>Sound Memo</b>	Up to 60 sec. per image	Up to 60 sec. per image
	<b>Intelligent Orientation Sensor</b>	YES	YES
	<b>Histogram</b>	YES, live histogram	YES, live histogram
	<b>Playback Zoom</b>	Approx. 2x - 10x	Approx. 2x - 10x
	<b>Self Timer</b>	Approx. 2 or 10 sec. or Custom	Approx. 2 or 10 sec. or Custom
	<b>Menu Languages</b>	25 languages	25 languages
INTERFACE	<b>Computer/Other</b>	USB 2.0 Hi-Speed (Mini-B, PTP) / A/V output (PAL/NTSC)	USB 2.0 Hi-Speed (Mini-B, PTP) / A/V output (PAL/NTSC)
MEMORY CARD	<b>Type</b>	SD, SDHC, MMC, MMCplus, HC MMCplus, 32MB memory card supplied	Secure Digital (SD) Card, Secure Digital High-Capacity (SDHC) Card or MultiMediaCard (MMC), 32MB memory card supplied
SUPPORTED OPERATING SYSTEM	<b>PC</b>	Windows® 2000 SP4 / XP / XP SP1-2 / Vista	Windows® 2000 SP4 / XP SP1-2 / Vista
	<b>Macintosh</b>	Mac OS X v10.3 - 10.4	Mac OS X v10.3 - 10.4
SOFTWARE	<b>Browsing &amp; Printing</b>	ZoomBrowser EX / ImageBrowser	ZoomBrowser EX / ImageBrowser
	<b>Other</b>	PhotoStitch, RemoteCapture	PhotoStitch, RemoteCapture
	<b>Drivers</b>	TWAIN (2000)	TWAIN (2000)
POWER SOURCE	<b>Batteries</b>	Rechargeable Li-ion Battery NB-2LH/NB-2L (NB-2LH battery and charger supplied)	4x Size-AA Alkaline or NiMH Batteries (NB4-300) (Alkalines supplied)
	<b>A/C Power Supply</b>	Optional, AC Adapter Kit ACK-DC20	Optional, Power adapter CA-P5700
ACCESSORIES		See pages 60 - 65 for full accessories	See pages 60 - 65 for full accessories
PHYSICAL SPECIFICATIONS	<b>Operating Environment</b>	0 - 40°C, 10 - 90% humidity	0 - 40°C, 10 - 90% humidity
	<b>Dimensions (W x H x D)</b>	106.4 x 71.9 x 42.5 mm (excluding protrusions)	117.0 x 80.0 x 77.7 mm (excluding viewfinder-eyepiece & protrusions)
	<b>Weight (body only)</b>	Approx. 320g	Approx. 450g

# Digital Still Compact Cameras Specifications Chart



DIGITAL CAMERA		<b>PowerShot SX100 IS</b>	<b>PowerShot A650 IS</b>
IMAGE SENSOR	<b>Type</b>	1/2.5" CCD	1/1.7" CCD
	<b>Effective Pixels</b>	Approx. 8.0M	Approx. 12.1M
IMAGE PROCESSOR	<b>Type</b>	DIGIC III with iSAPS technology	DIGIC III with iSAPS technology
LENS	<b>Focal Length</b>	6.0 - 60.0mm (35mm equivalent: 36 - 360mm)	7.4 - 44.4mm (35mm equivalent: 35 - 210mm)
	<b>Zoom</b>	Optical 10x. Digital approx. 4x (with Digital Tele-Converter approx. 1.6x or 2.0x and Safety Zoom <sup>1)</sup> ) <sup>2</sup> Combined approx. 40x	Optical 6x. Digital approx. 4x (with Digital Tele-Converter approx. 1.5x or 2.0x and Safety Zoom <sup>1)</sup> ) <sup>2</sup> Combined approx. 24x
	<b>Maximum f/number</b>	f/2.8 - f/4.3	f/2.8 - f/4.8
	<b>Construction</b>	10 elements in 9 groups (1 aspherical element)	9 elements in 7 groups (including 1 double-sided aspherical element)
	<b>Image Stabilisation</b>	YES (shift-type)	YES (shift-type)
FOCUSING	<b>Ultrasonic Motor (USM)</b>	—	—
	<b>Type</b>	TTL	TTL
	<b>AF System/Points</b>	Face Detection, 1-point AF (fixed to centre or Face Select and Track)	AI/AF (Face Detection / 9-point), 1-point AF (Any position is available or fixed centre)
EXPOSURE CONTROL	<b>AF Lock/AF Assist Beam</b>	On/Off Selectable / YES	On/Off Selectable / YES
	<b>Closest Focusing Distance</b>	1cm	1cm
	<b>Metering Modes</b>	Evaluative (linked to Face Detection AF frame), Centre-weighted average, Spot (Centre)	Evaluative (linked to Face Detection AF frame), Centre-weighted average, Spot (Centre)
SHUTTER	<b>AE Lock</b>	On / Off Selectable	On / Off Selectable
	<b>Exposure Compensation/AEB</b>	+/- 2 EV in 1/3 stop increments	+/- 2 EV in 1/3 stop increments
	<b>ISO Sensitivity<sup>3</sup></b>	AUTO, High ISO Auto, 80, 100, 200, 400, 800, 1600	AUTO, High ISO Auto, 80, 100, 200, 400, 800, 1600
WHITE BALANCE	<b>Settings</b>	Auto, Daylight, Cloudy, Tungsten, Fluorescent, Fluorescent H, Custom	Auto, Daylight, Cloudy, Tungsten, Fluorescent, Fluorescent H, Underwater, Custom
	<b>Viewfinder/Dioptr Correction</b>	—	Real-image zoom, optical viewfinder
VIEWFINDER	<b>Monitor/Coverage</b>	2.5" P-Si TFT, approx. 172,000 pixels / 100%	Vari-angle 2.5" P-Si TFT, approx. 173,000 pixels / 100%
FLASH	<b>Modes</b>	Auto, Manual Flash On / Off	Auto, Manual Flash On / Off
	<b>Flash Exposure Lock</b>	YES	YES
	<b>Built-in Flash Range</b>	50cm - 3.0m (W) / 50cm - 2.0m (T) (at ISO AUTO equivalent)	50cm - 3.5m (W) / 2.0m (T) (at ISO AUTO equivalent)
	<b>External Flash</b>	Canon's High Power Flash HF-DC1	Canon's High Power Flash HF-DC1
SHOOTING	<b>Modes</b>	Auto, Program AE, Shutter priority AE, Aperture priority AE, Manual, Portrait, Landscape, Night Snapshot, Kids & Pets, Stitch Assist, Movie, Special Scene (Night Scene, Indoor, Foliage, Snow, Beach, Fireworks, Aquarium)	Auto, Program AE, Shutter priority AE, Aperture priority AE, Manual, Custom, Portrait, Landscape, Night Snapshot, Kids & Pets, Stitch Assist, Movie, Special Scene (Night Scene, Indoor, Foliage, Snow, Beach, Fireworks, Aquarium, Underwater, ISO 3200 <sup>5</sup> )
	<b>Photo Effects</b>	My Colors (My Colors Off, Vivid, Neutral, Sepia, Black & White, Custom Color (limited))	My Colors (My Colors Off, Vivid, Neutral, Sepia, Black & White, Custom Color (limited))
	<b>Drive Modes</b>	Single, Continuous, Self-Timer	Single, Continuous, Self-Timer
	<b>Continuous Shooting</b>	Approx. 1.3 fps <sup>6</sup> ; AF/LV: Approx. 0.8 fps <sup>6</sup> (until memory card becomes full) <sup>7</sup>	Approx. 1.2 fps <sup>6</sup> (until memory card becomes full) <sup>7</sup>
RECORDING PIXELS / COMPRESSION	<b>Image Size</b>	(L)3264 x 2448, (M1)2592 x 1944, (M2)2048 x 1536, (M3, Postcard Date Imprint)1600 x 1200, (S)640 x 480, (W)3264 x 1832. Resize in playback (M3, S, 320 x 240)	(L)4000 x 3000, (M1)3264 x 2448, (M2)2592 x 1944, (M3, Postcard Date Imprint)1600 x 1200, (S)640 x 480, (W)4000 x 2248. Resize in playback (M3, S, 320 x 240)
	<b>Compression</b>	Superfine, Fine, Normal	Superfine, Fine, Normal
	<b>Movies</b>	(L)640 x 480, 30 fps, (LP)640 x 480, 30 fps, (M)320 x 240, 30 fps (S)160 x 120, 15 fps	(L)640 x 480, 30 fps/30 fps(LP), (M)320 x 240, 30 fps, (S)160 x 120, 15 fps
	<b>Movie Length</b>	Up to 4GB or 1 hour (L, LP, M) <sup>7</sup> ; up to 3 mins (S) <sup>7</sup>	Up to 4GB or 1 hour (L and M) <sup>7</sup> ; up to 3 mins (S) <sup>7</sup>
FILE TYPES	<b>Still Image Type</b>	JPEG compression, (Exif 2.2 [Exif Print] compliant) / Design rule for Camera File system, Digital Print Order Format (DPOF) Version 1.1 compliant	JPEG compression, (Exif 2.2 [Exif Print] compliant) / Design rule for Camera File system, Digital Print Order Format (DPOF) Version 1.1 compliant
	<b>Movies</b>	AVI [Motion JPEG compression + WAVE (monaural)]	AVI [Motion JPEG compression + WAVE (monaural)]
	<b>Sound Files</b>	WAVE (monaural)	WAVE (monaural)
DIRECT PRINT	<b>Canon Printers</b>	Canon SELPHY Compact Photo Printers and Canon Inkjet Printers supporting PictBridge (ID Photo Print, Fixed Size Print and Movie Print supported on SELPHY CP & ES printers only)	Canon SELPHY Compact Photo Printers and Canon Inkjet Printers supporting PictBridge (ID Photo Print, Fixed Size Print and Movie Print supported on SELPHY CP & ES printers only)
	<b>PictBridge</b>	YES	YES
OTHER FEATURES	<b>Red-Eye Correction</b>	YES, in playback	YES, in playback
	<b>My Camera/My Category</b>	Start-up image and camera sounds customisation (Pre-installed items only) / —	Start-up image and camera sounds customisation (Pre-installed items only) / —
	<b>Sound Memo</b>	Up to 60 sec. per image	Up to 60 sec. per image
	<b>Intelligent Orientation Sensor</b>	YES	YES
	<b>Histogram</b>	YES	YES
	<b>Playback Zoom</b>	Approx. 2x - 10x	Approx. 2x - 10x
	<b>Self Timer</b>	Approx. 2 or 10 sec. or Custom	Approx. 2 or 10 sec. or Custom
	<b>Menu Languages</b>	25 languages	25 languages
INTERFACE	<b>Computer/Other</b>	USB 2.0 Hi-Speed (Mini-B, MTP, PTP) / A/V output (PAL/NTSC)	USB 2.0 Hi-Speed (Mini-B, MTP, PTP) / A/V output (PAL/NTSC)
MEMORY CARD	<b>Type</b>	SD, SDHC, MMC, MMCplus, HC MMCplus, 32MB memory card supplied	SD, SDHC, MMC, MMCplus, HC MMCplus, 32MB memory card supplied
SUPPORTED OPERATING SYSTEM	<b>PC</b>	Windows® 2000 SP4 / XP SP2 / Vista	Windows 2000® SP4 / XP SP2 / Vista
	<b>Macintosh</b>	Mac OS X v10.3 - 10.4	Mac OS X v10.3 - 10.4
SOFTWARE	<b>Browsing &amp; Printing</b>	ZoomBrowser EX / ImageBrowser	ZoomBrowser EX / ImageBrowser
	<b>Other</b>	PhotoStitch	PhotoStitch
	<b>Drivers</b>	TWAIN (2000)	TWAIN (2000)
POWER SOURCE	<b>Batteries</b>	2x Size-AA Alkaline or NiMH Batteries (NB4-300) (Alkalines supplied)	4x Size-AA Alkaline or NiMH Batteries (NB4-300) (Alkalines supplied)
	<b>A/C Power Supply</b>	Optional, AC Adapter Kit ACK-800	Optional, AC Adapter Kit ACK-600
ACCESSORIES		See pages 60 - 65 for full accessories	See pages 60 - 65 for full accessories
PHYSICAL SPECIFICATIONS	<b>Operating Environment</b>	0 - 40°C, 10 - 90% humidity	0 - 40°C, 10 - 90% humidity
	<b>Dimensions (W x H x D)</b>	108.7 x 71.4 x 46.7mm (excluding protrusions)	112.1 x 67.8 x 56.2mm (excluding protrusions)
	<b>Weight (body only)</b>	Approx. 266g	Approx. 300g

# Digital Still Compact Cameras Specifications Chart



DIGITAL CAMERA		<b>PowerShot A720 IS</b>	<b>PowerShot A570 IS</b>
IMAGE SENSOR	<b>Type</b>	1/2.5" CCD	1/2.5" CCD
	<b>Effective Pixels</b>	Approx. 8.0M	Approx. 7.1M
IMAGE PROCESSOR	<b>Type</b>	DIGIC III with iSAPS technology	DIGIC III with iSAPS technology
LENS	<b>Focal Length</b>	5.8 - 34.8mm (35mm equivalent: 35 - 210mm)	5.8 - 23.2mm (35mm equivalent: 35 - 140mm)
	<b>Zoom</b>	Optical 6x. Digital approx. 4x (with Digital Tele-Converter approx. 1.6x or 2.0x and Safety Zoom 1) <sup>2</sup> Combined approx. 24x	Optical 4x. Digital approx. 4x <sup>2</sup> (with Digital Tele-Converter approx. 1.5x or 1.9x and Safety Zoom 1) <sup>2</sup> Combined approx. 16x
	<b>Maximum f/number</b>	f/2.8 - f/4.8	f/2.6 - f/5.5
	<b>Construction</b>	9 elements in 7 groups (including 1 double-sided aspherical element)	7 elements in 5 groups (2 aspherical elements)
	<b>Image Stabilisation</b>	YES (shift-type)	YES (shift-type)
FOCUSING	<b>Type</b>	TTL	TTL
	<b>AF System/Points</b>	AI/AF (Face Detection / 9-point), 1-point AF (Any position is available or fixed centre)	AI/AF (Face Detection / 9-point), 1-point AF (fixed centre)
	<b>AF Lock/AF Assist Beam</b>	On/Off Selectable / YES	On/Off Selectable / YES
	<b>Closest Focusing Distance</b>	1cm	5cm
EXPOSURE CONTROL	<b>Metering Modes</b>	Evaluative (linked to Face Detection AF frame), Centre-weighted average, Spot (centre or linked to Face Detection AF or FlexiZone AF frame)	Evaluative, Centre-weighted average, Spot (centre or linked to Face Detection AF frame)
	<b>AE Lock</b>	On / Off Selectable	Locked when shutter button is pressed half way
	<b>Exposure Compensation/AEB</b>	+/- 2 EV in 1/3 stop increments / -	+/- 2 EV in 1/3 stop increments / -
	<b>ISO Sensitivity<sup>3</sup></b>	AUTO, High ISO Auto, 80, 100, 200, 400, 800, 1600	AUTO, High ISO Auto, 80, 100, 200, 400, 800, 1600
SHUTTER	<b>Speed</b>	15 - 1/2,000 sec. (Available shutter speeds vary depending on the shooting mode)	15 - 1/2,000 sec. (Available shutter speeds vary depending on the shooting mode)
WHITE BALANCE	<b>Settings</b>	Auto, Daylight, Cloudy, Tungsten, Fluorescent, Fluorescent H, Underwater, Custom	Auto, Daylight, Cloudy, Tungsten, Fluorescent, Fluorescent H, Underwater, Custom
VIEWFINDER	<b>Viewfinder</b>	Real-image zoom, optical viewfinder	Real-image zoom, optical viewfinder
LCD MONITOR	<b>Monitor/Coverage</b>	2.5" Amorphous silicon TFT, approx. 115,000 pixels	2.5" Amorphous TFT, approx. 115,000 pixels / 100%
FLASH	<b>Modes</b>	Auto, Manual Flash On / Off	Auto, Manual Flash On / Off
	<b>Flash Exposure Lock</b>	YES	-
	<b>Built-in Flash Range</b>	30cm - 3.5m (W) / 55cm - 2.5m (T) (at ISO AUTO equivalent)	45cm - 3.5m (W) / 2.2m (T) (at ISO AUTO equivalent)
	<b>External Flash</b>	Canon's High Power Flash HF-DC1	Canon's High Power Flash HF-DC1
SHOOTING	<b>Modes</b>	Auto, Program AE, Shutter priority AE, Aperture priority AE, Manual, Portrait, Landscape, Night Snapshot, Kids & Pets, Indoor, Stitch Assist, Movie, Special Scene (Night Scene, Foliage, Snow, Beach, Fireworks, Aquarium, Underwater)	Auto, Program AE, Shutter priority AE, Aperture priority AE, Manual, Portrait, Landscape, Night Snapshot, Kids & Pets, Indoor, Stitch Assist, Movie, Special Scene (Night Scene, Foliage, Snow, Beach, Fireworks, Aquarium, Underwater)
	<b>Photo Effects</b>	My Colors (My Colors Off, Vivid, Neutral, Sepia, Black & White, Custom Color (limited))	My Colors (My Colors Off, Vivid, Neutral, Sepia, Black & White, Custom Color (limited))
	<b>Drive Modes</b>	Single, Continuous, Self-Timer	Single, Continuous, Self-Timer
	<b>Continuous Shooting</b>	Approx. 1.3 fps <sup>4</sup> (until memory card becomes full) <sup>7</sup>	Approx. 1.7 fps <sup>4</sup> (until memory card becomes full) <sup>7</sup>
RECORDING PIXELS / COMPRESSION	<b>Image Size</b>	(L)3264 x 2448, (M1)2592 x 1944, (M2)2048 x 1536, (M3, Postcard Date Imprint)1600 x 1200, (S)640 x 480, (W)3264 x 1832. Resize in playback (M3, S, 320 x 240)	(L)3072 x 2304, (M1)2592 x 1944, (M2)2048 x 1536, (M3)1600 x 1200, (S)640 x 480, (W)3072 x 1728, (Postcard Date Imprint)1600 x 1200
	<b>Compression</b>	Superfine, Fine, Normal	Superfine, Fine, Normal
	<b>Movies</b>	(L)640 x 480, 30 fps/30 fps(LP), (M)320 x 240, 30 fps, (S)160 x 120, 15 fps	(L)640 x 480, (M)320 x 240, 60/30/15fps, (S)160 x 120, 15 fps
	<b>Movie Length</b>	Up to 4GB or 1 hour (L and M) <sup>7</sup> , up to 3 mins (S) <sup>7</sup>	Up to 4GB or 1 hour (L and M, 30/15 fps), up to 1 min (M, 60 fps), up to 3 min (S) <sup>7</sup>
FILE TYPES	<b>Still Image Type</b>	JPEG compression, (Exif 2.2 [Exif Print] compliant) / Design rule for Camera File system, Digital Print Order Format [DPOF] Version 1.1 compliant	JPEG compression, (Exif 2.2 [Exif Print] compliant) / Design rule for Camera File system, Digital Print Order Format [DPOF] Version 1.1 compliant
	<b>Movies</b>	AVI [Motion JPEG compression + WAVE (monaural)]	AVI [Motion JPEG compression + WAVE (monaural)]
	<b>Sound Files</b>	WAVE (monaural)	WAVE (monaural)
DIRECT PRINT	<b>Canon Printers</b>	Canon SELPHY Compact Photo Printers and Canon Inkjet Printers supporting PictBridge (ID Photo Print, Fixed Size Print and Movie Print supported on SELPHY CP & ES printers only)	Canon SELPHY Compact Photo Printers and Canon Inkjet Printers supporting PictBridge (ID Photo Print, Fixed Size Print and Movie Print supported on SELPHY CP & ES printers only)
	<b>PictBridge</b>	YES	YES
OTHER FEATURES	<b>Red-Eye Correction</b>	YES, in playback	YES, in playback
	<b>My Camera/My Category</b>	Start-up image and camera sounds customisation (Pre-Installed items only) / -	-
	<b>Sound Memo</b>	Up to 60 sec. per image	Up to 60 sec. per image
	<b>Intelligent Orientation Sensor</b>	YES	YES
	<b>Histogram</b>	YES	YES
	<b>Playback Zoom</b>	Approx. 2x - 10x	Approx. 2x - 10x
	<b>Self Timer</b>	Approx. 2 or 10 sec. or Custom	Approx. 2 or 10 sec. or Custom
	<b>Menu Languages</b>	25 languages	25 languages
INTERFACE	<b>Computer/Other</b>	USB 2.0 Hi-Speed (Mini-B, MTP, PTP) / A/V output (PAL/NTSC)	USB 2.0 Hi-Speed (Mini-B, MTP, PTP) / A/V output (PAL/NTSC)
MEMORY CARD	<b>Type</b>	SD, SDHC, MMC, MMCplus, HC MMCplus, 16MB memory card supplied	Secure Digital (SD) Card or Secure Digital High-Capacity (SDHC) Card or MultiMediaCard (MMC), 16MB Memory Card supplied
SUPPORTED OPERATING SYSTEM	<b>PC</b>	Windows® 2000 SP4 / XP SP2 / Vista	Windows® 2000 SP4 / XP / XP SP1-2 / Vista
	<b>Macintosh</b>	Mac OS X v10.3 - 10.4	Mac OS X v10.3 - 10.4
SOFTWARE	<b>Browsing &amp; Printing</b>	ZoomBrowser EX / ImageBrowser	ZoomBrowser EX / ImageBrowser
	<b>Other Drivers</b>	PhotoStitch TWAIN (2000)	PhotoStitch TWAIN (2000)
POWER SOURCE	<b>Batteries</b>	2x Size-AA Alkaline or NiMH Batteries (NB4-300) (Alkalines supplied)	2x Size-AA Alkaline or NiMH Batteries (NB4-300) (Alkalines supplied)
	<b>A/C Power Supply</b>	Optional, AC Adapter Kit ACK-800	Optional, AC Adapter Kit ACK-800
ACCESSORIES		See pages 60 - 65 for full accessories	See pages 60 - 65 for full accessories
PHYSICAL SPECIFICATIONS	<b>Operating Environment</b>	0 - 40°C, 10 - 90% humidity	0 - 40°C, 10 - 90% humidity
	<b>Dimensions (W x H x D)</b>	97.3 x 67.0 x 41.9mm (excluding protrusions)	89.5 x 64.3 x 42.8mm
	<b>Weight (body only)</b>	Approx. 200g	Approx. 175g

# Digital Still Compact Cameras Specifications Chart



DIGITAL CAMERA		<b>PowerShot A560/A550</b>	<b>PowerShot A460</b>
IMAGE SENSOR	<b>Type</b>	1/2.5" CCD	1/3" CCD
	<b>Effective Pixels</b>	Approx. 7.1m	Approx. 5.0M
IMAGE PROCESSOR	<b>Type</b>	DIGIC III with iSAPS technology (A560) DIGIC II with iSAPS technology (A550)	DIGIC I with iSAPS technology
LENS	<b>Focal Length</b>	5.8 - 23.2mm (35mm equivalent: 35 - 140mm)	5.4 - 21.6mm (35mm equivalent: 38 - 152mm)
	<b>Zoom</b>	Optical 4x Digital approx. 4x <sup>2</sup> (with Digital Tele-Converter approx. 1.5x or 1.9x and Safety Zoom 1) <sup>2</sup> . Combined approx. 16x	Optical 4x. Digital approx. 4x (with Safety Zoom 1) <sup>1</sup> (still images), 2x (movies). Combined approx. 16x (still images), 8.1x (movies) <sup>2</sup>
	<b>Maximum f/number</b>	f/2.6 - f/5.5	f/2.8 - f/5.8
	<b>Construction</b>	7 elements in 5 groups (2 aspherical elements)	7 elements in 6 groups (1 aspherical element)
	<b>Image Stabilisation</b>	-	-
FOCUSING	<b>Type</b>	TTL	TTL
	<b>AF System/Points</b>	AI/AF (Face Detection / 9-point), 1-point AF (fixed centre) (A560) 9-point AI/AF, 1-point AF (fixed centre) (A550)	5-point AI/AF, 1-point AF (fixed centre)
	<b>AF Lock/AF Assist Beam</b>	On/Off Selectable / YES	Locked when shutter button is pressed half way / YES
	<b>Closest Focusing Distance</b>	5cm	1cm
EXPOSURE CONTROL	<b>Metering Modes</b>	Evaluative, Centre-weighted average, Spot (centre or linked to Face Detection AF frame) (A560) Evaluative, Centre-weighted average, Spot (centre) (A550)	Evaluative, Centre-weighted average, Spot (centre)
	<b>AE Lock</b>	On / Off Selectable	Locked when shutter button is pressed half way
	<b>Exposure Compensation/AEB</b>	+/- 2 EV in 1/3 stop increments / -	+/- 2 EV in 1/3 stop increments / -
	<b>ISO Sensitivity<sup>3</sup></b>	AUTO, High ISO Auto, 80, 100, 200, 400, 800, 1600 (1600 A560 only)	AUTO, 80, 100, 200, 400
SHUTTER	<b>Speed</b>	15 - 1/2,000 sec. (Available shutter speeds vary depending on the shooting mode)	15 - 1/2,000 sec. (Available shutter speeds vary depending on the shooting mode)
WHITE BALANCE	<b>Settings</b>	Auto, Daylight, Cloudy, Tungsten, Fluorescent, Fluorescent H, Custom	Auto, Daylight, Cloudy, Tungsten, Fluorescent, Fluorescent H, Custom
VIEWFINDER	<b>Viewfinder</b>	Real-image zoom, optical viewfinder	Real-image zoom, optical viewfinder
LCD MONITOR	<b>Monitor/Coverage</b>	2.5" amorphous silicon TFT, approx. 115,000 pixels (A560) 2.0" P-Si TFT, approx. 86,000 pixels (A550) / 100%	2.0" P-Si TFT, approx. 86,000 pixels / 100%
FLASH	<b>Modes</b>	Auto, Manual Flash On / Off	Auto, Manual Flash On / Off
	<b>Flash Exposure Lock</b>	YES	-
	<b>Built-in Flash Range</b>	45cm - 3.5m (W) / 2.2m (T) (at ISO AUTO equivalent)	47cm - 3.0m (W) / 2.0m (T) (at ISO AUTO equivalent)
	<b>External Flash</b>	Canon's High Power Flash HF-DC1	Canon's High Power Flash HF-DC1
SHOOTING	<b>Modes</b>	Auto, Manual, Portrait, Landscape, Night Snapshot, Indoor, Kids & Pets, Movie, Special Scene (Foliage, Snow, Beach, Fireworks, Night Scene, Aquarium) (Aquarium A560 only)	Auto, Manual, Super Macro, Movie, Special Scene (Portrait, Night Snapshot, Kids & Pets, Indoor, Foliage, Snow, Beach, Fireworks)
	<b>Photo Effects</b>	My Colors (My Colors Off, Vivid, Neutral, Sepia, Black & White, Custom Color (limited))	My Colors (My Colors Off, Vivid, Neutral, Sepia, Black & White, Custom Color (limited))
	<b>Drive Modes</b>	Single, Self-Timer	Single, Self-Timer
	<b>Continuous Shooting</b>	Approx. 1.7 fps <sup>4</sup> (until the memory card is full) <sup>7</sup> (A560), Approx. 1.4 fps <sup>4</sup> (until the memory card is full) <sup>7</sup> (A550)	Approx. 1.5 fps <sup>4</sup> (until the memory card is full) <sup>7</sup>
RECORDING PIXELS / COMPRESSION	<b>Image Size</b>	(L)3072 x 2304, (M1)2592 x 1944, (M2)2048 x 1536, (M3)1600 x 1200, (S)640 x 480, (W)3072 x 1728, (Postcard Date Imprint)1600 x 1200	(L)2592 x 1944, (M1)2048 x 1536, (M2)1600 x 1200, (S)640 x 480, (W)2592 x 1456, (Postcard Date Imprint)1600 x 1200
	<b>Compression</b>	Superfine, Fine, Normal	Superfine, Fine, Normal
	<b>Movies</b>	(L)640 x 480, 30/15 fps, (M)320 x 240, 60/30/15 fps, (S)160 x 120, 15 fps	(L)640 x 480, 10 fps (M)320 x 240, 30 fps, (S)160 x 120, 15 fps
	<b>Movie Length</b>	Up to 4GB (A560) / up to 1GB (A550) or 1 hour (L and M, 30/15 fps), up to 1 min (M, 60 fps), up to 3 min (S) <sup>7</sup>	Up to 1GB or 1 hour (L and M), up to 3 min (S) <sup>7</sup>
FILE TYPES	<b>Still Image Type</b>	JPEG compression, (Exif 2.2 [Exif Print] compliant) / Design rule for Camera File system, Digital Print Order Format [DPOF] Version 1.1 compliant	JPEG compression, (Exif 2.2 [Exif Print] compliant) / Design rule for Camera File system, Digital Print Order Format [DPOF] Version 1.1 compliant
	<b>Movies</b>	AVI [Motion JPEG compression + WAVE (monaural)]	AVI [Motion JPEG compression]
	<b>Sound Files</b>	WAVE (monaural)	WAVE (monaural)
DIRECT PRINT	<b>Canon Printers</b>	Canon SELPHY Compact Photo Printers and Canon Inkjet Printers supporting PictBridge (ID Photo Print, Fixed Size Print and Movie Print supported on SELPHY CP & ES printers only)	Canon SELPHY Compact Photo Printers and Canon Inkjet Printers supporting PictBridge (ID Photo Print, Fixed Size Print and Movie Print supported on SELPHY CP & ES printers only)
	<b>PictBridge</b>	YES	YES
OTHER FEATURES	<b>Red-Eye Correction</b>	YES, in playback (A560 only)	-
	<b>My Camera/My Category</b>	-	-
	<b>Sound Memo</b>	Up to 60 sec. per image	YES
	<b>Intelligent Orientation Sensor</b>	YES	-
	<b>Histogram</b>	YES	-
	<b>Playback Zoom</b>	Approx. 2x - 10x	Approx. 2x - 10x
	<b>Self Timer</b>	Approx. 2 or 10 sec. or Custom	Approx. 2 or 10 sec. or Custom
	<b>Menu Languages</b>	25 languages	25 languages
INTERFACE	<b>Computer/Other</b>	USB 2.0 Hi-Speed (Mini-B, MTP, PTP) / A/V output (PAL/NTSC)	USB (Mini-B, MTP, PTP) / A/V output (PAL/NTSC)
MEMORY CARD	<b>Type</b>	Secure Digital (SD) Card or Secure Digital High-Capacity (SDHC) Card or MultiMediaCard (MMC), 16MB Memory Card supplied	Secure Digital (SD) Card or Secure Digital High-Capacity (SDHC) Card or MultiMediaCard (MMC), 16MB Memory Card supplied
SUPPORTED OPERATING SYSTEM	<b>PC</b>	Windows® 2000 SP4 / XP / XP SP1-2 / Vista	Windows® 2000 SP4 / XP / XP SP1-2 / Vista
	<b>Macintosh</b>	Mac OS X v10.3 - 10.4	Mac OS X v10.3 - 10.4
SOFTWARE	<b>Browsing &amp; Printing</b>	ZoomBrowser EX / ImageBrowser	ZoomBrowser EX / ImageBrowser
	<b>Other Drivers</b>	PhotoStitch TWAIN (2000)	PhotoStitch TWAIN (2000)
POWER SOURCE	<b>Batteries</b>	2x Size-AA Alkaline or NiMH Batteries (NB4-300) (Alkalines supplied)	2x Size-AA Alkaline or NiMH Batteries (NB4-300) (Alkalines supplied)
	<b>A/C Power Supply</b>	Optional, AC Adapter Kit ACK-800	Optional, AC Adapter Kit ACK-800
ACCESSORIES		See pages 60 - 65 for full accessories	See pages 60 - 65 for full accessories
PHYSICAL SPECIFICATIONS	<b>Operating Environment</b>	0 - 40°C, 10 - 90% humidity	0 - 40°C, 10 - 90% humidity
	<b>Dimensions (W x H x D)</b>	91.2 x 64.0 x 43.1mm	106 x 51.8 x 40.2mm
	<b>Weight (body only)</b>	Approx. 165g (A560) / Approx. 160g (A550)	Approx. 165g

## Digital Still Compact Cameras Specifications Chart



DIGITAL CAMERA		<b>Digital IXUS 960 IS</b>	<b>Digital IXUS 950 IS</b>
IMAGE SENSOR	Type	1/1.7" CCD	1/2.5" CCD
	Effective Pixels	Approx. 12.1M	Approx. 8.0M
IMAGE PROCESSOR	Type	DIGIC III with ISAPS technology	DIGIC III with ISAPS technology
	LENS	<b>Focal Length</b> 7.7 - 28.5mm (35mm equivalent: 36 - 133mm)	<b>Focal Length</b> 5.8 - 23.2mm (35mm equivalent: 35 - 140mm)
LENS	<b>Zoom</b>	Optical 3.7x Digital approx. 4x (with Digital Tele-Converter approx. 1.5x or 2.0x and Safety Zoom 1) <sup>2</sup> Combined approx. 15x	Optical 4x Digital approx. 4x (with Digital Tele-Converter approx. 1.6x or 2.0x and Safety Zoom 1) <sup>2</sup> Combined approx. 16x
	<b>Maximum f/number</b>	f/2.8 - f/5.8	f/2.8 - f/5.5
	<b>Construction</b>	7 elements in 5 groups (2 aspherical elements including 1 double-sided UA element)	7 elements in 5 groups (2 aspherical elements, including 1 UA element)
	<b>Image Stabilisation</b>	YES (shift-type)	YES (shift-type)
FOCUSING	Type	TTL	TTL
	<b>AF System/Points</b>	AI AF (Face Detection / 9-point), 1-point AF (fixed centre)	AI AF (Face Detection / 9-point), 1-point AF (fixed centre)
	<b>AF Lock/AF Assist Beam</b>	On/Off Selectable / YES	On/Off Selectable / YES
	<b>Closest Focusing Distance</b>	5cm	2cm
EXPOSURE CONTROL	<b>Metering Modes</b>	Evaluative (linked to Face Detection AF frame), Centre-weighted average, Spot (centre)	Evaluative (linked to Face Detection AF frame), Centre-weighted average, Spot (centre)
	<b>AE Lock</b>	On / Off Selectable	On / Off Selectable
	<b>Exposure Compensation/AEB</b>	+/- 2 EV in 1/3 stop increments / —	+/- 2 EV in 1/3 stop increments / —
	<b>ISO Sensitivity<sup>3</sup></b>	AUTO, High ISO Auto, 80, 100, 200, 400, 800, 1600	AUTO, High ISO Auto, 80, 100, 200, 400, 800, 1600
SHUTTER	<b>Speed</b>	15 - 1/1,600 sec. (Shutter speeds of 1 sec. and more available in Long Shutter Mode only)	15 - 1/1,600 sec. (Shutter speeds of 1 sec. and more available in Long Shutter Mode only)
	<b>Settings</b>	Auto, Daylight, Cloudy, Tungsten, Fluorescent, Fluorescent H, Custom	Auto, Daylight, Cloudy, Tungsten, Fluorescent, Fluorescent H, Custom
WHITE BALANCE	<b>Settings</b>	Auto, Daylight, Cloudy, Tungsten, Fluorescent, Fluorescent H, Custom	Auto, Daylight, Cloudy, Tungsten, Fluorescent, Fluorescent H, Custom
VIEWFINDER	<b>Viewfinder</b>	Real-image zoom, optical viewfinder	Real-image zoom, optical viewfinder
LCD MONITOR	<b>Monitor/Coverage</b>	2.5" P-Si TFT, approx. 230,000 pixels / 100%	2.5" P-Si TFT, approx. 230,000 pixels / 100%
FLASH	<b>Modes</b>	Auto, Manual Flash On / Off	Auto, Manual Flash On / Off
	<b>Flash Exposure Lock</b>	YES	YES
	<b>Built-in Flash Range</b>	50cm - 4.6m (W) / 2.4m (T) (at ISO AUTO equivalent)	50cm - 3.5m (W) / 2.0m (T) (at ISO AUTO equivalent)
	<b>External Flash</b>	Canon's High Power Flash HF-DC1	Canon's High Power Flash HF-DC1
SHOOTING	<b>Modes</b>	Auto, Manual, Digital Macro, Color Accent, Color Swap, Stitch Assist, Movie, Special Scene (Portrait, Night Snapshot, Kids & Pets, Indoor, Foliage, Snow, Beach, Fireworks, Aquarium, Underwater, ISO 3200 <sup>3</sup> )	Auto, Manual, Digital Macro, Color Accent, Color Swap, Stitch Assist, Movie, Special Scene (Portrait, Night Snapshot, Kids & Pets, Indoor, Creative Light Effect, Foliage, Snow, Beach, Fireworks, Aquarium, Underwater)
	<b>Photo Effects</b>	My Colors (My Colors Off, Vivid, Neutral, Sepia, Black & White, Positive Film, Lighter Skin Tone, Darker Skin Tone, Vivid Blue, Vivid Green, Vivid Red, Custom Color)	My Colors (My Colors Off, Vivid, Neutral, Sepia, Black & White, Positive Film, Lighter Skin Tone, Darker Skin Tone, Vivid Blue, Vivid Green, Vivid Red, Custom Color)
	<b>Drive Modes</b>	Single, Continuous, Self-Timer	Single, Continuous, Self-Timer
	<b>Continuous Shooting</b>	Approx. 1.5 fps <sup>4</sup> (until memory card becomes full) <sup>7</sup>	Approx. 1.3 fps <sup>4</sup> (until memory card becomes full) <sup>7</sup>
RECORDING PIXELS / COMPRESSION	<b>Image Size</b>	(L)4000 x 3000, (M1)3264 x 2448, (M2)2592 x 1944, (M3, Postcard Date Imprint)1600 x 1200, (S)640 x 480, (W)4000 x 2248. Resize in playback (M3, S, 320 x 240)	(L)3264 x 2448, (M1)2592 x 1944, (M2)2048 x 1536, (M3)1600 x 1200, (S)640 x 480, (W)3264 x 1832, (Postcard Date Imprint)1600 x 1200
	<b>Compression</b>	Superfine, Fine, Normal	Superfine, Fine, Normal
	<b>Movies</b>	(L)11024 x 768, 15 fps, (L2)640 x 480, 30 fps/30 fps(LP), (M)320 x 240, 30 fps (S)160 x 120, 15 fps, (Time Lapse)640 x 480, 0.5/1 fps (Playback 15 fps)	(L)640 x 480, 30 fps/30 fps(LP), (M)320 x 240, 60/30/15 fps, (S)160 x 120, 15 fps (Time Lapse)640 x 480, 0.5/1 fps (Playback 15 fps)
	<b>Movie Length</b>	Up to 4GB or 1 hour (L1, L2 and M) <sup>7</sup> , up to 3 mins (S) <sup>7</sup> , up to 120 mins (Time Lapse) <sup>7</sup>	Up to 4GB or 1 hour (L and M, 30/15 fps) <sup>7</sup> , up to 3 mins (S) <sup>7</sup> , up to 1 min (M, 60fps) <sup>7</sup> up to 120 mins (Time Lapse) <sup>7</sup>
FILE TYPES	<b>Still Image Type</b>	JPEG compression, (Exif 2.2 [Exif Print] compliant) / Design rule for Camera File system, Digital Print Order Format [DPOF] Version 1.1 compliant	JPEG compression, (Exif 2.2 [Exif Print] compliant) / Design rule for Camera File system, Digital Print Order Format [DPOF] Version 1.1 compliant
	<b>Movies</b>	AVI [Motion JPEG compression + WAVE (monaural)]	AVI [Motion JPEG compression + WAVE (monaural)]
DIRECT PRINT	<b>Sound Files</b>	WAVE (monaural)	WAVE (monaural)
	<b>Canon Printers</b>	Canon SELPHY Compact Photo Printers and Canon Inkjet Printers supporting PictBridge (ID Photo Print, Fixed Size Print and Movie Print supported on SELPHY CP & ES printers only)	Canon SELPHY Compact Photo Printers and Canon Inkjet Printers supporting PictBridge (ID Photo Print, Fixed Size Print and Movie Print supported on SELPHY CP & ES printers only)
OTHER FEATURES	<b>PictBridge</b>	YES	YES
	<b>Red-Eye Correction</b>	YES, in playback	YES, in playback
	<b>My Camera/My Category</b>	Start-up image and camera sounds customisation / Image tagging feature	Start-up image and camera sounds customisation / Image tagging feature
	<b>Sound Memo</b>	Up to 60 sec. per image	Up to 60 sec. per image
	<b>Intelligent Orientation Sensor</b>	YES	YES
	<b>Histogram</b>	YES	YES
	<b>Playback Zoom</b>	Approx. 2x - 10x	Approx. 2x - 10x
	<b>Self Timer</b>	Approx. 2 or 10 sec. or Custom	Approx. 2 or 10 sec. or Custom
	<b>Menu Languages</b>	25 languages	25 languages
	<b>Computer/Other</b>	USB 2.0 Hi-Speed (Mini-B, MTP, PTP) / A/V output (PAL/NTSC)	USB 2.0 Hi-Speed (Mini-B, MTP, PTP) / A/V output (PAL/NTSC)
MEMORY CARD	<b>Type</b>	SD, SDHC, MMC, MMCplus, HC MMCplus, 32MB memory card supplied	Secure Digital (SD) Card, Secure Digital High-Capacity (SDHC) Card or MultiMediaCard (MMC), 32MB memory card supplied
SUPPORTED OPERATING SYSTEM	<b>PC</b>	Windows® 2000 SP4 / XP SP2 / Vista	Windows® 2000 SP4 / XP / XP SP1-2 / Vista
SOFTWARE	<b>Macintosh</b>	Mac OS X v10.3 - 10.4	Mac OS X v10.3 - 10.4
	<b>Browsing &amp; Printing</b>	ZoomBrowser EX / ImageBrowser	ZoomBrowser EX / ImageBrowser
POWER SOURCE	<b>Other</b>	PhotoStitch	PhotoStitch
	<b>Batteries</b>	Rechargeable Li-ion Battery NB-5L (battery and charger supplied)	Rechargeable Li-ion Battery NB-5L (battery and charger supplied)
ACCESSORIES	<b>A/C Power Supply</b>	Optional, AC adapter kit ACK-DC30	Optional, AC adapter kit ACK-DC30
	<b>See pages 60 - 65 for full accessories</b>	See pages 60 - 65 for full accessories	See pages 60 - 65 for full accessories
PHYSICAL SPECIFICATIONS	<b>Operating Environment</b>	0 - 40°C, 10 - 90% humidity	0 - 40°C, 10 - 90% humidity
	<b>Dimensions (W x H x D)</b>	95.9 x 59.9 x 27.6mm (excluding protrusions)	90.4 x 56.5 x 26.4mm (excluding protrusions)
	<b>Weight (body only)</b>	Approx. 165g	Approx. 165g

## Digital Still Compact Cameras Specifications Chart



DIGITAL CAMERA		<b>Digital IXUS 860 IS</b>	<b>Digital IXUS 75</b>
IMAGE SENSOR	Type	1/2.5" CCD	1/2.5" CCD
	Effective Pixels	Approx. 8.0M	Approx. 7.1M
IMAGE PROCESSOR	Type	DIGIC III with ISAPS technology	DIGIC III with ISAPS technology
	LENS	<b>Focal Length</b>	4.6 - 17.3mm (35mm equivalent: 28 - 105mm)
<b>Zoom</b>		Optical 3.8x Digital approx. 4x (with Digital Tele-Converter approx. 1.6x or 2.0x and Safety Zoom 1) <sup>2</sup> Combined approx. 15x	Optical 3x Digital approx. 4x <sup>2</sup> (with Digital Tele-Converter approx. 1.5x or 1.9x and Safety Zoom 1) <sup>2</sup> Combined approx. 12x
LENS	<b>Maximum f/number</b>	f/2.8 - f/5.8	f/2.8 - f/4.9
	<b>Construction</b>	7 elements in 5 groups (2 aspherical elements including 1 double-sided UA element)	6 elements in 5 groups (2 UA elements)
	<b>Image Stabilisation</b>	YES (shift-type)	—
	<b>AF System/Points</b>	AI AF (Face Detection / 9-point), 1-point AF (fixed centre)	AI AF (Face Detection / 9-point), 1-point AF (fixed centre)
FOCUSING	Type	TTL	TTL
	<b>AF Lock/AF Assist Beam</b>	On/Off Selectable / YES	On/Off Selectable / YES
	<b>Closest Focusing Distance</b>	3cm	3cm
	<b>Metering Modes</b>	Evaluative (linked to Face Detection AF frame), Centre-weighted average, Spot (centre)	Evaluative (linked to Face Detection AF frame), Centre-weighted average, Spot (centre)
EXPOSURE CONTROL	<b>AE Lock</b>	On / Off Selectable	On / Off Selectable
	<b>Exposure Compensation/AEB</b>	+/- 2 EV in 1/3 stop increments / —	+/- 2 EV in 1/3 stop increments / —
SHUTTER	<b>ISO Sensitivity<sup>3</sup></b>	AUTO, High ISO Auto, 80, 100, 200, 400, 800, 1600	AUTO, High ISO Auto, 80, 100, 200, 400, 800, 1600
	<b>Speed</b>	15 - 1/1,600 sec. (Shutter speeds of 1 sec. and more available in Long Shutter Mode only)	15 - 1/1,500 sec. (Shutter speeds of 1 sec. and more available in Long Shutter Mode only)
WHITE BALANCE	<b>Settings</b>	Auto, Daylight, Cloudy, Tungsten, Fluorescent, Fluorescent H, Custom	Auto, Daylight, Cloudy, Tungsten, Fluorescent, Fluorescent H, Custom
VIEWFINDER	<b>Viewfinder</b>	—	—
LCD MONITOR	<b>Monitor/Coverage</b>	3.0" P-Si TFT, approx. 230,000 pixels / 100%	3.0" P-Si TFT, approx. 230,000 pixels / 100%
FLASH	<b>Modes</b>	Auto, Manual Flash On / Off	Auto, Manual Flash On / Off
	<b>Flash Exposure Lock</b>	YES	YES
	<b>Built-in Flash Range</b>	30cm - 4.0m (W) / 2.0m (T) (at ISO AUTO equivalent)	50cm - 3.5m (W) / 2.0m (T) (at ISO AUTO equivalent)
	<b>External Flash</b>	Canon's High Power Flash HF-DC1	Canon's High Power Flash HF-DC1
SHOOTING	<b>Modes</b>	Auto, Manual, Digital Macro, Color Accent, Color Swap, Stitch Assist, Movie, Special Scene (Portrait, Night Snapshot, Kids & Pets, Indoor, Foliage, Snow, Beach, Fireworks, Aquarium, Underwater)	Auto, Manual, Digital Macro, Color Accent, Color Swap, Stitch Assist, Movie, Special Scene (Portrait, Night Snapshot, Kids & Pets, Indoor, Foliage, Snow, Beach, Fireworks, Aquarium, Underwater)
	<b>Photo Effects</b>	My Colors (My Colors Off, Vivid, Neutral, Sepia, Black & White, Positive Film, Lighter Skin Tone, Darker Skin Tone, Vivid Blue, Vivid Green, Vivid Red, Custom Color)	My Colors (My Colors Off, Vivid, Neutral, Sepia, Black & White, Positive Film, Lighter Skin Tone, Darker Skin Tone, Vivid Blue, Vivid Green, Vivid Red, Custom Color)
	<b>Drive Modes</b>	Single, Continuous, Self-Timer	Single, Continuous, Self-Timer
	<b>Continuous Shooting</b>	Approx. 1.7 fps <sup>4</sup> (until memory card becomes full) <sup>7</sup>	Approx. 1.7 fps <sup>4</sup> (until memory card becomes full) <sup>7</sup>
RECORDING PIXELS / COMPRESSION	<b>Image Size</b>	(L)3264 x 2448, (M1)2592 x 1944, (M2)2048 x 1536, (M3)1600 x 1200, (S)640 x 480, (W)3264 x 1832. Resize in playback (M3, S, 320 x 240)	(L)3072 x 2304, (M1)2592 x 1944, (M2)2048 x 1536, (M3)1600 x 1200, (S)640 x 480, (W)3072 x 1728, (Postcard Date Imprint)1600 x 1200
	<b>Compression</b>	Superfine, Fine, Normal	Superfine, Fine, Normal
	<b>Movies</b>	(L)640 x 480, 30 fps/30 fps(LP), (M)320 x 240, 30 fps, (S)160 x 120, 15 fps (Time Lapse)640 x 480, 0.5/1 fps (Playback 15 fps)	(L)640 x 480, 30/15 fps, (M)320 x 240, 60/30/15 fps, (S)160 x 120, 15 fps (Time Lapse)640 x 480, 0.5/1 fps (Playback 15 fps)
	<b>Movie Length</b>	Up to 4GB or 1 hour (L and M) <sup>7</sup> , up to 3 mins (S) <sup>7</sup> , up to 120 mins (Time Lapse) <sup>7</sup>	Up to 4GB or 1 hour (L and M, 30/15 fps) <sup>7</sup> , up to 3 mins (S) <sup>7</sup> , up to 1 min (M, 60 fps) <sup>7</sup> , up to 120 mins (Time Lapse) <sup>7</sup>
FILE TYPES	<b>Still Image Type</b>	JPEG compression, (Exif 2.2 [Exif Print] compliant) / Design rule for Camera File system, Digital Print Order Format [DPOF] Version 1.1 compliant	JPEG compression, (Exif 2.2 [Exif Print] compliant) / Design rule for Camera File system, Digital Print Order Format [DPOF] Version 1.1 compliant
	<b>Movies</b>	AVI [Motion JPEG compression + WAVE (monaural)]	AVI [Motion JPEG compression + WAVE (monaural)]
DIRECT PRINT	<b>Sound Files</b>	WAVE (monaural)	WAVE (monaural)
	<b>Canon Printers</b>	Canon SELPHY Compact Photo Printers and Canon Inkjet Printers supporting PictBridge (ID Photo Print, Fixed Size Print and Movie Print supported on SELPHY CP & ES printers only)	Canon SELPHY Compact Photo Printers and Canon Inkjet Printers supporting PictBridge (ID Photo Print, Fixed Size Print and Movie Print supported on SELPHY CP & ES printers only)
OTHER FEATURES	<b>PictBridge</b>	YES	YES
	<b>Red-Eye Correction</b>	YES, in playback	YES, in playback
	<b>My Camera/My Category</b>	Start-up image and camera sounds customisation / Image tagging feature	Start-up image and camera sounds customisation / Image tagging feature
	<b>Sound Memo</b>	Up to 60 sec. per image	Up to 60 sec. per image
	<b>Intelligent Orientation Sensor</b>	YES	YES
	<b>Histogram</b>	YES	YES
	<b>Playback Zoom</b>	Approx. 2x - 10x	Approx. 2x - 10x
	<b>Self Timer</b>	Approx. 2 or 10 sec. or Custom	Approx. 2 or 10 sec. or Custom
	<b>Menu Languages</b>	25 languages	25 languages
	<b>Computer/Other</b>	USB 2.0 Hi-Speed (Mini-B, MTP, PTP) / A/V output (PAL/NTSC)	USB 2.0 Hi-Speed (Mini-B, MTP, PTP) / A/V output (PAL/NTSC)
MEMORY CARD	<b>Type</b>	SD, SDHC, MMC, MMCplus, HC MMCplus, 32MB memory card supplied	Secure Digital (SD) Card, Secure Digital High-Capacity (SDHC) Card or MultiMediaCard (MMC), 32MB Memory Card supplied
SUPPORTED OPERATING SYSTEM	<b>PC</b>	Windows® 2000 SP4 / XP SP2 / Vista	Windows® 2000 SP4 / XP / XP SP1-2 / Vista
SOFTWARE	<b>Macintosh</b>	Mac OS X v10.3 - 10.4	Mac OS X v10.3 - 10.4
	<b>Browsing &amp; Printing</b>	ZoomBrowser EX / ImageBrowser	ZoomBrowser EX / ImageBrowser
POWER SOURCE	<b>Other</b>	PhotoStitch	PhotoStitch
	<b>Batteries</b>	Rechargeable Li-ion Battery NB-5L (battery and charger supplied)	Rechargeable Li-ion Battery NB-4L (battery and charger supplied)
ACCESSORIES	<b>A/C Power Supply</b>	Optional, AC adapter kit ACK-DC30	Optional, AC Adapter kit ACK-DC10
	<b>See pages 60 - 65 for full accessories</b>	See pages 60 - 65 for full accessories	See pages 60 - 65 for full accessories
PHYSICAL SPECIFICATIONS	<b>Operating Environment</b>	0 - 40°C, 10 - 90% humidity	0 - 40°C, 10 - 90% humidity
	<b>Dimensions (W x H x D)</b>	92.6 x 58.8 x 25.9mm (excluding protrusions)	91.6 x 56.8 x 19.6mm (excluding protrusions)
	<b>Weight (body only)</b>	Approx. 155g	Approx. 130g

## Digital Still Compact Cameras Specifications Chart



DIGITAL CAMERA		<b>Digital IXUS 70</b>
IMAGE SENSOR	Type	1/2.5" CCD
	Effective Pixels	Approx. 7.1M
IMAGE PROCESSOR	Type	DIGIC III with ISAPS technology
LENS	Focal Length	5.8 - 17.4mm (35mm equivalent: 35 - 105mm)
	Zoom	Optical 3x Digital approx. 4x <sup>1</sup> (with Digital Tele-Converter approx. 1.5x or 1.9x and Safety Zoom <sup>1)</sup> ). Combined approx. 12x
	Maximum f/number	f/2.8 - f/4.9
	Construction	6 elements in 5 groups (2 UA elements)
	Image Stabilisation	—
FOCUSING	Type	TTL
	AF System/Points	AIaF (Face Detection / 9-point), 1-point AF (fixed centre)
	AF Lock/AF Assist Beam	On/Off Selectable / YES
	Closest Focusing Distance	3cm
EXPOSURE CONTROL	Metering Modes	Evaluative (linked to Face Detection AF frame), Centre-weighted average, Spot (centre)
	AE Lock	On / Off Selectable
	Exposure Compensation/AEB	+/- 2 EV in 1/3 stop increments / —
	ISO Sensitivity <sup>3</sup>	AUTO, High ISO Auto, 80, 100, 200, 400, 800, 1600
SHUTTER	Speed	15 - 1/1,500 sec. (Shutter speeds of 1 sec. and more available in Long Shutter Mode only)
	Settings	Auto, Daylight, Cloudy, Tungsten, Fluorescent, Fluorescent H, Custom
VIEWFINDER	Viewfinder	Real-image zoom, optical viewfinder
LCD MONITOR	Monitor/Coverage	2.5" P-Si TFT, approx. 230,000 pixels / 100%
FLASH	Modes	Auto, Manual Flash On / Off
	Flash Exposure Lock	YES
	Built-in Flash Range	50cm - 3.5m (W) / 2.0m (T) (at ISO AUTO equivalent)
	External Flash	Canon's High Power Flash HF-DC1
SHOOTING	Modes	Auto, Manual, Digital Macro, Portrait, Night Snapshot, Color Accent, Color Swap, Stitch Assist, Movie, Special Scene (Kids & Pets, Indoor, Foliage, Snow, Beach, Fireworks, Aquarium, Underwater)
	Photo Effects	My Colors (My Colors Off, Vivid, Neutral, Sepia, Black & White, Positive Film, Lighter Skin Tone, Darker Skin Tone, Vivid Blue, Vivid Green, Vivid Red, Custom Color)
	Drive Modes	Single, Continuous, Self-Timer
	Continuous Shooting	Approx. 1.7 fps <sup>6</sup> (until memory card becomes full) <sup>7</sup>
RECORDING PIXELS / COMPRESSION	Image Size	(L)3072 x 2304, (M1)2592 x 1944, (M2)2048 x 1536, (M3)1600 x 1200, (S)640 x 480, (W)3072 x 1728. (Postcard Date Imprint)1600 x 1200
	Compression	Superfine, Fine, Normal
	Movies	(L)640 x 480, 30/15 fps, (M)320 x 240, 60/30/15 fps, (S)160 x 120, 15 fps (Time Lapse)640 x 480, 0.5/1 fps (Playback 15 fps)
	Movie Length	Up to 4GB or 1 hour (L and M, 30/15 fps) <sup>7</sup> , up to 3 mins (S) <sup>7</sup> , up to 1 min (M, 60 fps) <sup>7</sup> , up to 120 mins (Time Lapse) <sup>7</sup>
FILE TYPES	Still Image Type	JPEG compression, (Exif 2.2 [Exif Print] compliant) / Design rule for Camera File system, Digital Print Order Format [DPOF] Version 1.1 compliant
	Movies	AVI [Motion JPEG compression + WAVE (monaural)]
	Sound Files	WAVE (monaural)
DIRECT PRINT	Canon Printers	Canon SELPHY Compact Photo Printers and Canon Inkjet Printers supporting PictBridge (ID Photo Print, Fixed Size Print and Movie Print on SELPHY CP & ES printers only)
	PictBridge	YES
OTHER FEATURES	Red-Eye Correction	YES, in playback
	My Camera/My Category	Start-up image and camera sounds customisation / Image tagging feature
	Sound Memo	Up to 60 sec. per image
	Intelligent Orientation Sensor	YES
	Histogram	YES
	Playback Zoom	Approx. 2x - 10x
	Self Timer	Approx. 2 or 10 sec. or Custom
Menu Languages	25 languages	
INTERFACE	Computer/Other	USB 2.0 Hi-Speed (Mini-B, MTP, PTP) / A/V output (PAL/NTSC)
MEMORY CARD	Type	Secure Digital (SD) Card, Secure Digital High-Capacity (SDHC) Card or MultiMediaCard (MMC), 32MB Memory Card supplied
SUPPORTED OPERATING SYSTEM	PC	Windows® 2000 SP4 / XP / XP SP1-2 / Vista
	Macintosh	Mac OS X v10.3 - 10.4
SOFTWARE	Browsing & Printing	ZoomBrowser EX / ImageBrowser
	Other	PhotoStitch
	Drivers	TWAIN (2000)
POWER SOURCE	Batteries	Rechargeable Li-ion Battery NB-4L (battery and charger supplied)
	A/C Power Supply	Optional AC Adapter kit ACK-DC10
ACCESSORIES		See pages 60 - 65 for full accessories
PHYSICAL SPECIFICATIONS	Operating Environment	0 - 40°C, 10 - 90% humidity
	Dimensions (W x H x D)	85.9 x 53.5 x 19.4mm (excluding protrusions)
	Weight (body only)	Approx. 125g

### Footnotes for Digital Still Compact Cameras Specifications Charts

All data is based on Canon standard testing methods except where indicated.  
Subject to change without notice.

- 1 Depending on the image size selected
- 2 Digital zoom available for still image and standard movie modes only. Optical zoom may not be available during movie recording
- 3 Standard Output Sensitivity/Recommended Exposure Index. According to ISO 12232:2006 (20th April 2006) which specifies the method for assigning and reporting ISO speed ratings for digital still cameras.
- 4 Not all functions of the flash are supported
- 5 Recording pixels fixed at 1600 x 1200
- 6 Large/Fine with LCD monitor off
- 7 Depending on memory card speed/capacity

### Footnotes for SELPHY Printers Specifications Chart

Subject to change without notice.

- 1 Requires optional paper cassette
- 2 To test the image permanence of prints that are stored in an album, we use an accelerated testing method as how the image permanence of silver-halide photo papers are measured when stored in dark places. Print samples are printed with the optical density of 1.0 (each Bk, C, M, Y). The samples are kept in a certain environment of high temperature and 50% humidity. The rate of the decrease in the optical density and rate of yellow discoloration are recorded. The recorded results are then converted to the length of time when print image is kept in an environment of 23°C/ 50% humidity. <Criteria for estimation of print longevity> The point where monochromatic/ reflective optical density shows loss of 30% (starting density of 1.0)
- 3 Print speed can vary dependent on data size, print method, memory card and capacity and is measured from movement of paper from landscape to portrait orientation on SELPHY ES1
- 4 Modes/features available may differ dependent on camera model or use of memory card to print
- 5 Requires adapter (sold separately)
- 6 Mobile phones and PDA's must be Bluetooth enabled and support Bluetooth version 1.1 or above Photo printing only - pictures must be in the JPEG format. Bluetooth operation depends on the device and software version used
- 7 Pictures must be taken in the JPEG format and transferred using the IROBEX or IrMc by vNOTE protocol
- 8 Supported languages are: English, German, French, Dutch, Danish, Finnish, Italian, Norwegian, Swedish, Spanish, Russian, Portuguese, Hungarian, Polish, Czech, Greek, Turkish, Simplified Chinese, Chinese, Korean, Japanese (Also supported on SELPHY ES2 and SELPHY ES20: Ukrainian, Romanian, Thai)

## SELPHY Printers Specifications Chart



PRINTER		<b>SELPHY ES2</b>	<b>SELPHY ES20</b>
PRINTING SYSTEM	Method	Dye-sublimation thermal transfer printing system, with DIGIC II processor	Dye-sublimation thermal transfer printing system, with DIGIC II processor
	Maximum Resolution	300 x 600 dpi	300 x 600 dpi
	Colours	3 colour inks with over coating, BW (Black ink with overcoating) up to 256 levels per colour (24 bit colour depth)	3 colour inks with over coating, BW (Black ink with overcoating) up to 256 levels per colour (24 bit colour depth)
MEDIA & CARTRIDGE	Postcard Size	148 x 100mm - [Easy Photo Pack E-P50, Easy Photo Pack E-P100, Easy Photo Pack E-P25BW]	148 x 100mm - [Easy Photo Pack E-P50, Easy Photo Pack E-P100, Easy Photo Pack E-P25BW]
	Wide Size	—	—
	L Size	119 x 89mm - [Easy Photo Pack E-L50, Easy Photo Pack E-L100]	119 x 89mm - [Easy Photo Pack E-L50, Easy Photo Pack E-L100]
	Credit Card Size	86 x 54mm - [Easy Photo Pack E-C25]	86 x 54mm - [Easy Photo Pack E-C25]
	Credit Card Size Stickers	86 x 54mm - [Easy Photo Pack E-C25L]	86 x 54mm - [Easy Photo Pack E-C25L]
	Mini Stickers	—	—
	Ink Cartridge	Included with media (Ink/Paper Integrated Cartridge)	Included with media (Ink/Paper Integrated Cartridge)
	Image Longevity	100 Years Print <sup>2</sup>	100 Years Print <sup>2</sup>
	Sheet Feeder	Auto feed from integrated cartridge	Auto feed from integrated cartridge
MEDIA INPUT			
PRINT SPEEDS	Postcard Size	Approx. 69 sec. <sup>3</sup>	Approx. 69 sec. <sup>3</sup>
	Wide Size	—	—
	L Size	Approx. 61 sec. <sup>3</sup>	Approx. 61 sec. <sup>3</sup>
	Credit Card Size	Approx. 53 sec. <sup>3</sup>	Approx. 53 sec. <sup>3</sup>
	Credit Card Size Stickers	Approx. 53 sec. <sup>3</sup>	Approx. 53 sec. <sup>3</sup>
PRINTING	Print Modes	All Image Print, Creative Print (Frame, Clip Art, Calendar, Multi Layout, Speech Bubble, ID Photo, Movie Print, Image Effects), DPOF Image Print, Single Image Print, Trimming Print, 2-up, 4-up, 8-up and Index Layout, Fixed Size Layout <sup>4</sup>	All Image Print, Creative Print (Frame, Clip Art, Calendar, Multi Layout, Speech Bubble, ID Photo, Movie Print), DPOF Image Print, Single Image Print, Trimming Print, 2-up, 4-up, 8-up and Index Layout, Fixed Size Layout <sup>4</sup>
	Print Method	Image Optimize, Borderless, Bordered, Date Print, File Name Print, My Colors <10 modes>, Manual adjustment, Red-Eye Correction <sup>4</sup>	Image Optimize, Borderless, Bordered, Date Print, File Name Print, My Colors <10 modes>, Manual adjustment, Red-Eye Correction <sup>4</sup>
PRINT METHOD	Print Settings	Image Optimize, Borderless, Bordered, Date Print, File Name Print, My Colors <10 modes>, Manual adjustment, Red-Eye Correction <sup>4</sup>	Image Optimize, Borderless, Bordered, Date Print, File Name Print, My Colors <10 modes>, Manual adjustment, Red-Eye Correction <sup>4</sup>
	Direct Printing From a Camera	Canon Direct Print compliant, PictBridge compliant	Canon Direct Print compliant, PictBridge compliant
	Direct From a Memory Card	Supported card types: Compact Flash, Microdrive, SD Memory card, miniSD Card, SDHC Memory card, mini SDHC card, Multimedia Card, MMCplus Card, HC MMCplus Card, Memory Stick, Memory Stick PRO, Memory Stick Duo, Memory Stick PRO Duo, xD-Picture Card <sup>5</sup> , microSD Card <sup>5</sup> , microSDHC Card <sup>5</sup> , MMCmobile Card <sup>5</sup> , MMCmicro Card <sup>5</sup> , RS-MMC Card <sup>5</sup> , Memory Stick micro <sup>5</sup>	Supported card types: Compact Flash, Microdrive, SD Memory card, miniSD Card, SDHC Memory card, mini SDHC card, Multimedia Card, MMCplus Card, HC MMCplus Card, Memory Stick, Memory Stick PRO, Memory Stick Duo, Memory Stick PRO Duo, xD-Picture Card <sup>5</sup> , microSD Card <sup>5</sup> , microSDHC Card <sup>5</sup> , MMCmobile Card <sup>5</sup> , MMCmicro Card <sup>5</sup> , RS-MMC Card <sup>5</sup> , Memory Stick micro <sup>5</sup>
	Direct From a Camera Phone	Optional Bluetooth® Unit BU-20 (printing from compatible mobile camera phones & PDA's) <sup>6</sup> , IrDA (printing from compatible mobile camera phones) <sup>7</sup>	Optional Bluetooth® Unit BU-20 (printing from some mobile camera phones & PDA's) <sup>6</sup>
	Print From a Computer	YES, requires standard USB cable	YES, requires standard USB cable
INTERFACE	Camera	USB type A port on printer, WiFi IEEE 802.11b (with Digital IXUS WIRELESS and Wireless Print Adapter WA-1E)	USB type A port on printer, WiFi IEEE 802.11b (with Digital IXUS WIRELESS and Wireless Print Adapter WA-1E)
	Computer LCD Monitor	USB type B port on printer Tilt up 3.0° Colour TFT viewer with multi-language user interface <sup>8</sup>	USB type B port on printer 2.5° Colour TFT viewer with multi-language user interface <sup>8</sup>
SUPPORTED OPERATING SYSTEM	PC	Windows® 2000 SP4 / XP SP2 / Vista	Windows® 2000 SP4 / XP SP2 / Vista
	Macintosh	Mac OS X v10.3 - v10.4	Mac OS X v10.3 - v10.4
SOFTWARE	Browsing & Printing	PC: ZoomBrowser EX, Photo Express LE Mac: ImageBrowser	PC: ZoomBrowser EX, Photo Express LE Mac: ImageBrowser
	Drivers	PC / Mac	PC / Mac
POWER SOURCE	A/C Power Supply	YES, supplied	YES, supplied
	Battery Pack	YES, optional (Approx 50 + Postcard Size / L size prints per full charge)	—
	Power Consumption	Approx. 4W (standby), approx. 70W (printing)	Approx. 4W (standby), approx. 70W (printing)
ACCESSORIES	Case	—	—
	Paper Cassette	Not required	Not required
	Power Supply & Battery Chargers	Compact Power Adapter CA-ES100, Battery Pack NB-ES1L	Compact Power Adapter CA-ES100
	Other	BU-20 Bluetooth® Unit for printing from compatible camera phones and PDA's <sup>6</sup>	BU-20 Bluetooth® Unit for printing from compatible camera phones and PDA's <sup>6</sup>
PHYSICAL SPECIFICATIONS	Operating Environment	5 - 40°C, 20 - 80% humidity	5 - 40°C, 20 - 80% humidity
	Dimensions (W x H x D)	213.4 x 189.6 x 130.9mm	213.4 x 189.6 x 130.9mm
	Weight	1955g (Excluding Ink/Paper Integrated Cartridge)	1865g (Excluding Ink/Paper Integrated Cartridge)

# SELPHY Printers Specifications Chart



		<b>SELPHY CP750</b>	<b>SELPHY CP740</b>
PRINTER PRINTING SYSTEM	<b>Method</b>	Dye-sublimation thermal transfer printing system	Dye-sublimation thermal transfer printing system
	<b>Maximum Resolution</b>	300 x 300 dpi	300 x 300 dpi
	<b>Colours</b>	3 colour inks with over coating, 256 levels per colour (24 bit colour depth)	3 colour inks with over coating, 256 levels per colour (24 bit colour depth)
MEDIA & CARTRIDGE	<b>Postcard Size</b>	148 x 100mm - [KP-36IP, KP-72IP, KP-108IP]	148 x 100mm - [KP-36IP, KP-72IP, KP-108IP]
	<b>Wide Size</b>	100 x 200mm - [KW-24IP] <sup>1</sup>	100 x 200mm - [KW-24IP] <sup>1</sup>
	<b>L Size</b>	119 x 89mm - [KL-36IP] <sup>1</sup>	119 x 89mm - [KL-36IP] <sup>1</sup>
	<b>Credit Card Size</b>	86 x 54mm - [KC-36IP] <sup>1</sup>	86 x 54mm - [KC-36IP] <sup>1</sup>
	<b>Credit Card Size Stickers</b>	86 x 54mm - [KC-18IF] <sup>1</sup>	86 x 54mm - [KC-18IF] <sup>1</sup>
	<b>Mini Stickers</b>	22.0 x 17.3mm (x8 stickers on one sheet) - [KC-18IL] <sup>1</sup>	22.0 x 17.3mm (x8 stickers on one sheet) - [KC-18IL] <sup>1</sup>
	<b>Ink Cartridge</b>	Included with media	Included with media
	<b>Image Longevity</b>	100 Years Print <sup>2</sup>	100 Years Print <sup>2</sup>
MEDIA INPUT	<b>Sheet Feeder</b>	Auto feed from paper cassette	Auto feed from paper cassette
PRINT SPEEDS	<b>Postcard Size</b>	Approx. 58 sec. <sup>3</sup>	Approx. 58 sec. <sup>3</sup>
	<b>Wide Size</b>	Approx. 73 sec. <sup>3</sup>	Approx. 73 sec. <sup>3</sup>
	<b>L Size</b>	Approx. 50 sec. <sup>3</sup>	Approx. 50 sec. <sup>3</sup>
	<b>Credit Card Size</b>	Approx. 31 sec. <sup>3</sup>	Approx. 31 sec. <sup>3</sup>
	<b>Credit Card Size Stickers</b>	Approx. 31 sec. <sup>3</sup>	Approx. 31 sec. <sup>3</sup>
	<b>Mini Stickers</b>	Approx. 31 sec. <sup>3</sup>	Approx. 31 sec. <sup>3</sup>
PRINTING	<b>Print Modes</b>	All Image Print, DPOF Image Print, Fixed Size Layout, ID Photo Print, Movie Print, Single Image Print, Trimming Print, 2-up, 4-up and 8-up Layout, Index print <sup>4</sup>	All Image Print, DPOF Image Print, Fixed Size Layout, ID Photo Print, Movie Print, Single Image Print, 2-up, 4-up and 8-up Layout, Index print <sup>4</sup>
PRINT METHOD	<b>Print Settings</b>	Image Optimize, Borderless, Bordered, Date Print, File Name Print, My Colors <5 modes>, Red-Eye Correction <sup>4</sup>	Image Optimize, Borderless, Bordered, Date Print, File Name Print, Red-Eye Correction <sup>4</sup>
	<b>Direct Printing From a Camera</b>	Canon Direct Print compliant, PictBridge compliant	Canon Direct Print compliant, PictBridge compliant
	<b>Direct From a Memory Card</b>	Supported card types: Compact Flash, Memory Stick, Memory Stick PRO, Memory Stick PRO Duo, Memory Stick DUO, Microdrive, miniSD Card, mini SDHC memory card, Multimedia Card, Multimedia Card plus, Multimedia Card mobile, SD memory card, SDHC Memory card, RS-MMC, microSD memory card <sup>5</sup> , microSDHC memory card <sup>5</sup> , Multimedia Card micro <sup>5</sup> , Memory stick micro <sup>5</sup> , xD-Picture Card <sup>5</sup>	Supported card types: Compact Flash, Memory Stick, Memory Stick PRO, Memory Stick PRO Duo, Memory Stick DUO, Microdrive, miniSD Card, mini SDHC memory card, Multimedia Card, Multimedia Card plus, Multimedia Card mobile, SD memory card, SDHC Memory card, RS-MMC, microSD memory card <sup>5</sup> , microSDHC memory card <sup>5</sup> , Multimedia Card micro <sup>5</sup> , Memory stick micro <sup>5</sup> , xD-Picture Card <sup>5</sup>
	<b>Direct From a Camera Phone</b>	Optional Bluetooth® Unit BU-20 (printing from some mobile camera phones & PDA's) <sup>6</sup> , IrDA (printing from some mobile camera phones) <sup>7</sup> , iSimple (printing from some mobile devices) <sup>7</sup>	Optional Bluetooth® Unit BU-20 (printing from some mobile camera phones & PDA's) <sup>6</sup>
	<b>Print From a Computer</b>	YES, requires standard USB cable	YES, requires standard USB cable
INTERFACE	<b>Camera</b>	Integrated USB cable (Mini-B), USB type A port on printer, WiFi IEEE 802.11b (with Digital IXUS WIRELESS and Wireless Print Adapter WA-1E)	Integrated USB cable (Mini-B), USB type A port on printer, WiFi IEEE 802.11b (with Digital IXUS WIRELESS and Wireless Print Adapter WA-1E)
	<b>Computer</b>	USB type B port on printer	USB type B port on printer
	<b>LCD Monitor</b>	2.4" TFT colour LCD with icon based Graphical User Interface	2.0" Colour LCD with icon based Graphical User Interface
SUPPORTED OPERATING SYSTEM	<b>PC</b>	Windows® 2000 SP4 / XP (SP1-2) / Vista	Windows® 2000 SP4 / XP (SP1-2) / Vista
	<b>Macintosh</b>	Mac OS X v10.3 - v10.4	Mac OS X v10.3 - v10.4
SOFTWARE	<b>Browsing &amp; Printing</b>	PC: ZoomBrowser EX, Easy-PhotoPrint, PhotoStitch Mac: ImageBrowser, PhotoStitch	PC: ZoomBrowser EX, Easy-PhotoPrint, PhotoStitch Mac: ImageBrowser, PhotoStitch
	<b>Drivers</b>	PC / Mac	PC / Mac
POWER SOURCE	<b>A/C Power Supply</b>	YES, supplied	YES, supplied
	<b>Battery Pack</b>	YES, optional (Approx. 36+ Postcard Size prints per full charge)	—
	<b>Power Consumption</b>	Approx. 4W (standby), approx. 60W (printing)	Approx. 4W (standby), approx. 60W (printing)
ACCESSORIES	<b>Case</b>	CP Printer Carrying Case DCC-CP1	CP Printer Carrying Case DCC-CP1
	<b>Paper Cassette</b>	Postcard Size paper cassette [PCP-CP200], Wide paper cassette [PCW-CP100], L size paper cassette [PCL-CP200], Card Size [PCC-CP100]	Postcard Size paper cassette [PCP-CP200], Wide paper cassette [PCW-CP100], L size paper cassette [PCL-CP200], Card Size [PCC-CP100]
	<b>Power Supply &amp; Battery Chargers</b>	CA-CP200 Power adapter, Battery Pack NB-CP2L	CA-CP200 Power adapter
	<b>Other</b>	BU-20 Bluetooth® Unit for printing from compatible camera phones and PDA's <sup>6</sup>	BU-20 Bluetooth® Unit for printing from compatible camera phones and PDA's <sup>6</sup>
PHYSICAL SPECIFICATIONS	<b>Operating Environment</b>	5 - 40°C, 20 - 80% humidity	5 - 40°C, 20 - 80% humidity
	<b>Dimensions (W x H x D)</b>	179.0 x 127.1 x 63.0mm	179.0 x 127.1 x 63.0mm
	<b>Weight</b>	960g (Excluding Ink/ Paper Integrated Cartridge)	940g (Excluding Ink/ Paper Integrated Cartridge)



#### **Service Support**

Canon doesn't stop at developing great products, we deliver outstanding after-sales service too. Customers can have complete confidence in their Canon technology with the following benefits;

##### **Helpful, professional Customer Service Advisors**

Our team are trained specifically to support Canon products over the phone in order to resolve customers enquiries quickly and efficiently. Customers can call our customer services Helpline on 08705 143723. Lines are open during normal working hours (9am – 5.30pm) and all calls are charged at standard National rates.

##### **Qualified technicians**

All technicians receive ongoing product training and are equipped with the tools and resources to provide a first class service.

##### **Original Components**

Canon only uses genuine spare parts and components in repairs. This ensures high product performance and protects the product warranty.

Visit [www.canon.co.uk](http://www.canon.co.uk) for more information.

##### **Canon UK Ltd**

Woodhatch  
Reigate  
Surrey  
RH2 8BF  
08705 143723  
[www.canon.co.uk](http://www.canon.co.uk)

##### **Canon (Ir) Business Equipment Ltd**

Arena Road  
Sandyford Industrial Estate  
Dublin 18  
Ireland  
[www.canon.ie](http://www.canon.ie)

Not all products and services are available in all markets. All company and/or product names are trademarks and/or registered trademarks of their respective manufacturers in their markets and/or countries.

All trademarks are acknowledged. All data is based on Canon's standard testing and measuring methods.  
Errors and omissions excepted.

Canon reserves the right to change specifications and physical appearance without notice.

All LCD images and print outs shown are simulated for clarity of reproduction.

you can  
**Canon**

Canon Inc.  
[www.canon.com](http://www.canon.com)

Canon Europa NV  
[www.canon-europe.com](http://www.canon-europe.com)

Canon UK Ltd  
[www.canon.co.uk](http://www.canon.co.uk)

Canon (Irl) Business Equipment Ltd  
[www.canon.ie](http://www.canon.ie)

Find the perfect fit with **Careers@Canon**  
[www.canon-europe.com/about\\_us/careers/](http://www.canon-europe.com/about_us/careers/)



© 1986 Panda symbol WWF © WWF Registered Trademark



*We Speak Image*