

DCP-9015CDW

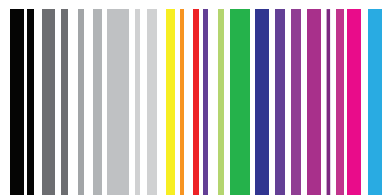
brother
at your side



ALL-IN-ONE COLOUR PERFORMANCE



The DCP-9015CDW is the fast all-in-one, offering wireless connectivity and 2-sided printing to suit your busy office.





Investing in colour

can give your company a real advantage in today's economic climate. Ideas look brighter, pitches more impactful and every piece of communication makes your business stand out. With high resolution prints and wireless networking, the DCP-9015CDW will be one of the smartest investments you and your company make.

DCP-9015CDW

The DCP-9015CDW is packed with a range of innovative features designed to deliver high quality performance for the busy office.



Integrated

A range of scanning features including Push scanning, scan to network (Windows® only) and scan to FTP allows information to be shared quickly.



Wireless

Save resources and share the DCP-9015CDW across your wireless network.



Reliable

The DCP-9015CDW delivers consistent print quality and performance.



Mobile

Use the iPrint&Scan app, AirPrint or Google Cloud Print™ to print and scan straight from your iPhone, iPad, Android device or Windows phone.



Web Connect

Print from and scan to Box, DropBox, Evernote®, Facebook, Flickr®, Google Drive™, Picasa™ & OneDrive®.



Productive

Full colour print speeds of up to 18ppm combined with the 9.3cm touch screen enables users to achieve results quickly and easily.



Save

Reduce print costs with 2-sided printing and the optional 2,200 page high yield colour toner cartridges for a lower cost per page.



DCP-9015CDW Technical Specifications

Brother's new LED colour range is packed with new technology. The DCP-9015CDW offers a wide range of features designed with you and your business in mind, combined into a sleek, compact machine perfect for your office space. The DCP-9015CDW embraces a range of new mobile features. Print directly from your mobile device with the Brother iPrint&Scan app or wirelessly using AirPrint, Mopria or Google Cloud Print™. Print speeds of up to 18ppm (mono) and 18ppm (colour) mean you will not be kept waiting for your documents.

Reduce your total print costs: the DCP-9015CDW offers high yield colour toner cartridges, with yields of up to 2,200 pages for a lower cost per page, whilst maintaining high print quality for professional looking documents. All Brother Colour LED printers incorporate separate toners and drums reducing waste and saving you money. The DCP-9015CDW complies with the strict ENERGY STAR environmental standards and ensures low energy consumption, low noise levels and a recycle-friendly design.

General

| | |
|----------------------------|---|
| Technology | Electrophotographic LED Printer |
| Processor | 333MHz |
| Memory | 192MB |
| Local Interface | Hi-Speed USB 2.0 |
| Wireless Network Interface | IEEE 802.11b/g/n |
| Display | 9.3cm colour touchscreen |
| Mobile Connectivity | Brother iPrint&Scan app, AirPrint, Mopria, Google Cloud Print™ & Wi-Fi Direct™ |
| Web Connect | Print from and scan to Box, Dropbox, Evernote®, Facebook, Flickr®, Google Drive™, Picasa™ & OneDrive® |
| Easy Wireless Setup | Wi-Fi Protected Setup™ (WPS) & AirStation OneTouch Secure System™ (AOSS) |



Automatic 2-Sided Colour Printer

| | |
|-----------------------------|---|
| Print Speed (A4) | Up to 18ppm (pages per minute) colour & mono |
| 2-Sided Print Speed (A4) | Up to 7ipm (images per minute) colour & mono |
| Resolution | 2,400dpi (2,400 x 600dpi²), 600 x 600dpi |
| Print Languages | PCL6, BR-Script3 (PostScript®3™ Language Emulation) |
| FPOT (First Print Out Time) | Less than 16 seconds colour & mono from ready mode |
| Warm Up Time | Less than 24 seconds from sleep mode |

Colour Copier

| | |
|-------------------------------|---|
| Speed (A4) | Up to 18cpm (copies per minute) colour & mono |
| Resolution | 600 x 600dpi |
| Multi copy | Makes up to 99 copies of each page (stacks or sorts) |
| Enlargement / Reduction Ratio | Reduce & enlarge documents from 25% to 400% using 1% increments |

Colour Scanner

| | |
|---------------------|--|
| Resolution | Up to 1,200 x 2,400dpi, 19,200 x 19,200dpi (enhanced) |
| Grey Scale | 256 shades of grey |
| Colour Depth | 48bit internal / 24bit external colour scanner |
| Pull Scan Functions | Scan to email, OCR, image, file & searchable PDF (requires bundled software) |
| Push Scan Functions | Scan to network folder¹ & FTP |
| Drivers | TWAIN, WIA, ICA & SANE² |



Paper Handling

| | |
|---------------------------|--|
| Paper Input | 250 sheet standard paper tray 1 sheet manual feed slot |
| Paper Output | 100 sheets face down, 1 sheet face up (straight paper path) |
| Media Type | Standard Tray - Plain & recycled paper (between 60 - 105g/m²) Manual Feed Slot - Plain, recycled, glossy & bond paper (between 60 - 163g/m²) |
| Media size | Standard Tray - A4, Letter, B5 (JIS), A5, A5 (Long Edge), A6, Executive, Legal, Folio (A4 only supported in automatic 2-sided print mode) Manual Feed Slot - Width: 76.2mm to 215.9mm x Length: 116mm to 355.6mm |
| Envelope & Label Printing | Yes, from manual feed slot (accuracy & reliability will depend on the quality & type of media used) |

Supported Operating Systems

| | |
|-----------------|---|
| Windows® | Windows 8® (32 & 64 bit editions), Windows 7® (32 & 64 bit editions), Windows Vista® (32 & 64 bit editions), Windows® XP Professional (32 & 64 bit editions), Windows® XP Home Edition, Windows® Server 2012, Windows® Server 2008 R2, Windows® Server 2008 (32 & 64 bit editions), Windows® Server 2003 (32 & 64 bit editions), Windows® Server supports printing only |
| Macintosh Linux | Mac OS X 10.6.8, 10.7.x, 10.8.x, 10.9.x, 10.10.x CUPS, LPD/LPRng (x86/x64 environment) |

Windows Printer Driver Functions

| | |
|---------------------|---|
| N-up Printing | Reduce up to 2, 4, 9, 16 or 25 A4 pages into just one A4 page (also supported by Mac) |
| Poster Printing | Enlarge 1 A4 page into a poster using 4, 9, 16 or 25 A4 pages |
| Watermark Printing | Add predefined text to your documents as a watermark |
| ID Printing | Add identification to your printed documents |
| Booklet Printing | Print documents in A5 booklet format |
| Skip Blank Page | Ignores any blank pages in your documents |
| Print Text in Black | Converts all text in your documents to black when printed |

Supplies

| | |
|--------------------------|---|
| Inbox Toners | 1,000 pages¹ |
| Standard Toners | TN-241BK - 2,500 pages¹ TN-241C/M/Y - 1,400 pages¹ |
| High Yield Colour Toners | TN-245C/M/Y - 2,200 pages¹ |
| Drum | DR-241CL - 15,000 A4 pages |
| Belt | BU-220CL - Up to 50,000 pages |
| Waste Toner Box | WT-220CL - Up to 50,000 pages |



Weights & Dimensions

| | |
|----------------|------------------------------------|
| With Carton | 602(W) x 534(D) x 565(H) mm 26.4kg |
| Without Carton | 410(W) x 483(D) x 367(H) mm 21.9kg |

Environment

| | |
|-------------------|---|
| TEC Value | 1.2kWh / week |
| Power Consumption | 380W active, 70W ready, 7W sleep, 1.4W deep sleep, 0.05W power down |
| Sound Pressure | 53dBA active, 33dBA ready |
| Sound Power | 6.42B active, 4.38B ready |
| Power Save | Consume less energy when not in use |
| Toner Save | Reduces toner usage |

Duty Cycle

| | |
|----------------------------------|--------------------|
| Recommended Monthly Print Volume | 300 to 1,500 pages |
| Maximum Monthly Volume⁵ | Up to 30,000 pages |



¹ Approx. declared yield value in accordance with ISO/IEC19798

² Vertical x horizontal

³ Optional free download from the Brother Solutions Centre <http://solutions.brother.com>

⁴ Windows® only

⁵ Maximum number of printed pages per month and can be used to compare designed durability between like for like Brother products.

For maximum printer life, it is best to choose a printer with a duty cycle that far exceeds your print requirements

brother
at your side

Brother UK Ltd

Shepley Street, Audenshaw, Manchester M34 5JD

Tel: +44(0)333 777 4444 Fax: +44(0)161 931 2218

Website: www.brother.co.uk

All specifications correct at time of printing. Brother is a registered trademark of Brother Industries Ltd. Brand product names are registered trademarks or trademarks of their respective companies.