

## FAX-2840 Environmentally Friendly Printing

Our commitment to the environment is brought to life with a range of eco friendly features and the attainment of a range of environmental labels and awards:

- **Separate Toner & Drum:** Less wastage and reduced print costs.
- **Toner Save:** The Eco feature uses less toner, which can help you to reduce your print spend.
- **N-in-1:** Reduce paper consumption by up to 75% by copying multiple pages onto a single sheet of paper.
- **Sleep Mode:** Consumes only 1.5 watts of power when not in use, which is over 36 times less energy than in the standard ready mode.



### GENERAL

|                        |  |
|------------------------|--|
| Technology             | Electrophotographic monochrome laser printer |
| Laser Notice Processor | Class 1 Laser Product (IEC 60825-1:2007)     |
| Memory                 | ARM9 200MHz                                  |
| Display                | 16MB<br>2 lines x 16 characters              |

### MONO FAX

|                             |   |
|-----------------------------|---|
| Modem Speed                 | 33.6Kbps (Super G3)   |
| One Touch Dials             | 22 (11 x 2)   |
| Speed Dials                 | 200   |
| Group Dials                 | 8   |
| Distinctive Ring Detection  | Ability to detect different ring styles (UK & Denmark only) |
| Fax Forward & Retrieval     | Forward or retrieve faxes to or from another location       |
| Transmit / Receive Memory   | Up to 400 pages <sup>3</sup>                                |
| Error Correction Mode (ECM) | Resending of failed documents where sending fax shares ECM  |

### MONO COPIER

|                               |  |
|-------------------------------|--|
| Copy Speed A4                 | Up to 20cpm (copies per minute)                                  |
| Resolution                    | 300 x 600 dpi  |
| First Copy Out Time           | Less than 12 seconds (from ready mode)                           |
| Multi-Copying / Stack / Sort  | Makes up to 99 copies of each page (stacks or sorts)             |
| Reduction / Enlargement Ratio | Reduce & enlarge documents from 25% to 400% using 1% increments  |
| N in 1 Copying                | Allows the user to compress 2 or 4 pages on to a single A4 sheet |

### PAPER HANDLING

|              |  |
|--------------|--|
| Paper Input  | 250 sheet standard paper tray<br>1 sheet manual paper feed slot<br>30 sheet Automatic Document Feeder (ADF) <sup>4</sup> |
| Paper Output | 100 sheets face down<br>1 sheet face up (straight paper path)  |

### MEDIA SPECIFICATIONS

|                     |  |
|---------------------|--|
| Media Types & Sizes | Standard Tray - Plain & recycled paper (between 60 - 105 g/m <sup>2</sup> )<br>Manual Paper Feed Slot - Plain, recycled & bond paper (between 60 - 163g/m <sup>2</sup> )<br>ADF (Automatic Document Feeder) - Plain paper & recycled paper (between 64 - 90 g/m <sup>2</sup> ) |
| Media Weights       | Standard Tray - A4, Letter, B5(SO/JIS), A5, A5(Long Edge), B6(ISO), A6, Executive<br>Manual Paper Feed Slot - Width: 76.2mm to 216mm x Length: 116mm to 406.4mm<br>ADF (Automatic Document Feeder) - Width: 147.3mm to 215.9mm x Length: 147.3mm to 355.6mm                    |

### SUPPLIES

|                  |   |
|------------------|---|
| Inbox Toner      | Approx. 1,000 pages <sup>1</sup>                  |
| Standard Toner   | TN-2210 - Approx. 1,200 pages <sup>1</sup>        |
| High Yield Toner | TN-2220 - Approx. 2,600 pages <sup>1</sup>        |
| Drum             | DR-2200 - Approx. 12,000 pages (one job per page) |



### WEIGHTS & DIMENSIONS

|                |                             |
|----------------|-----------------------------|
| With Carton    | 476 x 458 x 436 mm / 12.7kg |
| Without Carton | 368 x 360 x 311 mm / 8.8kg  |

### ENVIRONMENT

|                                |   |
|--------------------------------|---|
| Typical Electrical Consumption | 0.8 kWh / Week                          |
| Power Consumption              | 360W active, 55W ready, 1.5W deep sleep |
| Sound Pressure                 | 53dBA active, 30dBA ready               |
| Sound Power                    | 6.18B active, 4.25B ready               |
| Power Save                     | Consume less energy when not in use     |
| Toner Save                     | Reduces toner usage                     |



### DUTY CYCLE

|                                  |                           |
|----------------------------------|---------------------------|
| Recommended Monthly Print Volume | 250 to 2,000 pages        |
| Maximum Monthly Volume           | 10,000 pages <sup>2</sup> |

<sup>1</sup>Declared yield value in accordance with ISO/IEC19752

<sup>2</sup>Maximum number of printed pages per month and can be used to compare designed durability between like Brother products. For maximum printer life, it is best to choose a printer with a duty cycle that far exceeds your print requirements

<sup>3</sup>Based on the ITU-T Test Cart, Standard Resolution, JBIG

<sup>4</sup>Maximum capacity based on using 80g/m<sup>2</sup> paper

# FAX-2840

brother  
at your side

# HIGH SPEED COMMUNICATION

## FOR YOUR OFFICE



Contact:

brother at your side



Brother UK Ltd, Audenshaw, Manchester M34 5JD  
Tel:+44(0)8444 999 444 Fax:+44(0)161 931 2218  
Web: www.brother.co.uk

All specifications correct at time of printing. Brother is a registered trademark of Brother Industries Ltd. Brand product names are registered trademarks or trademarks of their respective companies.

THE BROTHER FAX-2840 HAS THE FEATURES & TECHNOLOGY TO HELP YOU WORK MORE EFFICIENTLY



Features to optimise your workflow

- High speed Super G3 fax
- 2 line LCD
- 22 One-Touch Dials
- 400 page memory transmission<sup>3</sup>
- 30 sheet Automatic Document Feeder<sup>4</sup>
- 250 sheet lower paper tray
- High speed copy at up to 20cpm
- 1,000 page toner cartridge included<sup>1</sup>

## TAKE THE HASSLE OUT OF FAXING

Whatever your purpose, the Brother FAX-2840 has the features and technology to help you work more efficiently. The compact stylish design delivers professional performance with enhanced capabilities such as N-in-1-copy, which improves productivity and reduces paper costs.

### PRODUCTIVE

Equipped with 22 One-Touch Dials and a copy speed of up to 20cpm the most demanding document handling requirements are dealt with. An intuitive control panel with dedicated function keys enables users to get the results they need quickly and easily.

### VERSATILE

With fax and copy functionality, the FAX-2840 offers flexibility and lets you work hassle free. A range of innovative features ensure that your office has the necessary functionality needed to thrive in the modern world of business.

### FLEXIBLE

The standard 250 sheet lower tray offers flexibility and gives you greater paper capacity, allowing more copying time before paper replenishment is needed. A range of multipage documents can be faxed or copied using the 30<sup>+</sup> page automatic document feeder saving time and resource.



### RELIABLE

If the machine is out of paper, up to 400<sup>+</sup> pages can be stored in the fax memory ensuring important information is recovered when the paper is replenished.

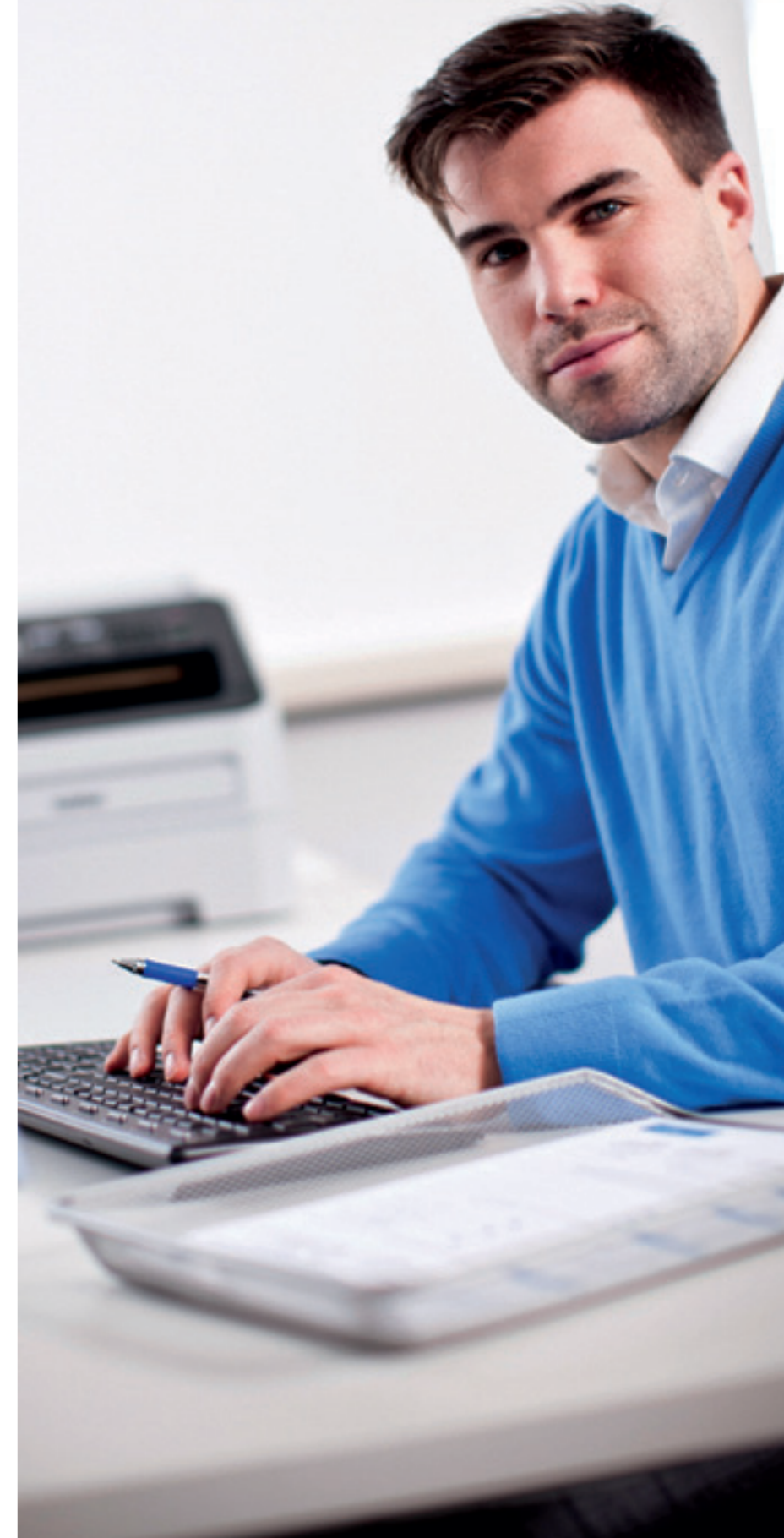
### COST EFFECTIVE

A range of cost effective supplies to meet the demands of your office are available. The optional high yield toner cartridge together with the separate drum unit means you can be sure of exceedingly low running costs.

### COMPACT

With office space at a premium the smart robust, compact design of the Brother FAX-2840 is designed to fit in, making it work in even the smallest of spaces.

“Productive and reliable, the Brother **FAX-2840** is the dependable high speed office communication partner”



## IMPROVE PRODUCTIVITY WITH ADVANCED FAX FEATURES

The Brother Fax-2840 is designed to deliver fast and efficient fax communication.



The controls include 22 One-Touch Dials and 200 Speed Dials this ensures the most demanding document handling requirements are dealt with.



When you need to send documents to multiple locations you can use the Brother FAX 2840 to store up to 214 contacts, in up to 8 separate groups or lists for group dialling.



A 33.6Kbps modem speed makes for fast fax communication and enhanced efficiency. Combining this with 16MB of memory means that you can store up to 400<sup>+</sup> pages of information.

