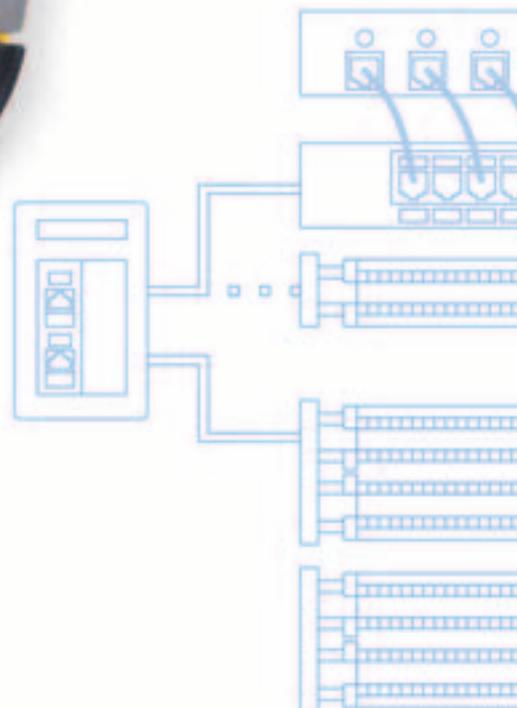
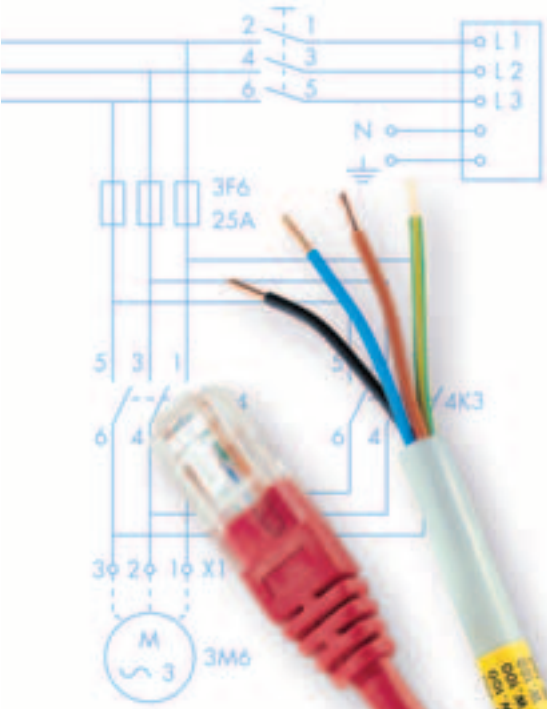


DYMO[®]

Label your work

ILP 219

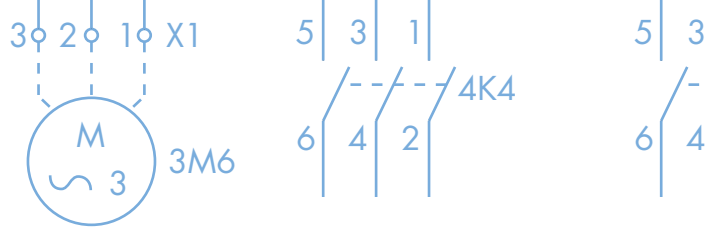
NEW



ILP 219, **the industrial label printer**

NEW RANGE OF INDUSTRIAL LABELS

DYMO



Applications

Any applications you have

DYMO has developed together with the end user the first real industrial hand-held printer. If you are now working on Electrical or Tele- Datacommunication applications, the DYMO ILP219 is the right tool for you. You can now label all what is needed in the field.



More electrical applications

- **Terminal Block Marking**

In this mode you just enter the size of the Terminal Block and the printer will print your data in line with the defined width of the blocks.

- **Component Marking**

Define the space you have available and you will print a label that fits exactly in that area.

- **Module Marking**

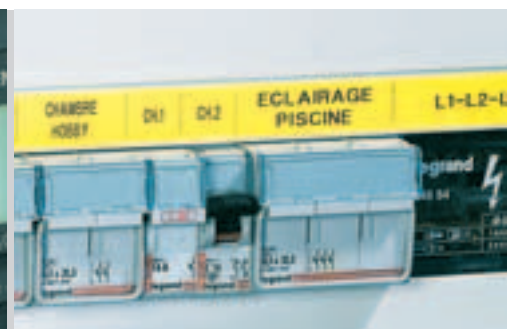
This special mode allows you to create one label that will fit exactly with the total amount of installed moduleblocks in one row of a rack.



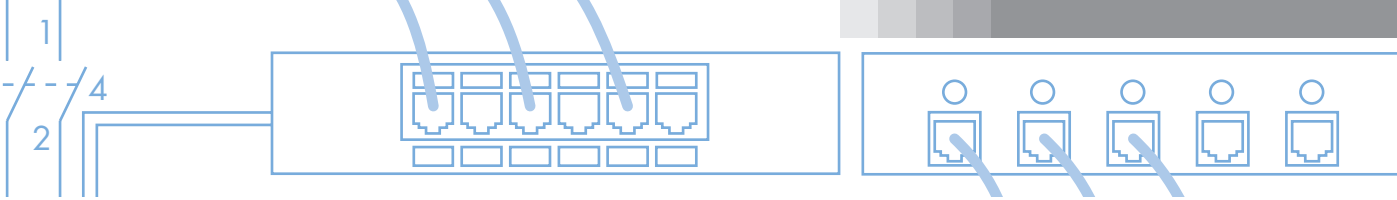
Any manufacturer brand of terminal blocks can now be marked fast with one long label.



Print a label fit-to-size.



Customize your installation material fast and easy without having to use your scissors.



DYMO MAKES YOUR JOB EASIER

Wire & Cable Marking

This is the first printer that works the same way as yourself. You enter the diameter and the text, the ILP will automatically calculate the circumference of your cable and will print a made-to-measure cable marker.

2 options are implemented to mark the wires or cables:

- **Wrapping**

Your entered text is automatically repeated over the full length of the wire marker (diameter controlled). Your text can be read from any angle once applied.

- **Flagging**

Your text is automatically repeated twice so you can see the result on the flag from any angle.

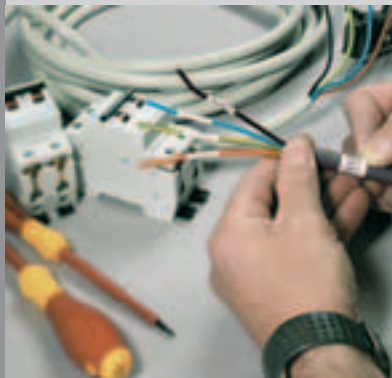
More Datacom Applications

- **Patchpanel Marking**

Enter the step between your connection points and the ILP219 will print 1 label with all your data exactly in the middle of each connection with a precision of 0.1mm.

- **Outlet Marking**

Mark every outlet clearly at the right size.



Create a wrap-around marker.



Create in no-time a Flag label of your choice.



Label each part individually or with one long label.



Any type of outlet ... any type of label of your choice at the right size.

New range of labels that stick!

General marking & Rating plates

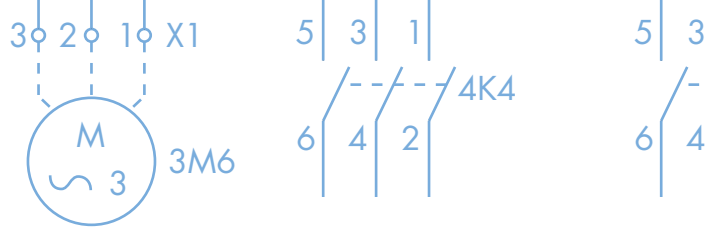
- What ever you want to mark it is now possible. Use logo's, barcodes or text to make it even more clear.



Label your equipment & tools with barcodes and tracking becomes easier.



Increase the visibility of critical information by using graphics and symbols.



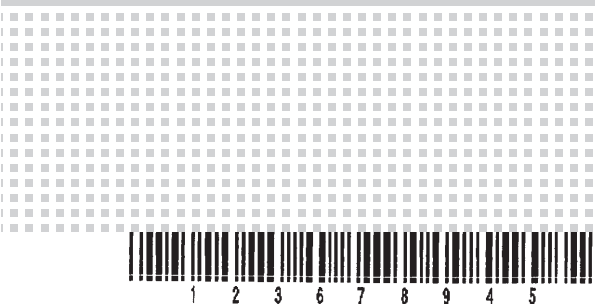
DYMO®

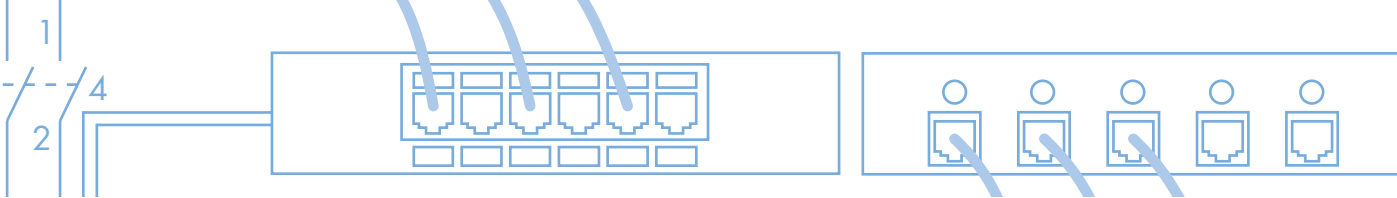


Product

Superb printing quality

Equipped with a thermal transfer printhead the ILP 219 gives you no smear and clearly legible and durable labels that are needed in an industrial environment. It will make your job faster, easier and will give added value to your work.



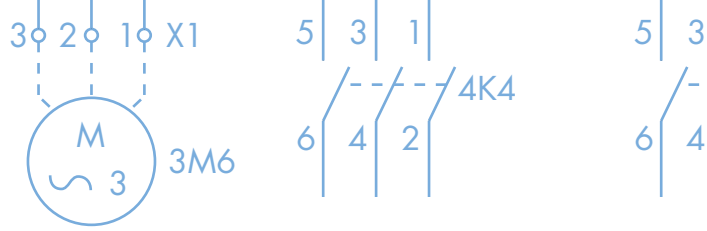


DYMO MAKES YOUR JOB EASIER



**Labels
that last !**

- Multiple line printing**
 - Up to 4 lines
- Many Different Formats**
 - 12 Font sizes • 5 Text styles (normal/italic/-shadow/outline/mirror) • Vertical printing
 - Underline & Box option
- Computer connection**
 - Serial port to connect your computer with your printer
- Large illuminated display**
 - With functional setting & battery life indications
- Temperature setting**
 - Printing can be adjusted on different materials
- Printing options**
 - (see for more details on the next pages) • Normal print mode • Multiple copies • Serialisation (incremental printing) • Printing files from memory card • Selection of data from memory card
- Easy accessible selection key**
- Barcodes**
 - Most common used barcodes implemented Code 39/Code 128/EAN 8/EAN 13/UPC A/ UPC E
- Mode key**
 - Makes the tool specific for the applications described on the previous pages.
- International**
 - 16 Languages supported in the printer • Special language related characters – using RACE principle, as in mobile phone
- Pre programmable keys**
 - Makes your life easy – program the keys with what YOU use mostly
- Graphic solutions**
 - Print any self made logo or symbol using the card selection
- Many Symbols implemented**
 - A list of most common electrical and datacom symbols is available for direct use.
- Clearly marked numerical keys**
- All Characters layed out together**
 ABC based keyboard
- Memory Card**
 Storage solution for Data and Graphics



DYMO®



Connection

The Software

The hardware

The DYMO ILP 219 Card Loader Software provides an easy method for creating sets of labels and graphics which can then be downloaded to the memorycard.

Software



Automate your work and use the software to import & download data onto the memory card.

32 files and 32 graphics can be saved onto one memory card.





DYMO MAKES YOUR JOB EASIER

PC Connection



Before sending your installers into the field, download all the data from a CAD drawing onto the memory card.



Select the different printing options from the menu which you can find under the PRINT key.

Printing options



Personalize your label with company logo or any other graphic.

PC Connection

The ILP219 has a serial port that can be used to transfer data and graphics to the memory card. On one single memory card you can add up to 32 files and 32 graphics (BMP, JPG, PCX, PNG, TIF, WMF, EMF).

Printing options

The ILP219 allows you to select any of the following options before printing:

- Print the label prepared on the display
- Create Multiple copies of the label on the display
- Make Serialised labels
- Start a Print job with data from the memory card
- Make a selection of the data on the card and print what is needed
- Print any graphics you have listed on the memory card

Software

The ILP219 comes with a CD-ROM containing the software to allow you to communicate with the printer. Create a file with all data (names / numbers / barcodes / logo's / symbols / etc.) and download this in one go to the memorycard in the printer. A great feature of the software is ASCII importation allowing you to collect data from CAD systems such as EPLAN™, IGE-XAO™, etc.

Technical specifications

Printing method

Thermal Transfer Printing (180 dpi)

Physical Characteristics

Dimensions (excl. protective bumper)

- Length: 70 mm
- Width: 114 mm
- Height: 212 mm
- Weight: 519 g

Keyboard

- Data Entry: **Rapid Accented Character Entry**; mobile phone principle.
- Layout: ABC

Extra Protective Bumper

LCD Display

- 2 Lines
- Battery Life indication
- Backlighting

Cutter

Power Management

6 AA batteries (not included)

230V adapter

Rechargeable Battery Pack (not included – optional)

Automatic Power Off (after 2 minutes)


Operating characteristics

Operating conditions: T°: 4°C – 40 °C H: 10%-90% RH

Storage conditions: T°: 0°C – 90 °C H: 10%-90% RH

CE approved

Tapes

 Cassette Type: ID1 (tape and carbon all in one)

Easy Loading

Sizes: 6/9/12/19 mm tape

Standard product offering

The ILP219 kit contains:

- Carrying Case
- Printer & protective bumper
- PC connection Cable
- Memory Card
- 2 Tapes
- AC adapter
- Manual (GB-G-F-E-I-NL-PL-PT)
- Card loader Software (GB-G-F-E-I-NL-PL-PT)
- Quick Start Card (GB-G-F-E-I-NL-PL-PT)

Options:

Rechargeable Battery Pack ●

- Can print up to 11 cassettes of 7meter

Extra Memory Card (64K) ●

- Save up to 32 files & 32 graphics

More questions? Just give us a call.

Phone Numbers – Call Center

Country	Acct number	Local route
Austria	(+43)	0 15 99 14 20 12
Belgium	(+42)	0 2713 38 08
Czech	(+420)	2 61 91 27 20
Denmark	(+45)	35 25 65 08
Finland	(+358)	09 2 29 07 04
France	(+33)	01 69 32 49 32
Germany	(+49)	0 69 66 56 85 29
Hungary	(+36)	14 24 66 00
Italy	(+49)	02 45 28 13 08
Norway	(+47)	22 97 17 10
Netherlands	(+31)	02 05 81 93 86
Poland	(+48)	22 874 30 50
Portugal	(+34)	9 16 62 31 49
Slovakia	(+420)	2 61 91 27 20
Spain	(+43)	9 16 62 31 49
Sweden	(+46)	0 86 32 00 57
Switzerland (German)	(+41)	0 13 42 04 66
United Kingdom	(+44)	020 7341 5529

Fax number (+31) 02 05 81 93 80



ESSELTE N.V.
Industriepark-Noord 30 - 9100 Sint-Niklaas – Belgium



InfoIndustrial@esselte.com
www.dymoindustrial.com