



The benefits



Pays off after 22 hours usage*



The post gets to the addressee faster



Minimum space required

*Estimation in comparison to opening letters by hand

Automatic Desktop Letter Opener Martin Yale 1616

With the desktop letter opener Martin Yale 1616, the letters are fed by hand and opened automatically.

The Martin Yale 1616 is recommended for boxes with more than 50 letters per day.

Areas of application:

- Mobile workplaces
- Secretariats
- Home offices
- Small offices
- Chambers
- Tax consultants
- Handicraft businesses



Special features

- Safe finger protection with totally protected blades
- Low sound level

Important performance data

Envelope formats	All
Envelope thickness up to	3.2 mm
Feeding	Manual

Other technical data

Dimensions W x D x H	17 x 10 x 25 cm
Weight	1.3 kg



Issue 01/2006

Product Range Letter Opener

Issue 1/2006



Quality Office and Graphics Products



Model Martin Yale

Manual Letter Openers



1624



1616

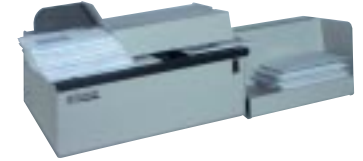
Automatic Letter Openers



1632



1648



62001

		1624	1616	1632	1648	62001	
Performance characteristics	Application area	Envelopes / day	from 1	1 - 30	30 - 500	> 100	> 500
	Capacity	Envelopes / min.	Operator dependent	Operator dependent	110	200	290
	Thickness of envelopes	up to mm	2.5	3.2	6.4	5	6
	Height of envelope stacks	up to cm	Only single envelope	Only single envelope	4.4	7.6	15.4
	Automatic feed		–	–	X	X	X
Special characteristics	Adjustable cut width		–	–	–	–	X
	Opening method		cut	cut	cut	slit	cut
	Light barrier		–	–	–	X	–
	Receiving tray removable		–	–	–	X	X
	Low noise operation		X	X	X	X	X
Technical Data	Cut width	mm	3.3	2.3	2.4	–	2.4-5
	Dimensions in use	W x D x H approx. cm	14 x 5 x 6	25 x 18 x 10	35 x 27 x 14	80 x 28 x 29	90 x 26 x 30
	Weight	approx. kg	0.2	1.3	2.6	10	19