

# The benefits



**Pays off after  
8 hours usage\***



**The post gets to the  
addressee faster**



**Saves time  
and money**

\*Estimation in comparison to opening letters  
by hand

## Automatic Desktop Letter Opener Martin Yale 1632

With the automatic desktop letter opener Martin Yale 1632, the letters will be automatically fed and opened. The high hourly output means the incoming mail gets to the addressee quickly and cheaply.

The machine requires little space and has a low sound level.

The Martin Yale 1632 is recommended for boxes with more than 30 letters per day.

### Can be used in:

- Offices and mailrooms  
in medium-sized and large companies

The cutting process is suitable for incoming mail consisting of many different thickness' and many differently filled envelopes.



Safe finger protection with totally protected blades.



Strong envelopes and high stacks of envelopes can be accepted without pre-sorting.

Automatic feeding via transfer belt and automatic on/off control via light barrier.



**MARTIN YALE**  
International

Quality Office and Graphics Products



P.O. Box 14 20, 88672 Markdorf/Germany  
Phone +49 (0) 75 44 / 60-0, Fax +49 (0) 75 44 / 60-248  
vertrieb@martinyale.de, www.martinyale.de

# Automatic Desktop-Opener Martin Yale 1632



## Special features

- Strong envelopes and high stacks of envelopes can be accepted without pre-sorting
- Low sound level
- Safe finger protection with totally protected blades
- Automatic switch-off after completion

## Important performance data

Capacity	110 envelopes / min.
Envelope formats	125 x 235 mm (C 6, B 6, E 6, Long, C 6/5)
Envelope thickness up to	6.4 mm
Stacking height up to	4.4 cm
Feeding	Automatic

## Other technical data

Dimensions W x D x H	35 x 27 x 14 cm
Weight	2,6 kg

Issue 01/2006

# Product Range Letter Opener

Issue 1/2006



Quality Office and Graphics Products



Model Martin Yale

## Manual Letter Openers



1624



1616

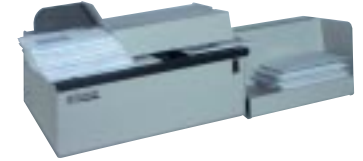
## Automatic Letter Openers



1632



1648



62001

		1624	1616	1632	1648	62001	
<b>Performance characteristics</b>	Application area	Envelopes / day	from 1	1 - 30	30 - 500	> 100	> 500
	Capacity	Envelopes / min.	Operator dependent	Operator dependent	110	200	290
	Thickness of envelopes	up to mm	2.5	3.2	6.4	5	6
	Height of envelope stacks	up to cm	Only single envelope	Only single envelope	4.4	7.6	15.4
	Automatic feed		–	–	X	X	X
<b>Special characteristics</b>	Adjustable cut width		–	–	–	–	X
	Opening method		cut	cut	cut	slit	cut
	Light barrier		–	–	–	X	–
	Receiving tray removable		–	–	–	X	X
	Low noise operation		X	X	X	X	X
<b>Technical Data</b>	Cut width	mm	3.3	2.3	2.4	–	2.4-5
	Dimensions in use	W x D x H approx. cm	14 x 5 x 6	25 x 18 x 10	35 x 27 x 14	80 x 28 x 29	90 x 26 x 30
	Weight	approx. kg	0.2	1.3	2.6	10	19