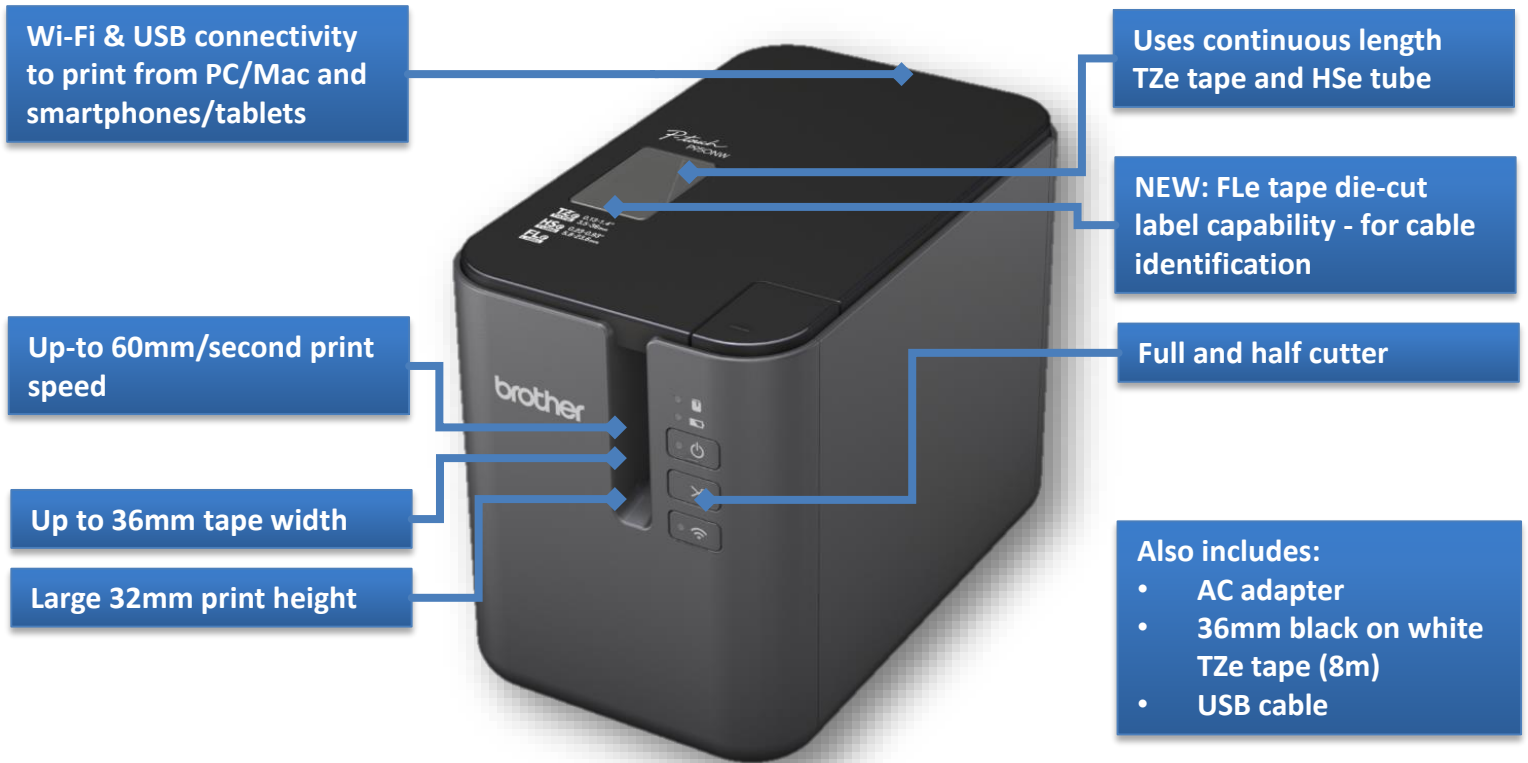


The professional PC connectable desktop labelling machine with Wi-Fi connectivity



Other features:

P-touch template printing mode

- Design labels on your PC, and upload to any of the label printer's 99 memory locations.
- Then simply send text commands along with your text or barcode data from your own software.
- The printer will then merge this onto your label design and print the label.

Powerful label editing/printing software

- Supplied with P-touch Editor label design software.
- Add logos and other specialist symbols.
- Includes industry standard 1D and 2D barcode protocols.
- Merge and print data from Excel, .csv, .txt, Access databases, and MSDE/SQL servers to print large batches of labels at once.

Prints die-cut labels

- Prints FLe die-cut labels (non-laminated)
- Used for new type of cable flag label.

Rechargeable Battery Option

- Optional battery base and Li-ion battery allows for fully portable use.
- Ideal for when printing wirelessly from a tablet, and the label printer is placed on a movable trolley.
- Electricians and datacom users now have a professional printer for use with the Brother Cable Label Tool App, that can be used wherever the labels need printing, even without access to an AC power source.
- Also adds back-up power in case of a cut in the electricity supply.

PT-P900W SPECIFICATIONS

brother
at your side

General

Carton contents	PT-P900W labelling machine 36mm TZe black on white tape cassette (8m) AC adapter USB cable Documentation
Language support	English, German, French, Dutch, Italian, Spanish, Portuguese, Danish, Norwegian, Swedish, Finnish, Hungarian, Czech, Polish, Romanian, Slovenian, Slovakian, Croatian, Brazilian Portuguese, Turkish

Dimensions & Weights

Without carton	118 (w) x 192 (d) x 146 (h) 1.48kg
With carton	165 (w) x 266 (d) x 333 (h) 2.74 kg
Master carton	282 (w) x 509 (d) x 355 (h) † 3 per master carton 8.75 kg

Connectivity

USB Interface	Windows®(USB1.1, 2.0, 3.0 protocol) Mac (USB 1.0, 2.0 protocol)
Wi-Fi	Wireless Direct: IEEE802.11n Ad-Hoc mode: IEEE802.11b Infrastructure mode: IEEE802.11b/g/n WPS 2.0
Serial	RS-232C (for printing with ESC/P commands only. Requires optional serial adapter cable)
Bluetooth	No
Operating system support	Windows, Mac, iOS, Android

Printing

Printer Emulations	P-touch Raster ESC/P P-touch Template
Printing speed	Up to 60mm/second
Print resolution	360dpi
Maximum tape width	36.0mm
Maximum print height	32.0mm
Cutter type	Automatic full and half-cut
Label length	4 mm minimum 1000 mm maximum
Maximum lines per label	17
Vertical text printing	Yes
Mirror printing	Yes
Copies	1 to 999
Numbering	1 to 999

Barcode Protocols

Supported	CODE39 , ITF (I-2/5), EAN-13, EAN-8, UPC-A, UPC-E, CODABAR ,CODE128, GS1-128 (UCC/EAN-128), QR Code, PDF417, Data Matrix, MaxiCode RSS-14(Standard, Truncated, Stacked, Stacked Omni), RSS-Limited, RSS Expanded(Standard, Stacked), POSTNET, Aztec, MaxiCode
------------------	---

Software/App compatibility

P-touch Editor	PC/Mac
iPrint&Label App	iOS/Android
Cable Label Tool App	iOS/Android

Memory for label template transfer

Flash memory size	6MB
Memory locations	99 areas

Supplies

Tape types	TZe, HSe, FLe
Tape widths	TZe/HGe: 3.5, 6, 9, 12, 18, 24, 36mm HSe: 5.8, 8.8, 11.7, 17.7, 23.6 mm FLe: 21mm (width) x 45mm (length)

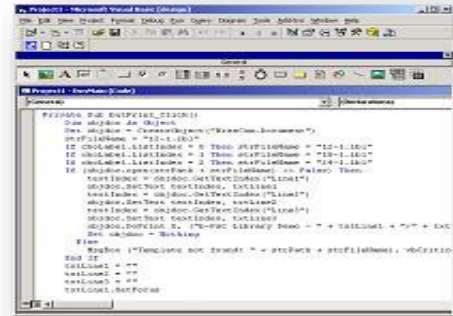
Optional Accessories

Li-ion battery	PA-BT-4000LI
Battery base	PA-BB-002
Serial adapter cable	PA-SCA-001
AC adaptor	AD9100ESA



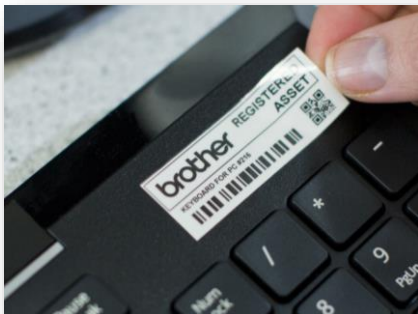
P-TOUCH EDITOR

P-touch Editor software is powerful but yet very easy to use. Make bar-code labels or other specialty labels one at a time or print multiple labels in a batch by linking to data contained in an Excel or csv/txt file.



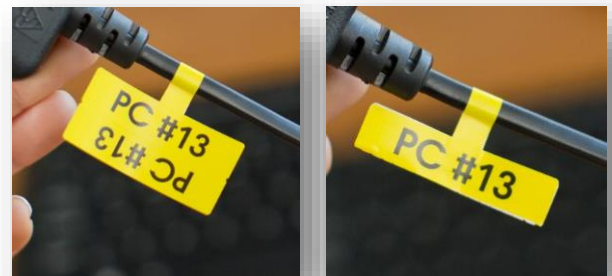
WINDOWS B-PAC SDK

Add the benefits of P-touch label printing directly from your own existing software, or create your own totally customised labelling applications. By using the b-PAC SDK, your labels can contain text, barcodes, images and logos.



TEMPLATE PRINTING

Design your label layout (template) in P-touch Editor, then upload to one of the 99 memory locations. Then issue simple commands from your own program or app to select the template needed, then send the text/barcode data. This merges on the label template, and the label prints.



NEW:FLe TAPE (available Jan '17)

The PT-P900W can print onto special die-cut labels, suitable for labelling cables.

Once applied, the FLe label measures 45mm x 21mm, and is available in white, yellow and green colours.

For more information visit <https://online.brother.co.uk/developer/labelling-solutions>



PA-BB-002

Battery base for PT-P900W and PT-P950NW. Allows printing anywhere, without an AC connection.

Battery can be easily recharged using the AC adapter supplied with the label printer.



PA-BT4000LI

High-capacity lithium-ion rechargeable battery for use in conjunction with the battery base.

Fits in the battery base, and is quick and easy to install.

